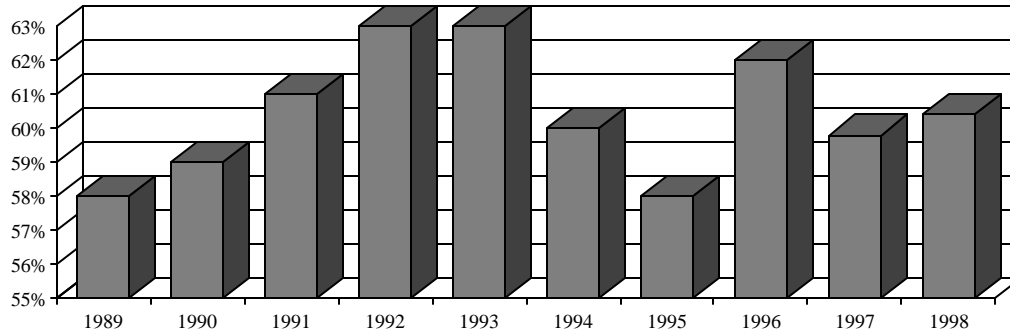


Tenure of Full-time Instructional Faculty* - Reynolda Campus, Fall 1998

Rank	Tenured		Tenure Track		Non-Tenure Track		Total		% Tenured	
	Male	Female	Male	Female	Male	Female	Male	Female	Male	Female
Professor	128	24	0	0	4	0	132	24	97%	100%
Associate	62	23	4	1	2	2	68	26	91%	88%
Assistant	0	0	42	33	13	15	55	48	0%	0%
Instructor	0	0	0	0	8	18	8	18	0%	0%
Lecturer	1	0	1	0	2	5	4	5	25%	0%
Other rank	0	0	0	0	3	3	3	3	0%	0%
Total	191	47	47	34	32	43	270	124	71%	38%

* Source: Office of Human Resources

Percentage of Full-time Instructional Faculty Tenured - Reynolda Campus, Fall 1989-1998



Highest Degree Earned for Full-Time Instructional Faculty, Fall 1998**

Degree	Male		Female		Total Faculty	
	#	%	#	%	#	%
Doctorate	212	91.8%	79	69.9%	291	84.6%
Masters	17	7.4%	29	25.7%	46	13.4%
Other	2	0.9%	5	4.4%	7	2.0%
Total	231		113		344	100%

**Arts and Sciences and the Calloway School of Business and Accountancy and all faculty: e.g., faculty on leave

