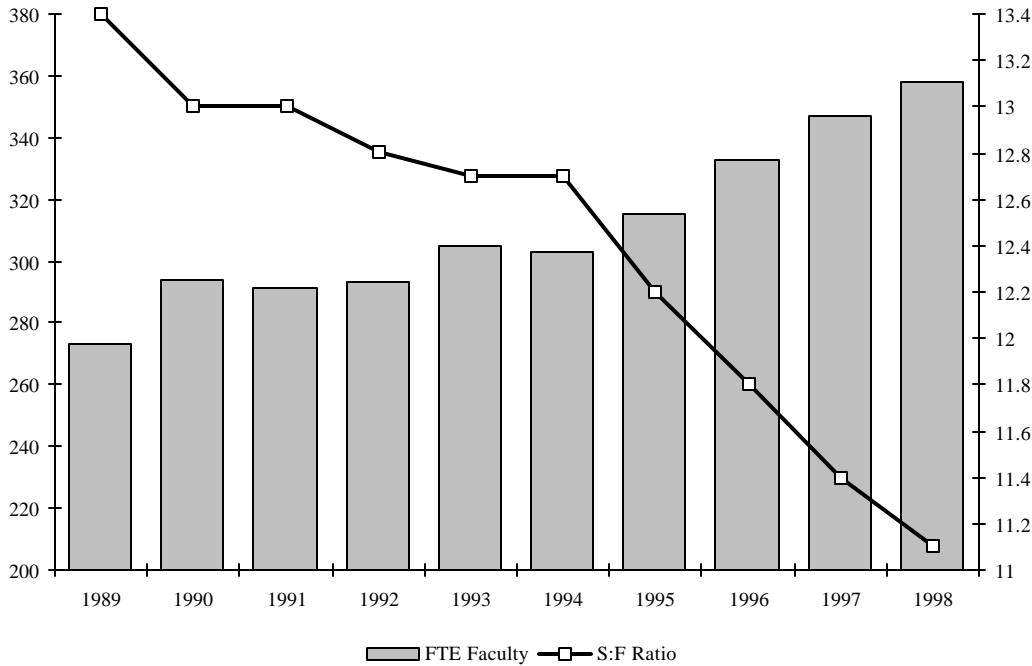


Teaching Equivalents and Student-to-Faculty Ratio*, Fall 1989 - 1998

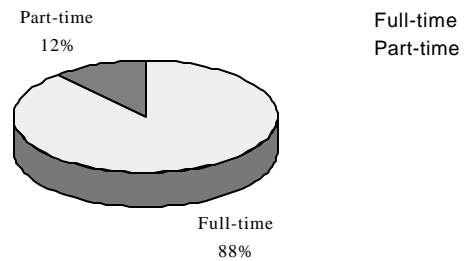
	1989	1990	1991	1992	1993	1994	1995	1996	1997	1998
Full-time Teaching Faculty	249	270	268	272	287	282	292	308	315	324
FTE	249	270	268	272	287	282	292	308	315	324
Part-time Teaching Faculty	51	59	42	41	36	36	35	39	58	44
FTE	21	22.5	18.67	16.33	13.5	17.25	17.42	19.22	26.15	30.25
Teaching Administrator	6	4	14	11	12	9	11	13	13	11
FTE	2.67	1.33	4.67	4.33	4.33	4	5.41	5.81	6.25	3.75
Total Faculty / FTE	306/273	333/294	324/291	324/293	335/305	327/303	338/315	360/333	386/347	379/358
Student-to-Faculty Ratio	13.4 to 1	13.0 to 1	13.0 to 1	12.8 to 1	12.7 to 1	12.7 to 1	12.2 to 1	11.8 to 1	11.4 to 1	11.1 to 1



Percentage of Part-time Faculty*, Fall 1994 - 1998

	1994	1995	1996	1997	1998
Total Number of Full-time Faculty and Teaching Admin.	290	303	321	328	335
Total Number of Part-time Faculty	36	35	39	58	44
Percentage of Part-time Faculty	11%	10%	11%	15%	12%

Faculty, Fall 1998



*Arts and Sciences and the Calloway School of Business and Accountant