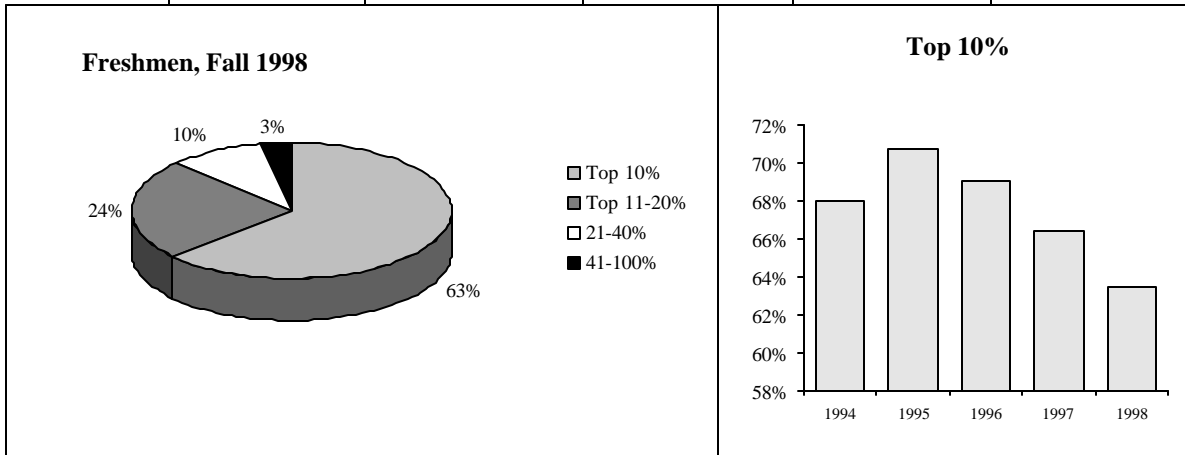
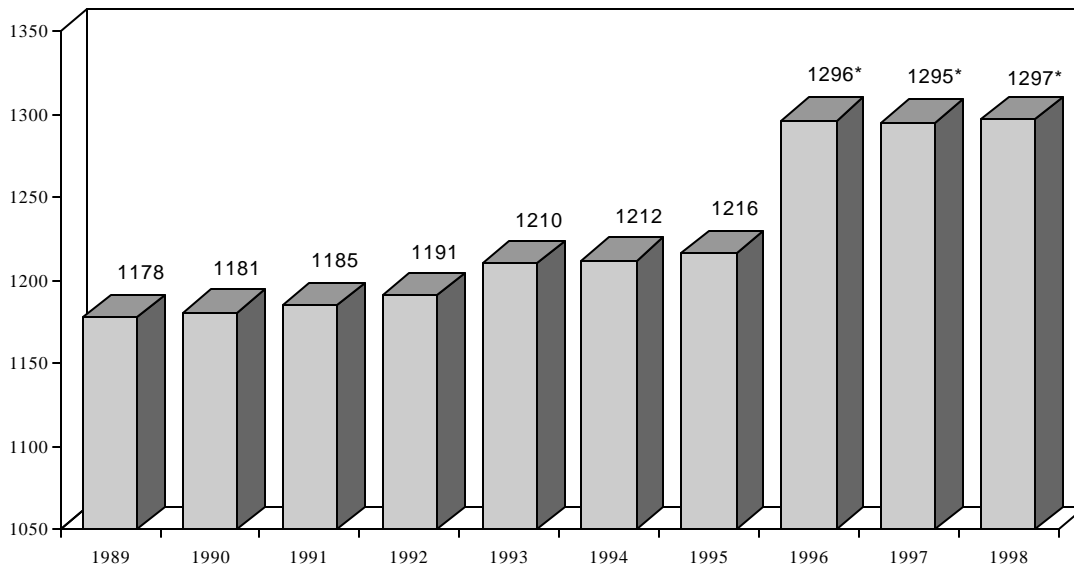


### High School Rank of Entering Freshmen, 1994 - 1998

Rank	1994		1995		1996		1997		1998	
	#	%	#	%	#	%	#	%	#	%
Top 10%	532	68.0%	548	70.7%	504	69.1%	497	66.4%	467	63.5%
11-20%	167	21.4%	134	17.3%	140	19.2%	156	20.9%	175	23.8%
21-40%	64	8.2%	72	9.3%	69	9.5%	67	9.0%	72	9.8%
41-60%	14	1.8%	16	2.1%	7	1.0%	22	2.9%	17	2.3%
61-80%	3	0.4%	3	0.4%	7	1.0%	6	0.8%	5	0.7%
81-100%	2	0.3%	2	0.3%	2	0.3%	0	0.0%	0	0.0%
Not Available	164		190		211		219		257	



### Average SAT Scores for Entering Freshmen, 1989 - 1998



\* "In April 1995, the College Board recentered the score scales for all tests in the SAT Program to reflect the contemporary test taking population. Recentering reestablished the average score for a study group of 1990 seniors at about 500--the midpoint of the 200 to 800 scale--allowing students, schools, and colleges to more easily interpret their scores in relation to those of a similar group of college-bound seniors."