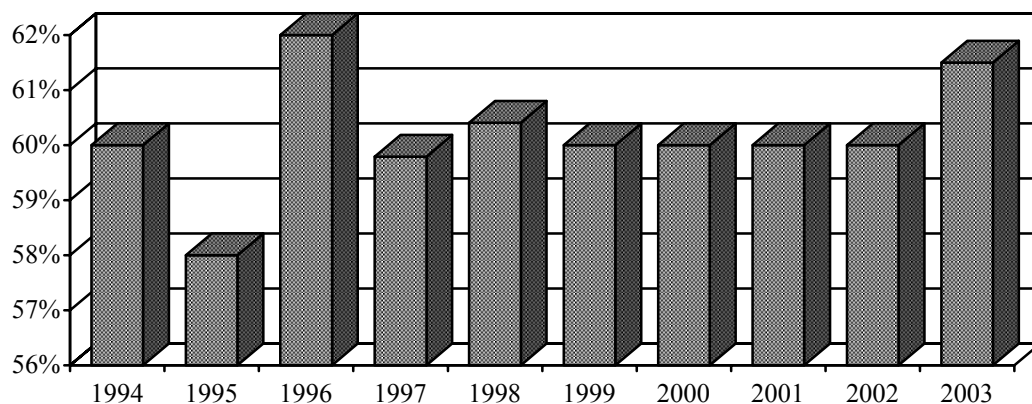


Tenure of Full-time Instructional Faculty - Reynolda Campus, Fall 2003

Rank	Tenured		Tenure Track		Non-Tenure Track		Total		% Tenured	
	Male	Female	Male	Female	Male	Female	Male	Female	Male	Female
Professor	123	34	0	0	5	1	128	35	96%	97%
Associate	72	37	5	0	1	0	78	37	92%	100%
Assistant	0	0	43	36	13	13	56	49	0%	0%
Instructor	0	0	1	1	10	13	11	14	0%	0%
Lecturer	1	0	0	0	7	7	8	7	13%	0%
Other rank	0	0	0	0	4	7	4	7	0%	0%
Total	196	71	49	37	40	41	285	149	69%	48%

Percentage of Full-time Instructional Faculty Tenured - Reynolda Campus, Fall 1994-2003



Highest Degree Earned for Full-Time Instructional Faculty*, Fall 2003

Degree	Male		Female		Total Faculty		
	#	%	#	%	#	%	
Doctorate	212	93.0%	108	84.4%	320	89.9%	*Arts and Sciences and the Calloway
Masters	13	5.7%	17	13.3%	30	8.4%	School of Business and Accountancy
Other	3	1.3%	3	2.3%	6	1.7%	
Total	228		128		356	100%	

