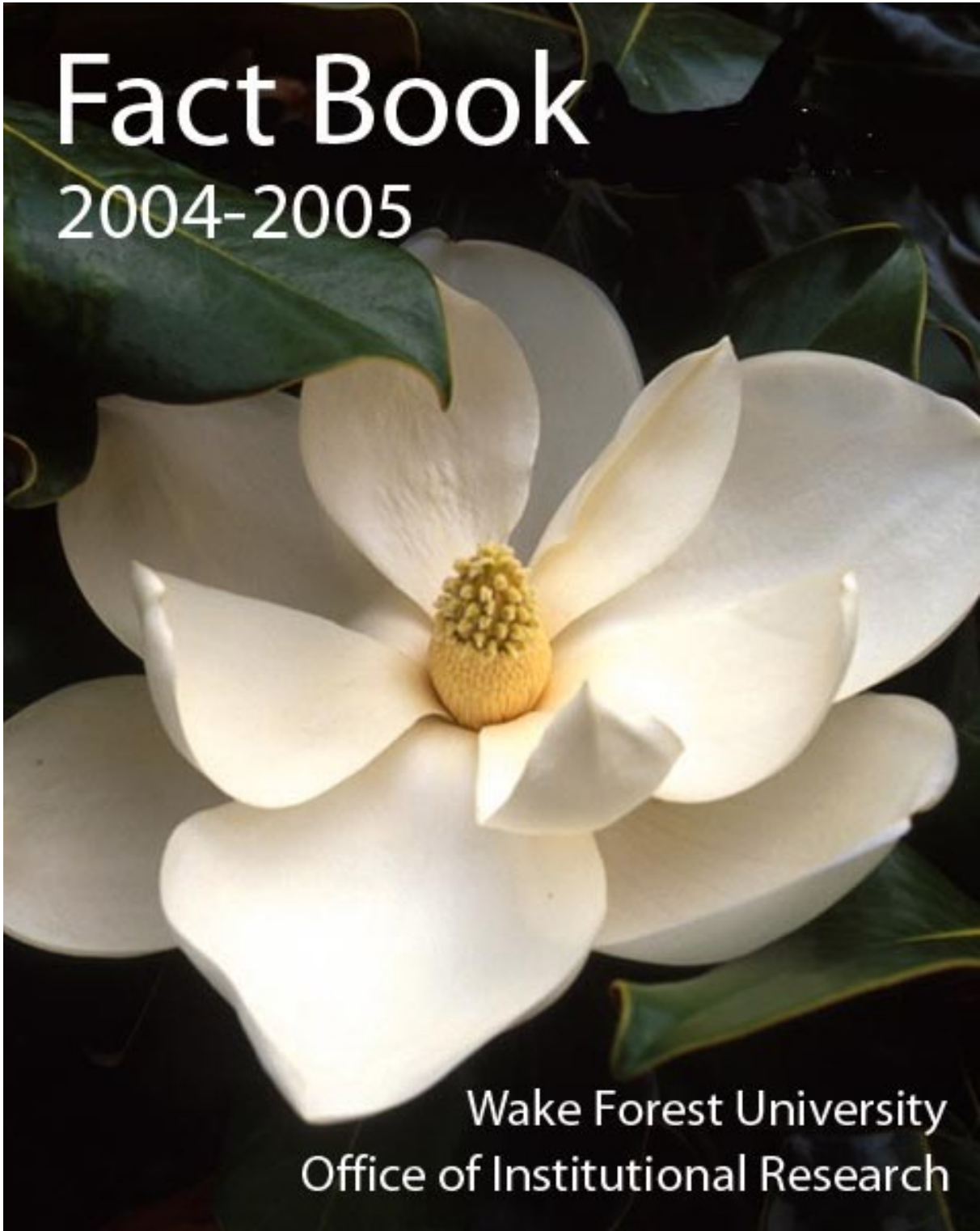


# Fact Book

2004-2005



Wake Forest University  
Office of Institutional Research

# **Wake Forest University**

## **Fact Book 2004-2005**

**Fourteenth Edition – February 2005**

### **Reynolda Campus**

Wake Forest College, Wayne Calloway School of Business and Accountancy, School of Law, Graduate School, Babcock Graduate School of Management and Divinity School

### **Bowman Gray Campus**

Wake Forest University School of Medicine – includes Graduate School and Allied Health Programs

### **Office of Institutional Research**

**Ross A. Griffith**, Director  
**Adam W. Shick**, Assistant Director  
**Sara R. Gravitt**, Research Assistant  
**Peter Zhang**, Graduate Assistant

**P. O. Box 7373 Reynolda Station, Winston-Salem, NC 27109 (336) 758-5244**

Web site: **<http://www.wfu.edu/ir>**

# Table of Contents

## General Information

History .....	1
Mission Statement.....	1
Statement of Principle on Diversity.....	2
Chronological History.....	2
Accreditation.....	3
Board of Trustees.....	4
Administration (Executive Council).....	4
Presidents .....	4
Administrative Organizational Charts .....	5
Academic Programs .....	7
Information Systems .....	8
Libraries .....	9

## Students

Admissions, Fall 2004 .....	10
Admissions, First-time Freshmen and Transfer Students.....	11
High School Rank and SAT Scores for Entering Freshmen.....	12
Average GRE Scores, Graduate School .....	13
Fall Enrollment for the University, 1984-2004 .....	14
Fall Enrollment by School and by Class.....	15
Ethnic Enrollment .....	16
University Ethnic Enrollment .....	17
Undergraduate Greek Affiliation .....	18
Undergraduate Religious Preference .....	19
North Carolina Undergraduate Students by County of Residence .....	20
Undergraduate Geographic Distribution by Region .....	21
Undergraduate Geographic Distribution by Region and State of Residence.....	22
Undergraduates from the U.S. and Other Countries.....	23
Total Number of Degrees Granted, 1983-2004 .....	24
Number and Type of Degrees Granted, 2003 and 2004 .....	25
Number and Type of Degrees Granted by School, 2000-2004.....	26
Graduates by Double Majors, 2003-2004.....	27
Graduates by Minor, 2003-2004.....	28
Undergraduates and Senior Graduates Receiving Degree Credits Abroad .....	29
Undergraduates Receiving Academic Distinction.....	29
Undergraduate Graduation and Retention Rates .....	30
Placement of 2004 Graduating Class.....	31
Placement of Graduating Classes, 2000-2004 .....	32
Wake Forest Students Applying to Medical School.....	33
Wake Forest Students Applying to Law School.....	34

## **Faculty and Staff**

Teaching Faculty and Faculty by Rank and Gender.....	35
Full-time Faculty by Ethnicity.....	36
Teaching Equivalents and Student-to-Faculty Ratio .....	37
Percentage of Part-time Faculty.....	37
Tenure of Full-time Instructional Faculty – Reynolda Campus .....	38
Highest Degree Earned by Faculty – Reynolda Campus.....	38
Tenure of Full-time Instructional Faculty – School of Medicine .....	39
Highest Degree Earned by Faculty – School of Medicine.....	39
Average Faculty Salary by Rank – Reynolda Campus.....	40
Average Faculty Salaries – College and Calloway.....	40
Full-time Staff by Category, Gender, and Ethnicity .....	41

## **Facilities**

Main Facilities Reynolda Campus, and Gross Square Feet by Decade.....	42
Student Housing Utilization.....	43

## **Finances**

First-year Student Tuition and Undergraduate Financial Aid .....	44
Annual Tuition/Fees for "Most Competitive" Private Universities.....	45
Undergraduate Student Financial Aid Programs .....	46
Undergraduate Financial Aid by Source.....	47
Average Instructional Dollars Expended Per Undergraduate Student .....	47
Research Grants by Fund Source and by Discipline – Reynolda Campus .....	48
Research Grants by Fund Source and by Discipline – Bowman Gray Campus .....	49
Sources of Revenue – Reynolda Campus .....	50
Expenditures – Reynolda Campus .....	51
Sources of Revenue – Bowman Gray Campus .....	52
Expenditures – Bowman Gray Campus .....	53
Summary of Total Giving to Wake Forest.....	54
Market Value of Endowment.....	54
Charitable Contributions by Category .....	55
Alumni Giving Percentage.....	55



**2004-05**  
**GENERAL INFORMATION**

## **History of Wake Forest University**

On February 3, 1834, the school was founded as Wake Forest Institute. Located in the town of Wake Forest, North Carolina, the school was rechartered as Wake Forest College in 1838. In 1894 the School of Law was established. The School of Medicine, founded in 1902, offered a two-year medical program until 1941. In that year, the school moved from the town of Wake Forest to Winston-Salem, became associated with the North Carolina Baptist Hospital, and was named the Bowman Gray School of Medicine. This facility is located approximately four miles from the main campus. In 1942, Wake Forest admitted women as regular undergraduate students.

In 1946 the Trustees of Wake Forest College and the Baptist State Convention of North Carolina accepted a proposal by the Z. Smith Reynolds Foundation to relocate the College to Winston-Salem. The late Charles H. Babcock and his wife, the late Mary Reynolds Babcock, contributed a campus site, and building funds were received from the Z. Smith Reynolds Foundation and other sources. In 1956 the College moved all operations. The old Wake Forest campus is now home to the Southeastern Baptist Theological Seminary.

A School of Business Administration was established in 1948. In 1969, the School was named the Charles H. Babcock School of Business Administration and admitted the first graduate students in 1971. In 1972, the school enrolled only graduate students and the name was changed to the Charles H. Babcock Graduate School of Management. At that time, a Department of Business and Accountancy and a Department of Economics were established within the College. In 1980, the Department of Business and Accountancy was reconstituted as the School of Business and Accountancy; and, the name was changed to the Wayne Calloway School of Business and Accountancy in 1995.

In February 1996, the trustees approved the opening of a Divinity School. A full-time dean was hired in July 1996 with the first class enrolling in fall 1999. In October 1997, the Bowman Gray School of Medicine was renamed the Wake Forest University School of Medicine, while its campus is now known as the Bowman Gray Campus.

## **The Mission and Purpose of Wake Forest University**

(As approved by the Board of Trustees – March 22, 2002)

Wake Forest is a university dedicated to the pursuit of excellence in the liberal arts and in graduate and professional education. Its distinctiveness in its pursuit of its mission derives from its private, co-educational, and residential character; its size and location; and its Baptist heritage. Each of these factors constitutes a significant aspect of the unique character of the institution.

The University is now comprised of seven constituent parts: two undergraduate institutions, Wake Forest College and the School of Business and Accountancy; the Graduate School; and four professional schools: the School of Law, the School of Medicine, the Babcock Graduate School of Management and the School of Divinity. It seeks to honor the ideals of liberal learning, which entail commitment to transmission of cultural heritages; teaching the modes of learning in the basic disciplines of human knowledge; developing critical appreciation of moral, aesthetic and religious values; advancing the frontiers of knowledge through in-depth study and research; and applying and utilizing knowledge in the service of humanity.

Wake Forest has been dedicated to the liberal arts for over a century and a half; this means education in the fundamental fields of human knowledge and achievement, as distinguished from education that is technical or narrowly vocational. It seeks to encourage habits of mind that ask "why," that evaluate evidence, that are open to new ideas, that attempt to understand and appreciate the perspectives of others, that accept complexity and grapple with it, that admit error, and that pursue truth. Wake Forest College has by far the largest student body in the University, and its function is central to the University's larger life. The College and the Graduate School are most singularly focused on learning for its own sake; they, therefore, serve as exemplars of specific academic values in the life of the university.

Beginning as early as 1894, Wake Forest accepted an obligation to provide professional training in a number of fields, as a complement to its primary mission of liberal arts education. This responsibility is fulfilled in the conviction that the humane values embodied in the liberal arts are also centrally relevant to the professions. Professional education at Wake Forest is characterized by a commitment to ethical and other professional ideals that transcend technical skills. Like the Graduate School, the professional schools are dedicated to the advancement of learning in their fields. In addition, they are specifically committed to the application of knowledge to solving concrete problems of human beings. They are strengthened by values and goals which they share with the College and Graduate School, and the professional schools enhance the work of these schools and the University as a whole by serving as models of service to humanity.

Wake Forest was founded by private initiative, and ultimate decision-making authority lies in a privately appointed Board of Trustees rather than in a public body. Funded to a large extent from private sources of support, it is determined to chart its own course in the pursuit of its goals. As a co-educational institution, it seeks to "educate together" persons of

both sexes and from a wide range of backgrounds --- racial, ethnic, religious, geographical, socioeconomic, and cultural. Its residential features are conducive to learning and the pursuit of a wide range of co-curricular activities. It has made a conscious choice to remain small in overall size; it takes pride in being able to function as a community rather than a conglomerate. Its location in the Piedmont area of North Carolina engenders an ethos that is distinctively Southern, and more specifically North Carolinian. As it seeks further to broaden its constituency and to receive national recognition, it is also finding ways to maintain the ethos associated with its regional roots.

Wake Forest is proud of its Baptist and Christian heritage. For more than a century and a half, it has provided the University an indispensable basis for its mission and purpose, enabling Wake Forest to educate thousands of ministers and laypeople for enlightened leadership in their churches and communities. Far from being exclusive and parochial, this religious tradition gives the University roots that ensure its lasting identity and branches that provide a supportive environment for a wide variety of faiths. The Baptist insistence on both separation of church and state and local autonomy has helped to protect the University from interference and domination by outside interests, whether these be commercial, governmental, or ecclesiastical. The Baptist stress upon an uncoerced conscience in matters of religious belief has been translated into a concern for academic freedom. The Baptist emphasis upon revealed truth enables a strong religious critique of human reason, even as the claims of revelation are put under the scrutiny of reason. The character of intellectual life at Wake Forest encourages open and frank dialogue and provides assurance that the University will be ecumenical and not provincial in scope, and that it must encompass perspectives other than the Christian. Wake Forest thus seeks to maintain and invigorate what is noblest in its religious heritage.

### **Statement of Principle on Diversity**

Wake Forest University is a community of men and women that seeks the enlightenment and freedom which come through diligent study and learning. Its higher goal, however, is to give life to the University motto "Pro Humanitate," as members translate a passion for knowledge into compassionate service.

The community shares a tradition that embraces freedom and integrity and acknowledges the worth of the individual. The heritage, established by the school's founders and nurtured by succeeding generations, promotes a democratic spirit arising from open-mindedness and discourse.

Wake Forest fosters compassion and caring for others. Its collective strength and character are derived from the values and distinctive experiences of each individual; therefore, it affirms the richness of human intellect and culture and its contribution to knowledge, faith, reason, and dialogue. Furthermore, it strives toward a society in which good will, respect, and equality prevail. To that end, Wake Forest University rejects hatred and bigotry in any form and promotes justice, honor, and mutual trust.

### **Chronological History of Wake Forest University**

- 1834 Founded in the town of Wake Forest, N.C., as Wake Forest Manual Labor Institute in cooperation with the N.C. Baptist Convention
- 1838 Named Wake Forest College
- 1894 School of Law established
- 1902 School of Medicine founded
- 1921 First Summer Session
- 1936 Approval of the School of Law by the American Bar Association
- 1941 Relocation of the School of Medicine to Winston-Salem and eventual change of name to Bowman Gray School of Medicine and association with the North Carolina Baptist Hospital
- 1942 Women admitted as undergraduate students
- 1948 School of Business Administration established
- 1956 Move to Winston-Salem in response to an endowment from the Z. Smith Reynolds Foundation
- 1961 Division of Graduate Studies established
- 1967 Became Wake Forest University
- 1969 School of Business Administration renamed Charles H. Babcock School of Business Administration
- 1972 Charles H. Babcock Graduate School of Management enrolled first graduate students. Department of Business and Accountancy and a Department of Economics established in the College.
- 1980 Department of Business and Accountancy renamed School of Business and Accountancy

- 1986 Redefined the relationship with the N.C. Baptist State Convention
- 1995 School of Business and Accountancy changed name to Wayne Calloway School of Business and Accountancy
- 1997 Change of name to Wake Forest University School of Medicine
- 1999 Opening of the Wake Forest University Divinity School
- 2002 Incorporation of Wake Forest University Health Sciences

## **Accreditation**

### **Wake Forest University is a Member of or Accredited by:**

AACSB International – The Association to Advance Collegiate Schools of Business  
 American Association of Nurse Anesthetists  
 American Chemical Society  
 American Council on Education  
 Accreditation Review Commission on Education for the Physician Assistant of the American Medical Association  
 Association of American Colleges  
 Association of American Law Schools  
 Association of American Medical Colleges  
 Association of Theological Schools – Associate Membership  
 Board of Law Examiners  
 Commission on Colleges of the Southern Association of Colleges and Schools  
 Council for Accreditation of Counseling and Related Educational Programs  
 Council on Certification of Nurse Anesthesia Educational Programs  
 Council of Graduate Schools  
 Council of Southern Graduate Schools  
 Council of the North Carolina State Bar  
 Council of the Section of Legal Education and Admissions to the Bar of the American Bar Association  
 European Foundation for Management Development  
 Liaison Committee on Medical Education of the American Medical Association and the Association of American Medical Colleges  
 National Accrediting Agency for Clinical Laboratory Sciences  
 National Association of Independent Colleges and Universities  
 National Council for the Accreditation of Teacher Education  
 North Carolina Association of Colleges and Universities  
 North Carolina Independent Colleges and Universities  
 North Carolina Conference of Graduate Schools  
 North Carolina Department of Public Instruction  
 Oak Ridge Associated Universities  
 Section on Medical Schools of the American Medical Association  
 Southern Universities Conference



## 2004-2005 University Board of Trustees

Diana M. Adams	Graham W. Denton, Jr.	Albert R. Hunt	L. Glenn Orr, Jr.
Jerry H. Baker	Lisbeth C. Evans	Jeanette W. Hyde	Celeste Mason Pittman
W. Louis Bissette, Jr.	Lelia B. Farr	James W. Johnston	Andrew J. Schindler
Donna A. Boswell	Martin L. Garcia	James W. Judson, Jr.	Adelaide A. Sink
Simpson O. Brown, Jr.	Marvin D. Gentry	Deborah D. Lambert	K. Wayne Smith
Bobby R. Burchfield	Murray C. Greason, Jr.	Dee Hughes LeRoy	Janice K. Story
Jocelyn Burton	William B. Greene, Jr.	Douglas F. Manchester	Lloyd P. Tate, Jr.
Jan W. Calloway	James R. Helvey, III	William L. Marks	J. Lanny Wadkins, Jr.
J. Donald Cowan, Jr.	Harvey R. Holding	Russell W. Meyer, Jr.	James T. Williams, Jr.
Ronald E. Deal	Lawrence D. Hopkins	Kenneth D. Miller	Charles Jeffrey Young
James A. Dean	Alice Kirby Horton	Barbara B. Millhouse	Kyle A. Young

## Life Trustees

Bert L. Bennett	Floyd Fletcher	Petro Kulynych	D. E. Ward, Jr.
Louise Broyhill	Victor I. Flow, Jr.	John G. Medlin, Jr.	Lonnie B. Williams
C. C. Cameron	Jean H. Gaskin	Arnold D. Palmer	J. Tylee Wilson
Charles W. Cheek	Weston P. Hatfield	Frances P. Pugh	T. Eugene Worrell
Egbert L. Davis, Jr.	James E. Johnson, Jr.	Zachary Smith	

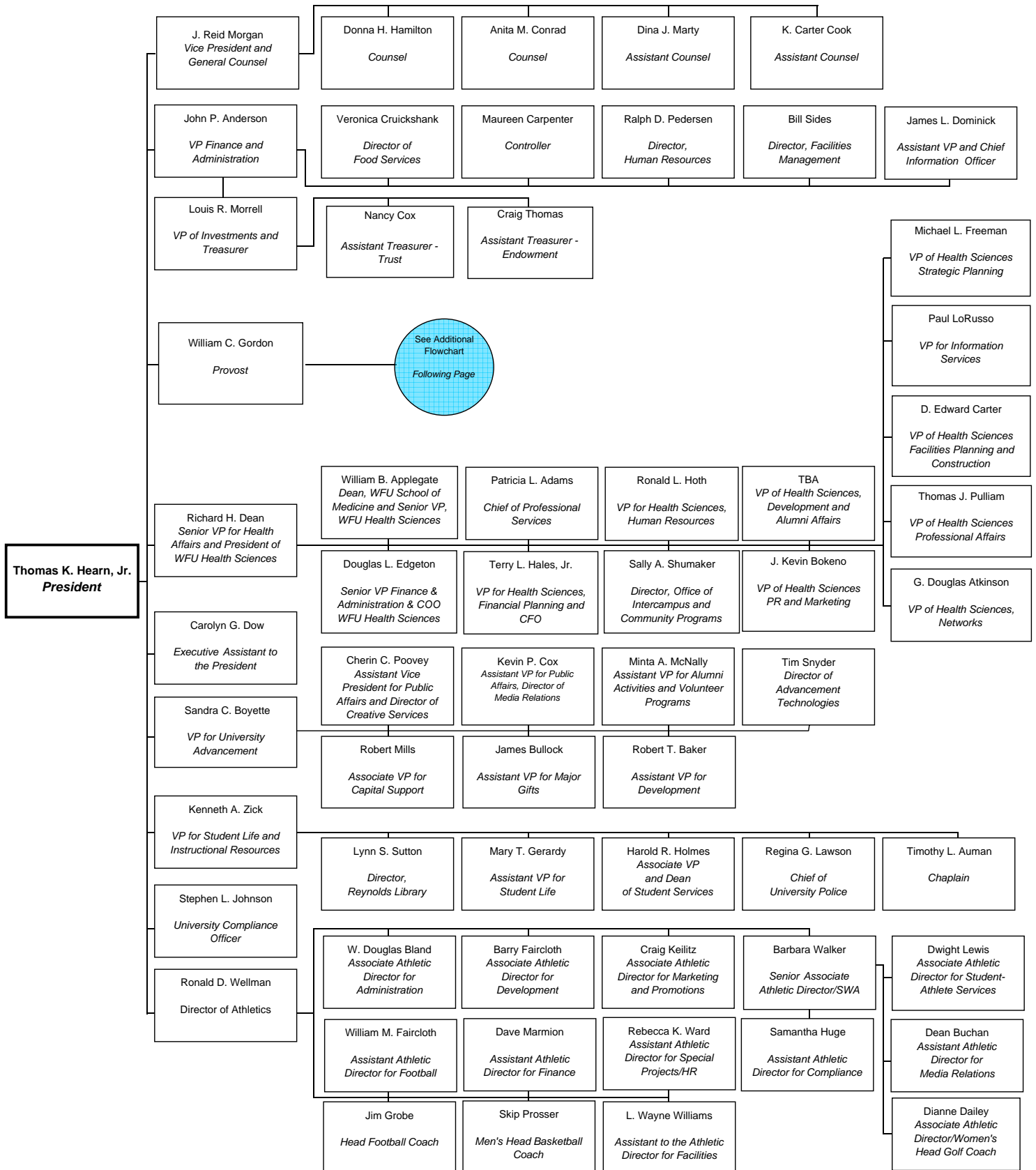
## Administration – Executive Council

Thomas K. Hearn, Jr.	President
Richard H. Dean	Senior Vice President for WFU Health Affairs and President, WFU Health Sciences
William C. Gordon	Provost
John P. Anderson	Vice President for Finance and Administration
William B. Applegate	Dean, School of Medicine and Senior Vice President, WFU Health Sciences
Sandra C. Boyette	Vice President for University Advancement
Douglas L. Edgeton	Senior Vice President Finance and Administration, WFU Health Sciences
J. Reid Morgan	Vice President and General Counsel
Louis R. Morrell	Vice President for Investments and Treasurer
Ronald D. Wellman	Director of Athletics
Kenneth A. Zick	Vice President for Student Life and Instructional Resources
Deborah L. Best	Dean of the College
Toby A. Hale	Dean of the Summer School
Bill J. Leonard	Dean of the Divinity School
Gordon A. Melson	Dean of the Graduate School
Ajay Patel	Dean, Babcock Graduate School of Management
Robert K. Walsh	Dean of the Law School
Jack E. Wilkerson, Jr.	Dean of the Calloway School of Business and Accountancy
Samuel T. Gladding	Associate Provost
Lynn S. Sutton	Director, Z. Smith Reynolds Library
Harold R. Holmes	Associate Vice President and Dean of Student Services
Carolyn G. Dow	Executive Assistant to the President

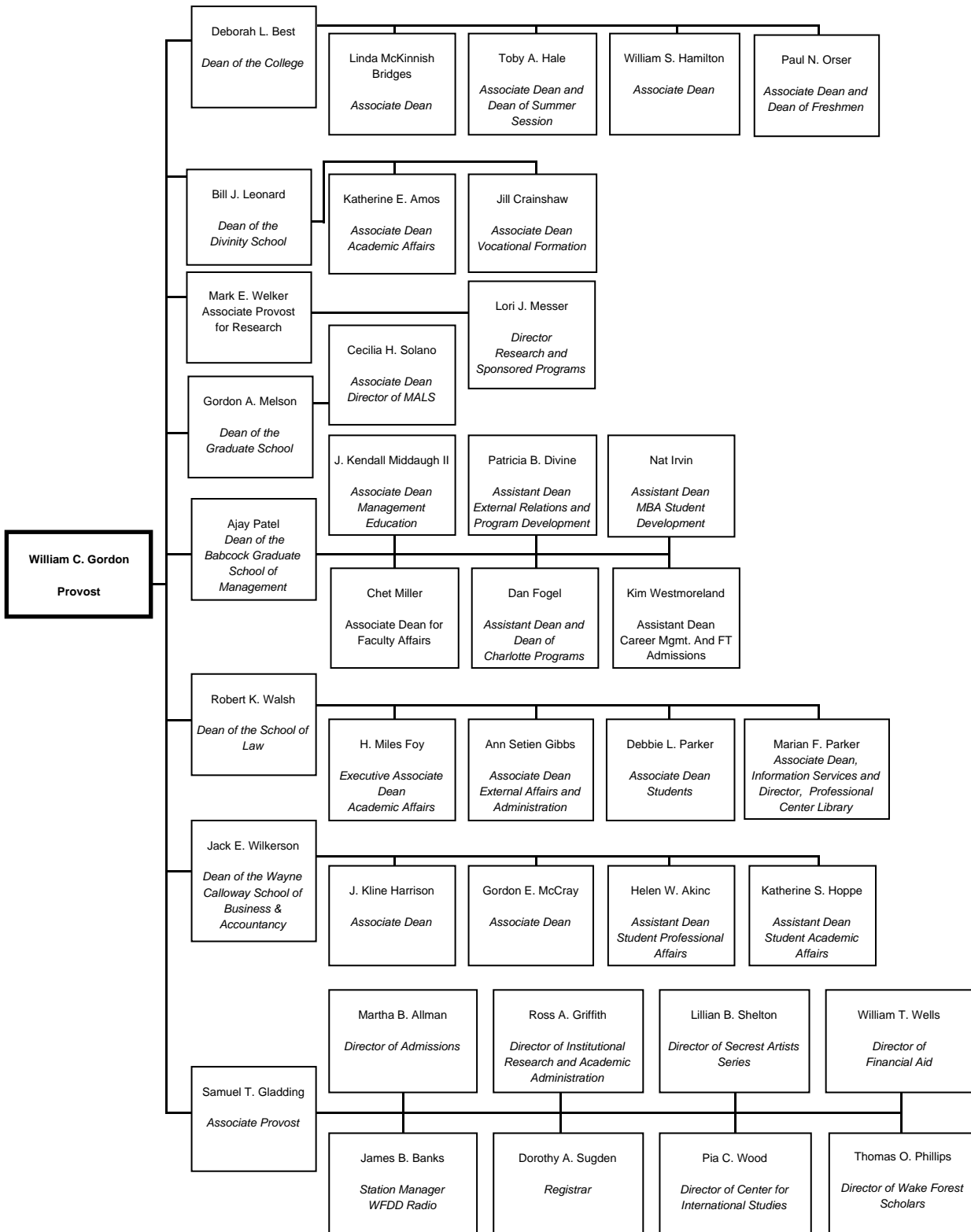
## Presidents of Wake Forest University

1834	Samuel Wait	1884	Charles Elisha Taylor	1967	James Ralph Scales
1845	William Hooper	1905	William Louis Poteat	1983	Thomas K. Hearn, Jr.
1849	John Brown White	1927	Francis Pendleton Gaines		
1854	Washington Manly Wingate	1930	Thurman D. Kitchin		
1879	Thomas Henderson Pritchard	1950	Harold Wayland Tribble		

# ADMINISTRATIVE ORGANIZATIONAL CHART



# ADMINISTRATIVE ORGANIZATIONAL CHART



## Degrees Offered by Academic Program

<b>Academic Program</b>	<b>Degree Offered</b>	<b>Academic Program</b>	<b>Degree Offered</b>
<b>Allied Health</b>		<b>Health Sciences</b>	
Medical Technology	C, BS (combined degree)	Combined MD/PhD*	MD/PhD
Nurse Anesthesia	C, MSN (combined degree)	Dentistry	BS (combined degree)
Physician Assistant	MMS	Health and Exercise Science	BS, MS
		Medicine	MD, MD/MBA, MD/MS
<b>Bio-Medical Sciences</b>		<b>Law</b>	
Biochemistry and Molecular Biolog	PhD	Combined JD/MBA	JD/MBA
Biomedical Engineering	MS, PhD	Law	JD, LL.M
Cancer Biology	PhD	<b>Letters</b>	
Clinical Epidemiology & Health Services Research	MS	Classical Studies	BA
Comparative Medicine	MS	English	BA, MA
Microbiology and Immunology	PhD	<b>Liberal Studies</b>	
Molecular and Cellular Pathobiology	PhD	Liberal Studies	MALS
Molecular Genetics	PhD	<b>Life Sciences</b>	
Molecular Medicine	MS, PhD	Biology	BA, BS, MS, PhD
Neurobiology and Anatomy	PhD	<b>Mathematics</b>	
Neuroscience	PhD	Mathematics	BA, BS, MA
Pharmacology	PhD	Mathematical Business	BS
Physiology	PhD	Mathematical Economics	BS
<b>Business and Management</b>		<b>Philosophy</b>	
Accountancy	BS, MSA	Philosophy	BA
Analytical Finance	BS	<b>Physical Sciences</b>	
Business	BS	Chemistry	BA, BS, MS, PhD
Business Administration and Management	MBA	Physics	BA, BS, MS, PhD
Combined JD/MBA	JD/MBA	<b>Psychology</b>	
Combined MD/MBA	MD/MBA	Psychology	BA, MA
Combined MSA/MBA	MSA/MBA	<b>Religion</b>	
Combined MBA/MBA	MSA/MBA	Religion	BA, MA
Combined MBA/PhD*	MBA/PhD	<b>Renewable Natural Resources</b>	
Information Systems	BS	Forestry and Environmental Studie	BS (combined degree)
<b>Communication</b>		<b>Social Sciences and History</b>	
Communication	BA, MA	Anthropology	BA
<b>Counseling</b>		Economics	BA
Counseling	MA	History	BA
<b>Computer and Information Sciences</b>		Political Science	BA
Computer Science	BS, MS	Sociology	BA
<b>Education</b>		<b>Theology</b>	
Education	BA, BS	Divinity	M. Div.
Teaching	MAEd	<b>Visual and Performing Arts</b>	
<b>Engineering</b>		Art History	BA
Engineering	BS (combined degree)	Studio Art	BA
<b>Foreign Languages</b>		Music History/Theory/Compositio	BA
East Asian Languages and Cultures	BA	Music Performance	BA
French	BA	Theatre	BA
German	BA		
Greek (Classical)	BA		
Latin	BA		
Russian	BA		
Spanish	BA		

\*PhD of combined degrees can be obtained in any discipline offering PhD

## Information Systems (Reynolda Campus)

Information Systems supports University instruction, research, and administrative needs through computing and telecommunications services. The campus computer network offers wired and wireless high-speed connectivity from all residence hall rooms, all academic and administrative buildings, and in common areas such as Benson University Center.

All students on the Reynolda Campus are given a network login ID; the login is maintained as long as the student is enrolled. This account provides students with access to networked computer resources such as electronic mail, client-server software packages, various courseware applications, and administrative services. Upon matriculation, and again at the beginning of the junior year, undergraduate students receive a new IBM ThinkPad as part of their tuition. The current ThinkPad model has an Intel Pentium M 1.5 GHz processor, 768 MB RAM, 32 MB video ram, 15" active matrix screen, 80 gigabyte hard drive, and a combination CD-RW/DVD-RW drive. Software on the ThinkPad includes Windows XP Professional Edition, Microsoft Office 2003 Professional, and Mozilla, Internet Explorer and Macromedia Dreamweaver, among other Internet applications. The ThinkPad also has a variety of research, analytical, and development tools, as well as the latest versions of Symantec Antivirus and LavaSoft Ad-Aware programs. Maintenance and support for the laptop computers is provided on campus through an award-winning service center. Loaner computers are available for students as needed. In addition to the ThinkPad, all first-year students receive an HP PSC 1350 color inkjet printer/scanner/copier.

The department also supports an extensive information system that includes documentation, class schedules and grades, University-wide activity calendars, the Wake Forest University Libraries information system, the electronic version of the student newspaper *Old Gold and Black*, and the new student-run Web site, <http://student.wfu.edu>. The Wake Forest Information Network (WIN) provides the University community with faculty, staff, and student databases and directories, an alumni directory, class registration and degree audit services, and customizable links to news, weather, and research sites.

The University has an extensive collection of computing facilities that serve both academic and administrative needs. Two Hewlett-Packard series 3000s, 18 Windows 2000-03 servers, and six Intel-based Linux servers provide for administrative computing needs. An extensive LINUX and AIX-based infrastructure provides messaging, virus filtering, security, systems management, courseware, Intranet, and scientific and other research needs. Included among the LINUX systems is a supercomputing cluster containing 128 compute nodes. These systems are used exclusively for scientific computing by departments such as Computer Science and Physics. Wake Forest is one of few universities that provide undergraduate and graduate students access to such a cluster. Approximately 37 Windows 2000-03 servers provide basic authentication, file and print services. Windows 2000 servers, LINUX servers and IBM RD/6000 pSeries systems provide a variety of library services. Regular weekly maintenance, scheduled each Saturday from 9 a.m. until noon, may affect access to some or all of these services.

Programming languages available on the Academic Computing (AC) system include C, C++, Java, Perl, Tcl/Tk, Pascal, Cobol, Fortran77, and Fortran95. Statistical packages such as SPSS and SAS can be used for data analysis, forecasting, and financial modeling. Maple, a symbolic algebra package, is also available. Using the ThinkPads, students have access to a large variety of instructional, classroom, and research resources through the campus network including the online catalog, databases, and electronic journals provided by the Z. Smith Reynolds Library. Many departments on campus have their own computing resources in addition to those available through the Information Systems Department.

Wake Forest students, faculty, and staff also have access to computing resources outside the University. The University is a member of the Inter-University Consortium for Political and Social Research (ICPSR), located at the University of Michigan. Membership in ICPSR provides faculty and students with access to a large library of data files, including public opinion surveys, cross-cultural data, financial data, and complete census data. The University is also a member of EDUCAUSE, a national consortium of colleges and universities concerned with computing issues.

Information Systems supports an extensive high-speed data network infrastructure on the Reynolda Campus. This infrastructure includes a Gigabit Ethernet network core, Fast Ethernet (100MB) to the desktop and Gigabit connections to the Internet. Each residence hall room is equipped with one wired network connection per resident and wired connections are available in most classrooms. In addition, all Wake Forest students have access to a campus-wide pervasive wireless infrastructure offering 802.11 a and g wireless access. This network currently connects all academic, administrative and residence buildings and provides robust interconnectivity.

Wake Forest has a redundant Gigabit Ethernet Internet connection to WinstonNet, which provides a Gigabit Ethernet ring around the Winston-Salem academic community with a 622 Mbps OC-12 connection to the Internet. Through this connection, Wake Forest has access to extensive LINUX and AIX-based supercomputing facilities located at the MCNC/North Carolina Supercomputing Center in the Research Triangle and to all the premier research networks in the World, including Internet II and Abilene. Wake Forest is also working closely with the North Carolina Research and Education Network on other advanced networking technologies.

Information Systems also provides telephone and cable television services to the students, faculty, and staff of Wake Forest. All telephone users receive voice mail. The cable TV system is provided through an agreement with Time

Warner Cable. Currently, more than 70 channels are available on the campus cable TV system, including HBO and several satellite-fed stations. Cable channel 2 is the Wake Forest University information channel, providing updated technology information, current weather conditions, and a calendar of campus events. WFDD-FM, National Public Radio from Wake Forest University, provides background music for this channel. Channel 6, the WAKE-TV channel, provides a forum for student talk shows and other student-oriented programming. Channels 20 and 22 carry SCOLA, a non-profit educational service that features television programming from more than fifty different countries in their original languages.

Information Systems provides assistance by telephone, e-mail, and online through ResolveIT. Students, faculty and staff can receive assistance in person at the Help Desk from 8 a.m. - 9 p.m., Monday through Thursday; 8 a.m. - 5 p.m. on Friday; and 5-9 p.m. on Sunday. A voice mail retrieval system is activated on Saturdays to respond to campus-wide emergency calls. On-site computing support is available in residence halls through Resident Technology Advisors (RTAs).

More than 160 students are involved in Information Systems student technology programs. This extensive student-centric computing environment is a key component of our educational support mission. Students work in a number of settings that include providing direct support for students, faculty, and staff; providing technology training in the community; and delivering technology management and consulting services for external clients. In addition, students participate in unique leadership and community outreach programs including technology-focused residence halls, a student technology council, and community network implementation.

## **Libraries**

The libraries of Wake Forest University support instruction and research at the undergraduate level and in the disciplines awarding graduate degrees. The libraries of the University hold membership in the Association of College and Research Libraries, and in the Association of Southeastern Research Libraries. They rank among the top libraries in the Southeast in expenditures per student.


The Wake Forest University libraries include the Z. Smith Reynolds Library, the Professional Center Library (serving the Law School and the Babcock Graduate School of Management), and the Coy C. Carpenter Library of the Wake Forest University School of Medicine.

The three libraries maintain collections totaling over 1.7 million print volumes and subscriptions to more than 16,000 periodicals and serials, largely of scholarly content. The Z. Smith Reynolds Library holds over 1.4 million volumes in the general collection, over 1 million reels of microfilm and pieces of microtext, and over 10,000 videos and DVD's. As a congressionally designated selective federal depository and depository of North Carolina government information, the ZSR Library holds nearly 170,000 government documents. The Professional Center Library holds over 200,000 volumes and the Coy C. Carpenter Library holds over 158,000 volumes. The three libraries share an online catalog that also provides access to electronic resources, databases, and an ever-expanding collection of electronic journals, all accessible via the campus network and remotely.

The Z. Smith Reynolds Library provides comprehensive reference and research services, including assistance with online searching, directed and independent research as well as discipline-related library instruction, information literacy classes, and general library orientation. Reference tools are available in electronic and print formats. Library staff offer undergraduates a one-credit course, LIB100: Accessing Information in the 21<sup>st</sup> Century, which focuses on effective use of research strategies, search techniques, and evaluation of resources. Wake Forest students, faculty and staff may use interlibrary loan services to borrow materials from other libraries throughout the country at no charge. Special collections in the Z. Smith Reynolds Library include the Rare Books Collection, which emphasizes American and British authors of the late nineteenth and early twentieth centuries. The Ethel Taylor Crittenden Baptist Historical Collection and the Wake Forest College/University Archive are maintained here as well.

Facilities in the Z. Smith Reynolds Library include the Information Technology Center which is equipped for multimedia viewing, editing and scanning, and has a computer lab for student use. Training in computer and multimedia technologies is provided through the ITC. Several small group study rooms are located throughout the library and may be reserved. Two 24-hour study areas and a cyber café are accessible by key-card. The entire library is equipped for wireless internet access.

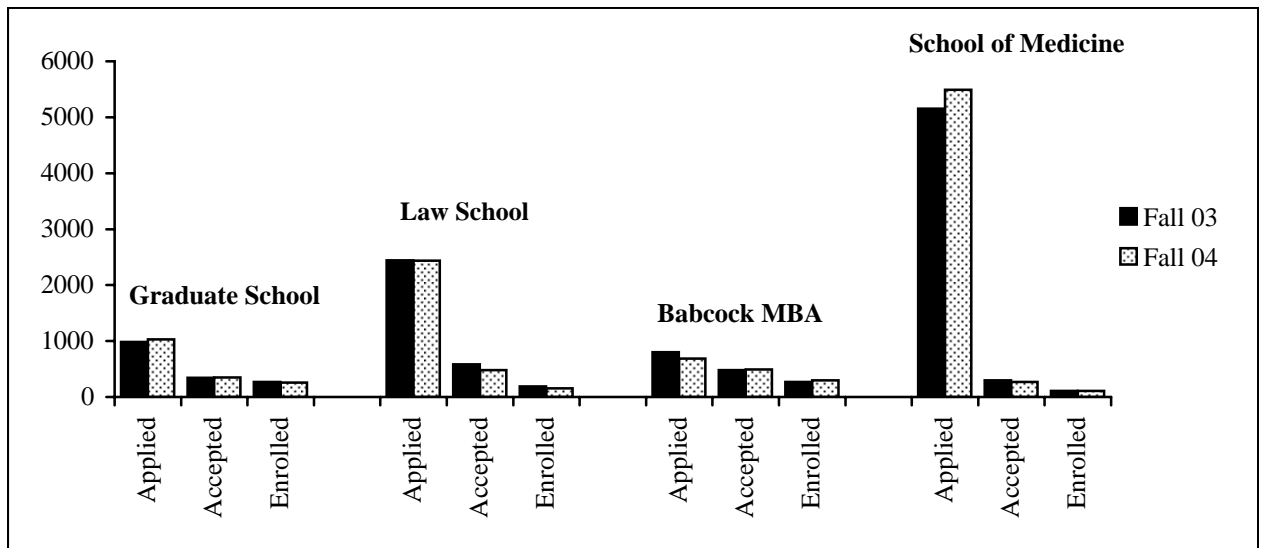
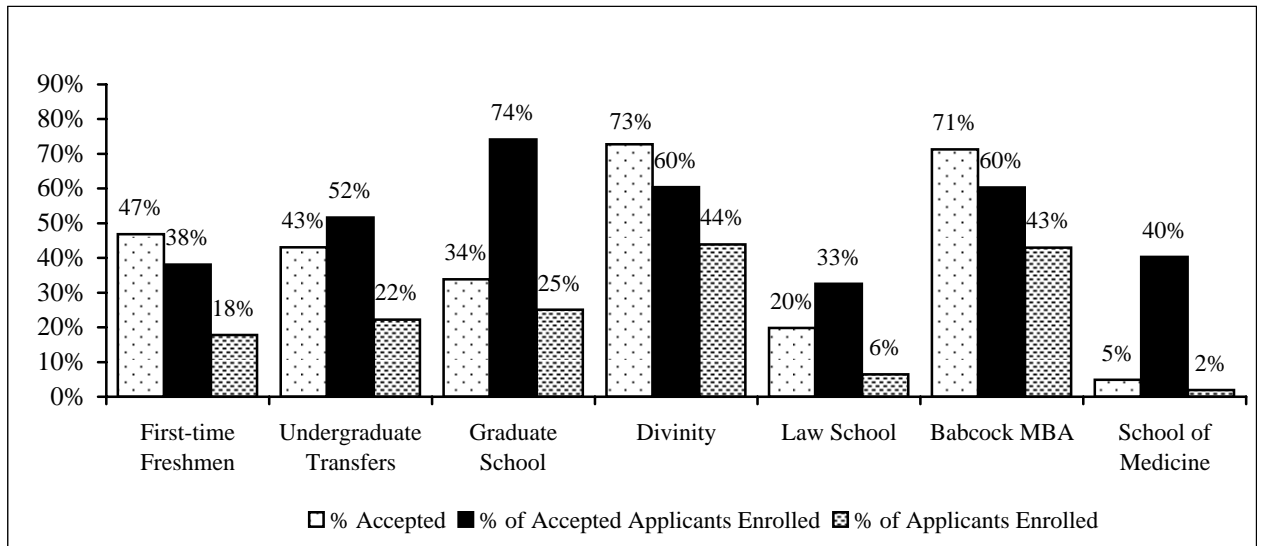
The Coy C. Carpenter Library of the Wake Forest University School of Medicine houses special collections including the written and oral history of the School of Medicine, the history of neurology, and the Suzanne Meads Art in Medicine collection. The Dorothy Carpenter Medical Archives also contain the papers of the American Neurological Association, the American Society of Neuroimaging, the Association of Medical Illustrators, the Society of Neurological Surgeons, the Association for Research in Nervous and Mental Disease, the North Carolina Surgical Association, and the North Carolina Baptist Hospital Nursing School.



**2004-05  
STUDENTS**

# Admissions, Fall 2004

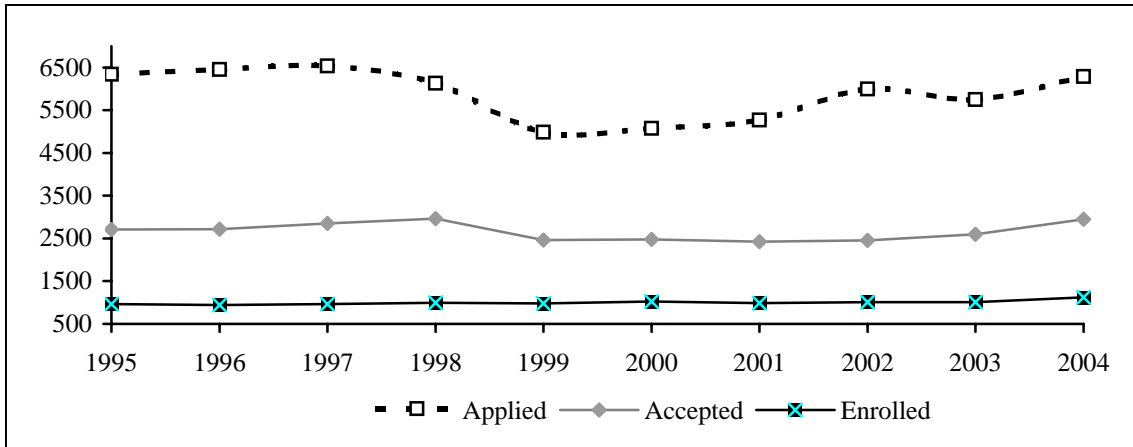
	Number of Applicants				Number Accepted				Number Enrolled			
	Male	Female	NC	OS	Male	Female	NC	OS	Male	Female	NC	OS
Freshmen	6289		6289		2945		2945		1121		1121	
	2873	3416	1226	5063	1374	1571	755	2190	561	560	273	848
Und. Transfers	216		216		93		93		48		48	
	119	97	60	156	48	45	19	74	22	26	12	36
Grad. School	1027		1027		348		348		258		258	
	429	598	343	684	138	210	164	184	106	152	130	128
Divinity	66		66		48		48		29		29	
	41	25	27	39	30	18	18	30	17	12	10	19
Law School	2435		2435		483		483		157		157	
	1346	1089	682	1753	267	216	135	348	88	69	44	113
Babcock MBA	689		689		491		491		296		296	
	471	218	270	419	334	157	218	273	203	93	163	133
School of Med.	5491		5491		268		268		108		108	
	2827	2664	583	4908	121	147	82	186	54	54	42	66





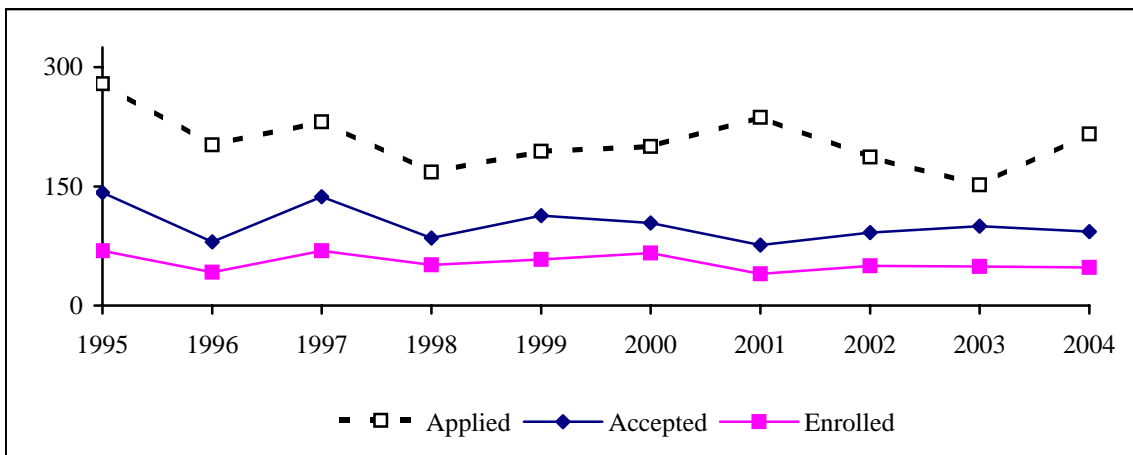
## Admissions, First-time Freshmen, Fall 1995-2004

Year	Applied	Accepted	Enrolled
1995	6342	2710	965
1996	6450	2715	940
1997	6536	2848	967
1998	6132	2962	993
1999	4982	2465	979
2000	5079	2480	1025
2001	5271	2421	989
2002	5995	2454	1007
2003	5752	2599	1007
2004	6289	2945	1121



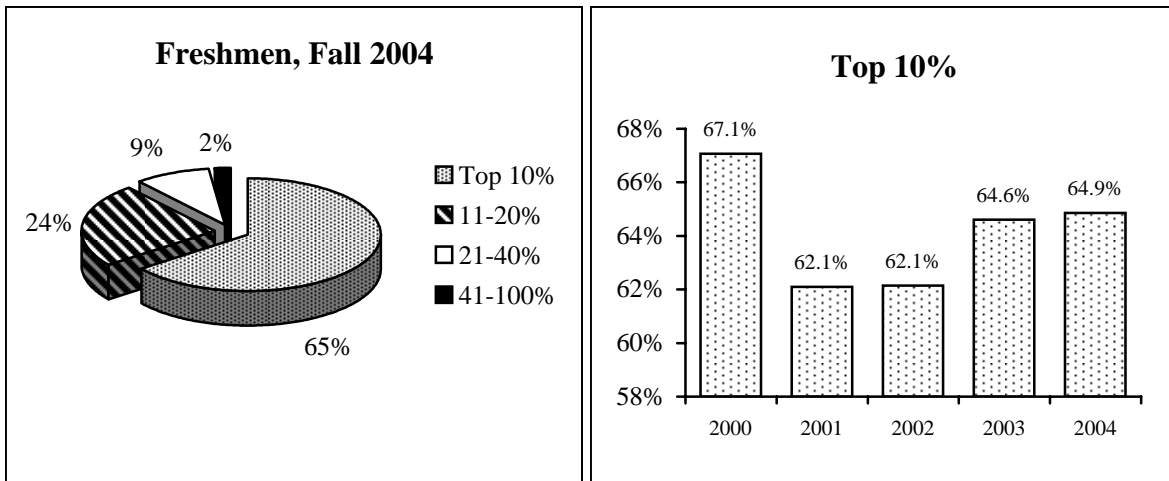
## Admissions, Undergraduate Transfer Students, Fall 1995-2004

Year	Applied	Accepted	Enrolled
1995	279	142	69
1996	202	80	42
1997	231	137	69
1998	168	85	51
1999	194	113	58
2000	200	104	66
2001	237	76	40
2002	187	92	50
2003	152	100	49
2004	216	93	48

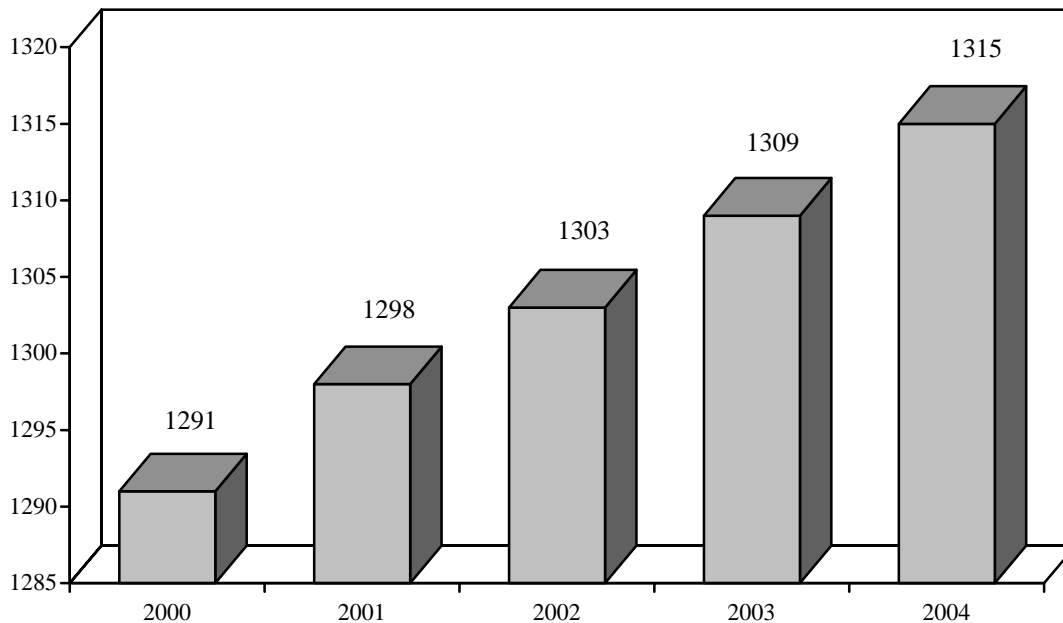


## High School Rank of Entering Freshmen, 2000-2004

Rank	2000		2001		2002		2003		2004	
	#	%	#	%	#	%	#	%	#	%
Top 10%	505	67.1%	503	62.1%	458	62.1%	440	64.6%	478	64.9%
11-20%	143	19.0%	192	23.7%	171	23.2%	140	20.6%	177	24.0%
21-40%	78	10.4%	96	11.9%	85	11.5%	72	10.6%	67	9.1%
41-60%	22	2.9%	12	1.5%	15	2.0%	21	3.1%	11	1.5%
61-80%	5	0.7%	2	0.2%	7	0.9%	6	0.9%	2	0.3%
81-100%	0	0.0%	5	0.6%	1	0.1%	2	0.3%	2	0.3%
Not Available	272		179		270		326		384	
<b>Total</b>	<b>1025</b>		<b>989</b>		<b>1007</b>		<b>1007</b>		<b>1121</b>	

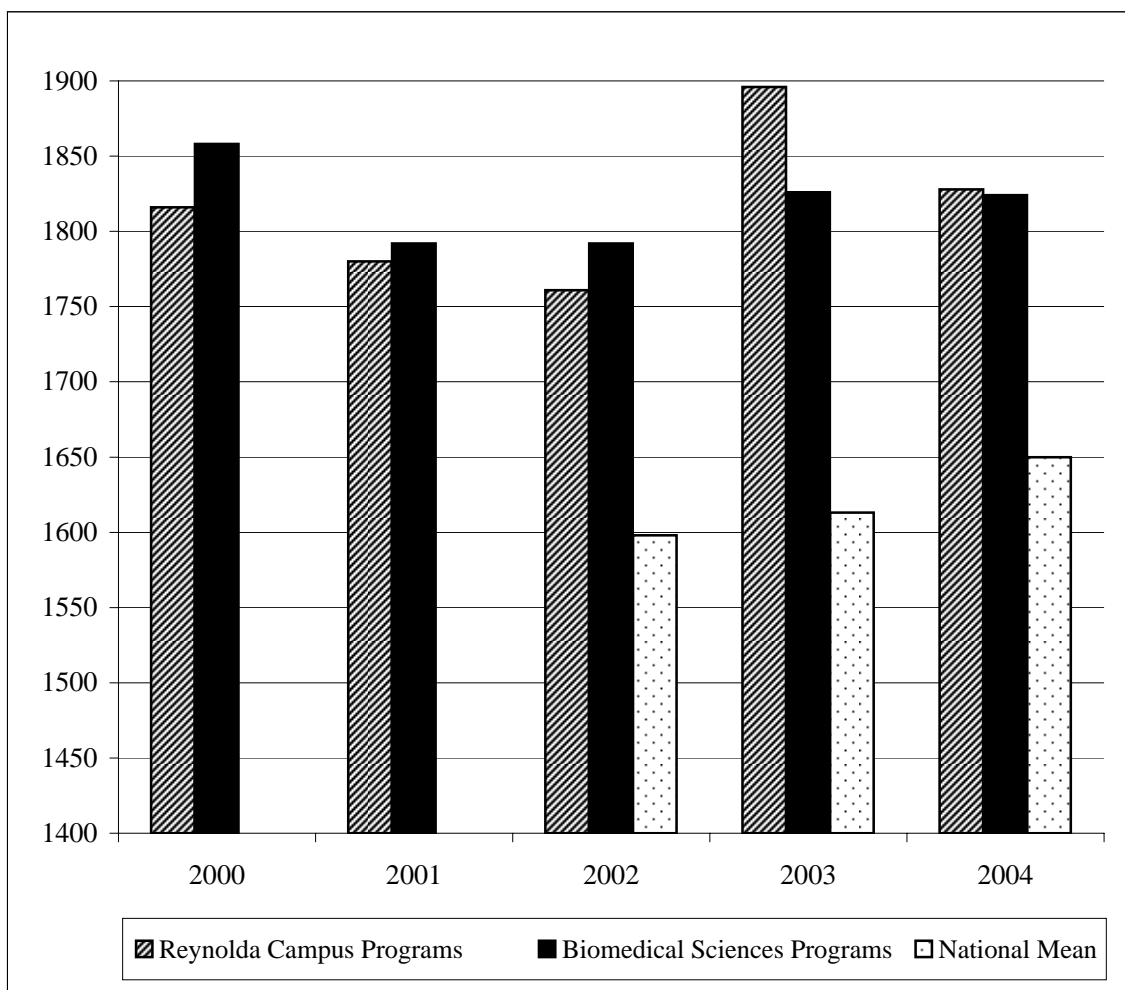


## Average SAT Scores for Entering Freshmen, 2000-2004



**Average GRE Scores for Entering Students, Graduate School, 2000-2004**

<b>Reynolda Campus Programs</b>		Verbal (%)	Quantitative (%)	Analytical (%)	Total
	2000	535 (69)	634 (64)	647 (74)	1816
	2001	523 (66)	630 (62)	627 (68)	1780
	2002	515 (62)	624 (57)	622 (62)	1761
	2003	561(76)	662(64)	673(71)	1896
	2004	546(69)	645(55)	637(65)	1828
<b>Biomedical Sciences Programs</b>					
	2000	531 (68)	660 (71)	667 (79)	1858
	2001	517 (64)	635 (63)	640 (72)	1792
	2002	525 (65)	646 (59)	621 (61)	1792
	2003	516 (64)	658 (64)	652 (68)	1826
	2004	503(60)	670(66)	651(73)	1824
National Mean (approximate) 2004		470	620	570	1660



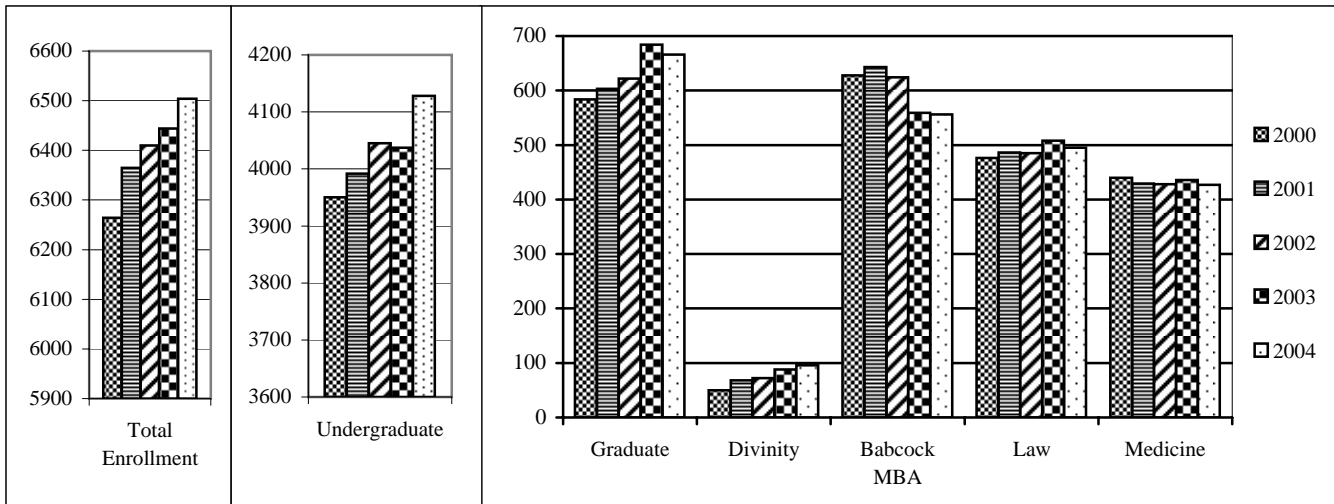
## Fall Enrollment, 1985-2004

Year	Undergraduate	Graduate	Divinity	Law	Management	Medicine	Allied Health*	Total
1985-86	3406	388	0	498	270	430	70	5062
1986-87	3472	339	0	491	270	425	57	5054
1987-88	3517	358	0	476	364	426	68	5029
1988-89	3579	398	0	464	423	419	54	5337
1989-90	3544	438	0	461	418	430	69	5360
1990-91	3592	470	0	461	451	439	64	5477
1991-92	3650	518	0	463	501	433	114	5679
1992-93	3624	467	0	473	507	436	117	5624
1993-94	3538	588	0	464	506	439	126	5661
1994-95	3620	552	0	472	513	448	143	5748
1995-96	3701	585	0	470	565	437	134	5892
1996-97	3771	578	0	460	615	450	127	6001
1997-98	3841	587	0	475	627	452	125	6107
1998-99	3855	583	0	475	654	445	122	6134
1999-00	3857 (3670)	575	28	472	648	441	133	6154
2000-01	3950 (3744)	584	50	476	628	440	136	6264
2001-02	3992 (3746)	603	68	486	643	429	144	6365
2002-03	4045 (3748)	622	72	485	624	428	134	6410
2003-04	4037 (3735)	684	88	508	559	436	132	6444
2004-05	4128 (3801)	666	96	495	556	427	136	6504

\*In the years 2002-03 and later, the Allied Health Category includes the Nurse Anesthesia and Physician Assistant programs in which students earn graduate degrees. The Medical Technology program is counted in "Undergraduate" since no graduate degree is awarded.

( ) = Reynolda Campus undergraduate students (excludes Study Abroad and Allied Health students)

## Enrollment by School, Fall 2000-2004



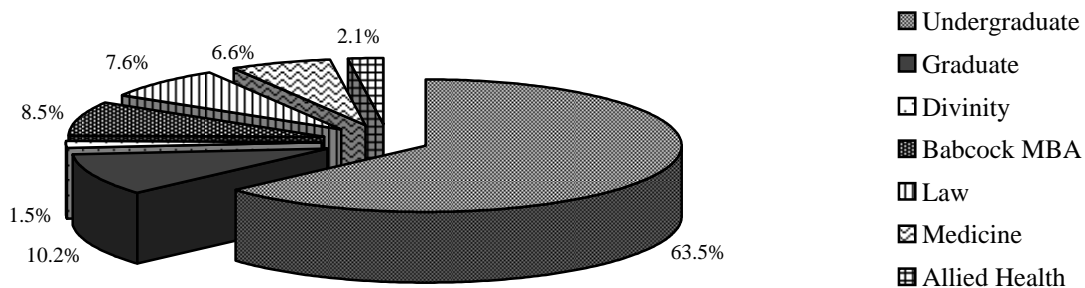
## Enrollment by Class and by School, Fall 2004

	Male	Female	Total	FTE**
Freshmen	578	572	1,150	1,145
Sophomores	496	520	1,016	1,010
Juniors	473	500	973	968
Seniors	476	489	965	942
Unclassified*	10	14	24	17
<b>Total Undergraduates</b>	<b>2,033</b>	<b>2,095</b>	<b>4,128</b>	<b>4,082</b>
<i>Allied Health (Undergraduate)</i>	2	6	8	8
<i>Study Abroad</i>	136	183	319	319
<i>Reynolda Campus</i>	1,895	1,906	3,801	3,755
Graduate - Arts & Sciences	181	241	422	391
Graduate - Medicine	99	145	244	240
Divinity	50	46	96	94
Babcock MBA	412	144	556	554
Law School	277	218	495	495
Medical School	243	184	427	427
Allied Health (Graduate)*	42	94	136	136
<b>University Total</b>	<b>3,337</b>	<b>3,167</b>	<b>6,504</b>	<b>6,419</b>

\*Medical Technology students (Allied Health) are counted as unclassified undergraduates. The other Allied Health students (Nurse Anesthesia and Physician Assistant) are counted in the "Allied Health (Graduate)" category.

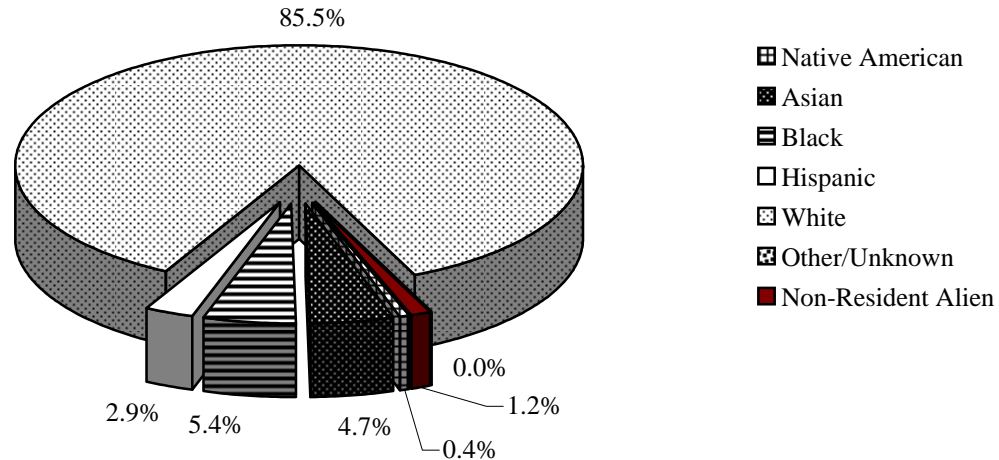
\*\*Full-time equivalent

Source: IPEDS-Fall Enrollment 2004



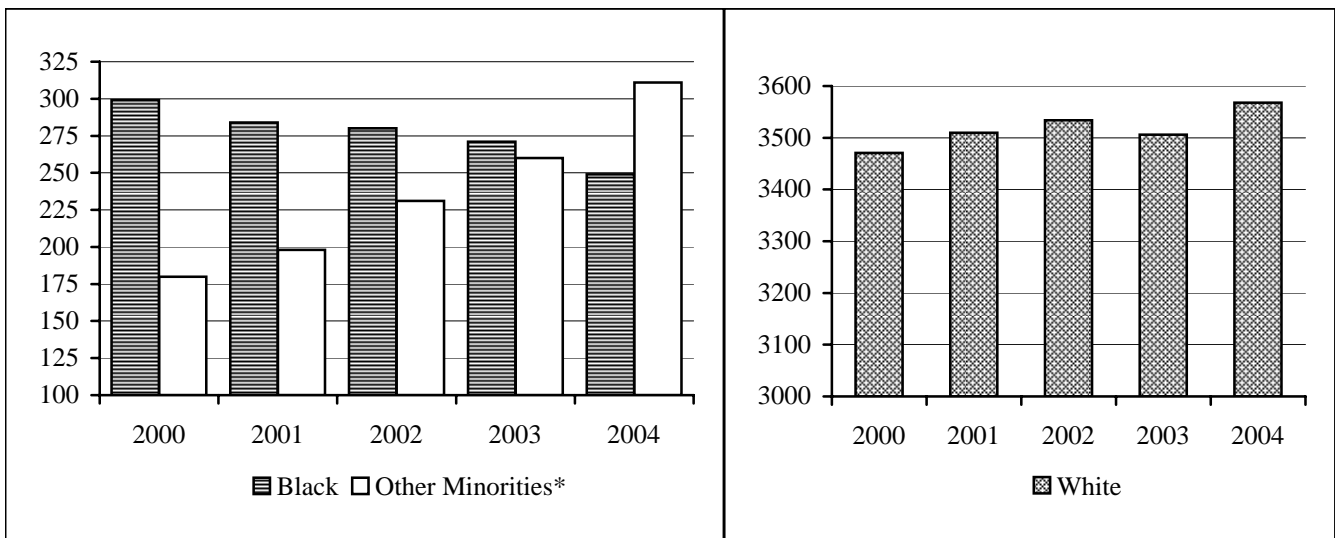
### First-time Freshmen Ethnic Enrollment, Fall 2004

Ethnicity	Male		Female		Total by Ethnicity	
	#	%	#	%	#	%
Native American	2	0.4%	3	0.5%	5	0.4%
Asian	29	5.2%	24	4.3%	53	4.7%
Black	34	6.1%	26	4.6%	60	5.4%
Hispanic	15	2.7%	17	3.0%	32	2.9%
White	479	85.4%	479	85.5%	958	85.5%
Other/Unknown	0	0.0%	0	0.0%	0	0.0%
Non-Resident Alien	2	0.4%	11	2.0%	13	1.2%
<b>Total by Gender</b>	<b>561</b>	<b>50.0%</b>	<b>560</b>	<b>50.0%</b>	<b>1121</b>	<b>100%</b>



### Undergraduate Ethnic Enrollment, Fall 2000-2004

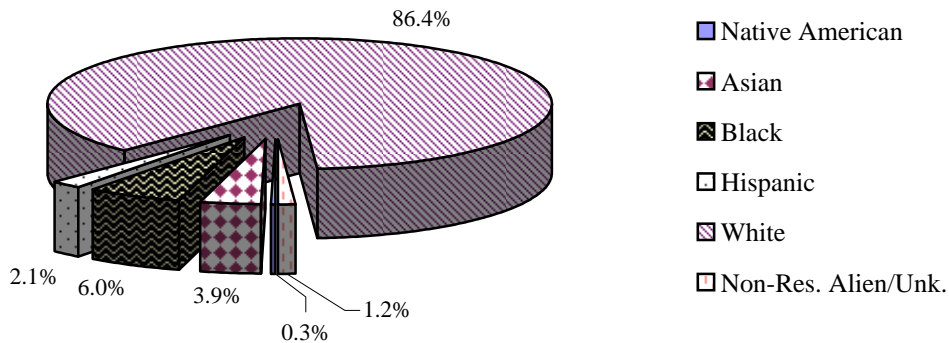
Year	Black	Other Minorities*	Total Minorities	White	% Minority
2000	299	180	479	3471	12.1%
2001	284	198	482	3510	12.1%
2002	280	231	511	3534	12.6%
2003	271	260	531	3506	13.2%
2004	249	311	560	3568	13.6%



\*Includes all non-resident aliens

## Undergraduate Ethnic Enrollment, Fall 2004

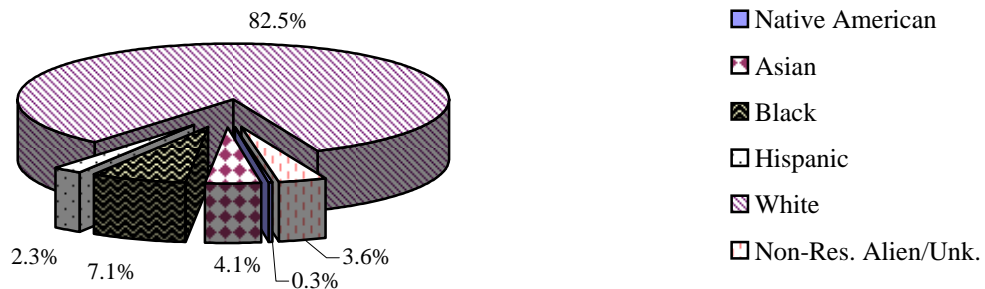
Ethnicity	Male		Female		Total by Ethnicity	
	#	%	#	%	#	%
Native American	6	0.3%	8	0.4%	14	0.3%
Asian	73	3.6%	86	4.1%	159	3.9%
Black	128	6.3%	121	5.8%	249	6.0%
Hispanic	40	2.0%	47	2.2%	87	2.1%
White	1,764	86.8%	1,804	86.1%	3,568	86.4%
Non-Res. Alien/Unk.	22	1.1%	29	1.4%	51	1.2%
<b>Total by Gender</b>	<b>2,033</b>	<b>49.2%</b>	<b>2,095</b>	<b>50.8%</b>	<b>4,128</b>	<b>100.0%</b>



## University Ethnic Enrollment\*, Fall 2004

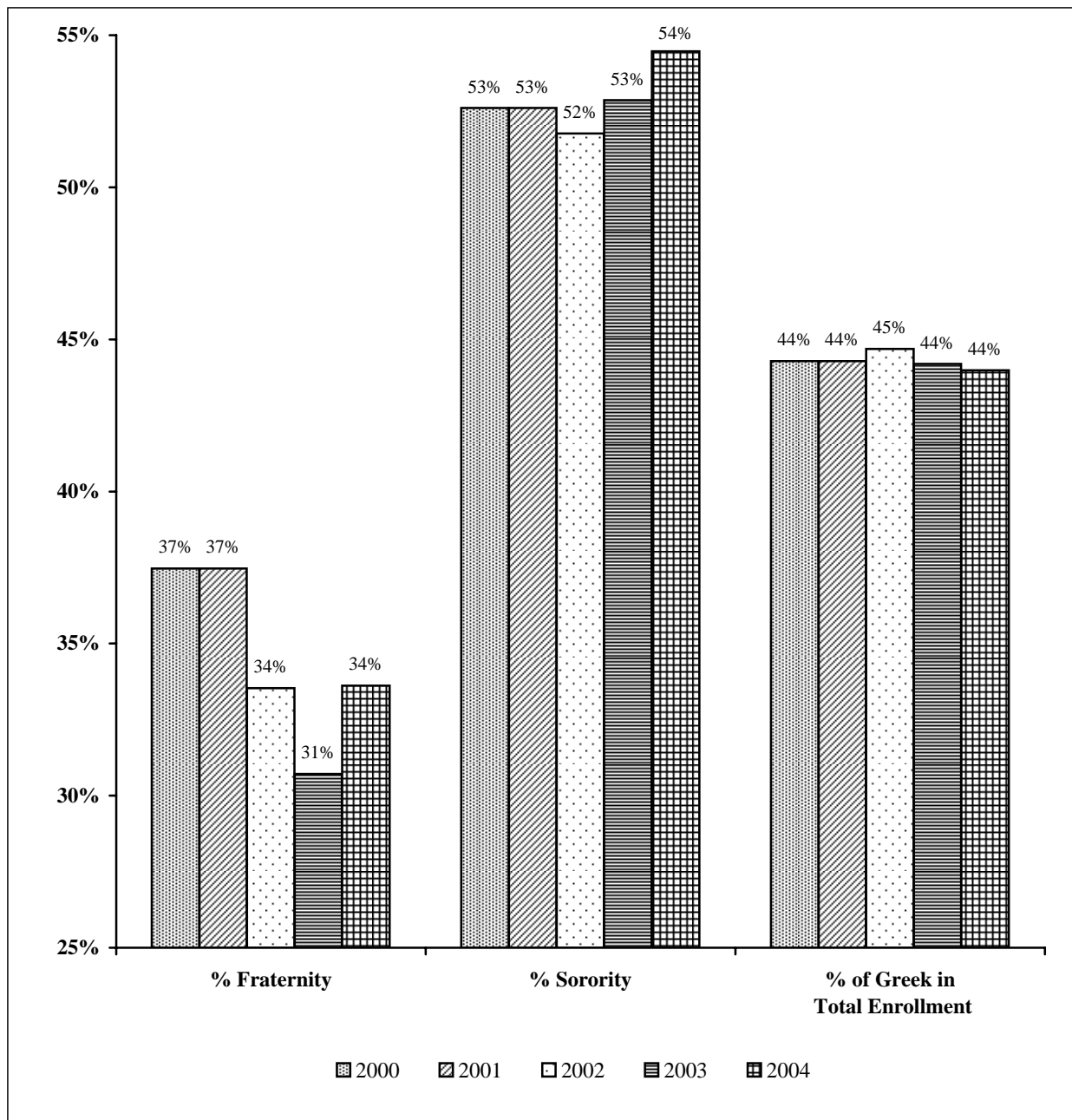
Ethnicity	Male		Female		Total by Ethnicity	
	#	%	#	%	#	%
Native American	9	0.1%	12	0.2%	21	0.3%
Asian	139	2.1%	130	2.0%	269	4.1%
Black	213	3.3%	247	3.8%	460	7.1%
Hispanic	77	1.2%	75	1.2%	152	2.3%
White	2773	42.6%	2595	39.9%	5368	82.5%
Non-Res. Alien/Unk.	126	1.9%	108	1.7%	234	3.6%
<b>Total by Gender</b>	<b>3337</b>	<b>51.3%</b>	<b>3167</b>	<b>48.7%</b>	<b>6504</b>	<b>100.0%</b>

\*Includes all schools and programs based on IPEDS - Fall Enrollment 2004



## Undergraduate Greek Affiliation, Spring 2000-2004

Year	Male Enrollment		Female Enrollment		Total Greek	Percent of Greek in Total Enrollment
	Fraternity	Total (%)	Sorority	Total (%)		
2000	707	1887 (37%)	1049	1994 (53%)	1756	44%
2001	707	1931 (37%)	1024	2034 (50%)	1731	45%
2002	656	1956 (34%)	1052	2032 (52%)	1708	45%
2003	589	1918 (31%)	1070	2024 (53%)	1659	44%
2004	642	1910 (34%)	1102	2023 (54%)	1744	44%

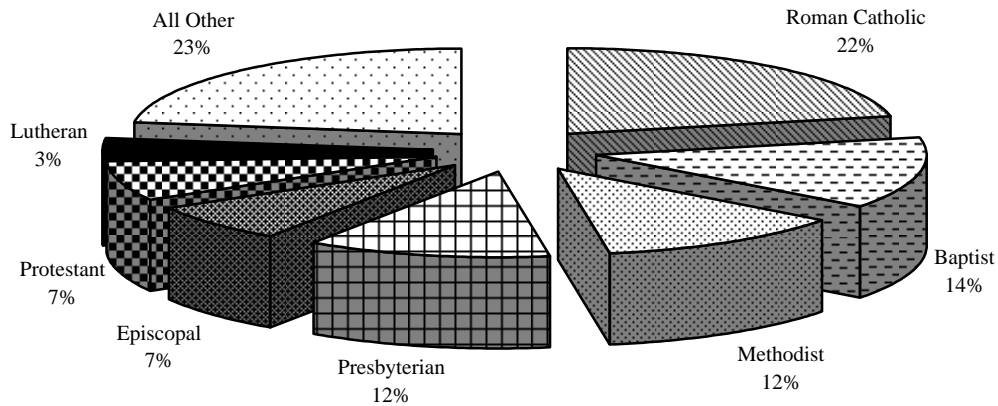




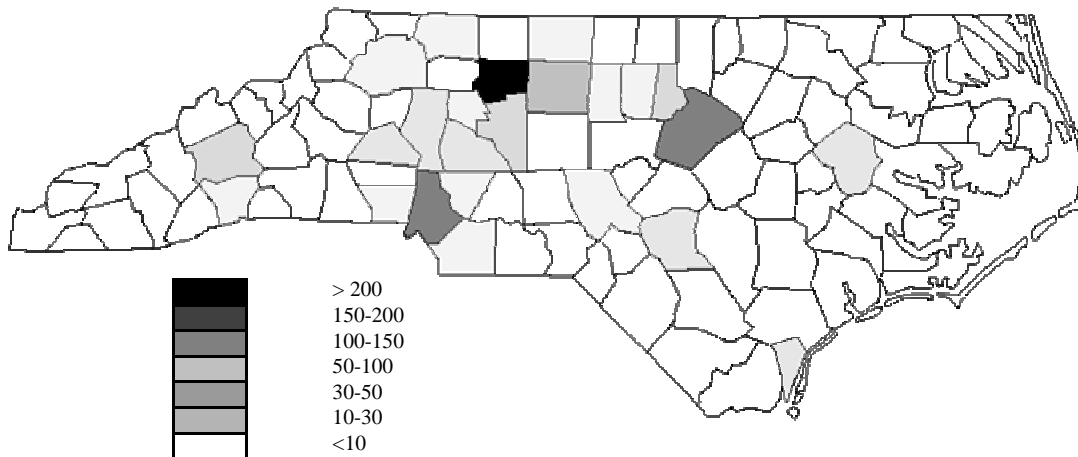
## Undergraduate Religious Preference, Fall 2000-2004

	Fall 2000	Fall 2001	Fall 2002	Fall 2002	Fall 2004
Not Reported	4.2%	7.3%	8.8%	8.8%	10.5%
Baptist	14.8%	14.1%	14.7%	14.7%	13.5%
Buddhist	0.2%	0.1%	0.1%	0.1%	0.2%
Christian Scientist	0.2%	0.2%	0.2%	0.2%	0.2%
Episcopal	7.7%	7.5%	7.2%	7.2%	7.2%
Friends	0.2%	0.2%	0.3%	0.3%	0.2%
Greek Orthodox	0.4%	0.3%	0.4%	0.4%	0.7%
Hindu	0.4%	0.4%	0.5%	0.5%	0.6%
Jewish	1.1%	1.3%	1.5%	1.5%	1.7%
Lutheran	3.8%	3.9%	3.8%	3.8%	3.1%
Methodist	13.6%	13.5%	13.0%	13.0%	12.2%
Moravian	0.4%	0.4%	0.4%	0.4%	0.3%
Mormon	0.2%	0.2%	0.2%	0.2%	0.2%
Moslem	0.3%	0.4%	0.4%	0.4%	0.3%
No Preference	6.4%	4.6%	3.1%	3.1%	2.6%
Presbyterian	12.6%	12.1%	12.0%	12.0%	12.1%
Protestant	6.7%	7.3%	7.2%	7.2%	7.5%
Roman Catholic	21.7%	21.3%	21.2%	21.2%	21.7%
United Church of Christ	1.4%	1.3%	1.4%	1.4%	1.3%
Unitarian	0.2%	0.2%	0.2%	0.2%	0.3%
Other	3.6%	3.6%	3.5%	3.5%	3.8%
All Other	19.1%	20.3%	21.0%	21.0%	22.9%

## Religious Preference, Fall 2004



## North Carolina Undergraduate Students by County of Residence, Fall 2004

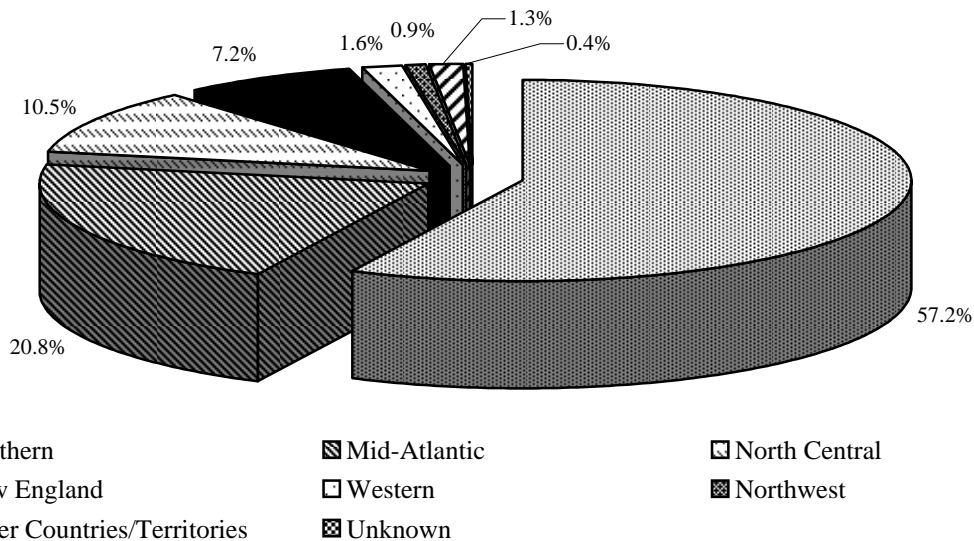


Alamance	18	Cumberland	24	Johnston	3	Randolph	7
Alexander	2	Currituck	1	Jones	1	Richmond	0
Alleghany	0	Dare	4	Lee	5	Robeson	3
Anson	0	Davidson	31	Lenoir	4	Rockingham	11
Ashe	2	Davie	14	Lincoln	6	Rowan	20
Avery	1	Duplin	0	Macon	4	Rutherford	0
Beaufort	2	Durham	33	Madison	3	Sampson	1
Bertie	0	Edgecombe	2	Martin	1	Scotland	5
Bladen	0	Forsyth	237	McDowell	1	Stanly	7
Brunswick	5	Franklin	1	Mecklenburg	116	Stokes	9
Buncombe	32	Gaston	19	Mitchell	4	Surry	19
Burke	9	Gates	0	Montgomery	9	Swain	0
Cabarrus	18	Graham	1	Moore	14	Transylvania	2
Caldwell	3	Granville	5	Nash	8	Tyrrell	0
Camden	0	Greene	0	New Hanover	23	Union	14
Carteret	1	Guilford	67	Northampton	0	Vance	2
Caswell	0	Halifax	3	Onslow	9	Wake	141
Catawba	26	Harnett	6	Orange	17	Warren	0
Chatham	2	Haywood	4	Pamlico	1	Washington	1
Cherokee	3	Henderson	10	Pasquotank	4	Watauga	6
Chowan	1	Hertford	1	Pender	2	Wayne	7
Clay	0	Hoke	0	Perquimans	0	Wilkes	18
Cleveland	8	Hyde	1	Person	0	Wilson	2
Columbus	4	Iredell	25	Pitt	20	Yadkin	7
Craven	3	Jackson	0	Polk	1	Yancey	2

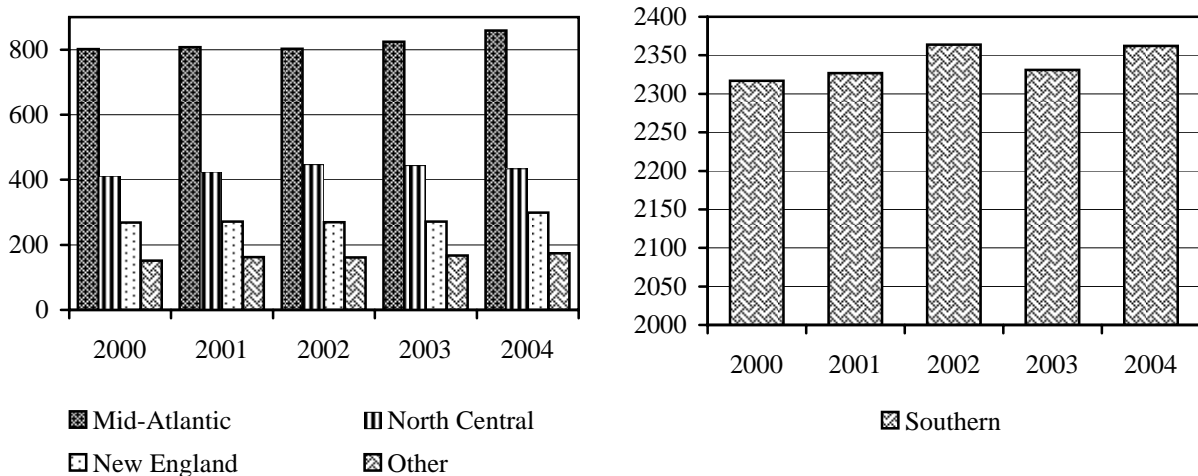
### Undergraduate Geographical Distribution by Region, Fall 2000-2004

Region	2000	%	2001	%	2002	%	2003	%	2004	%
Southern	2,317	58.7%	2,327	58.3%	2,364	58.4%	2,331	57.7%	2,362	57.2%
Mid-Atlantic	802	20.3%	808	20.2%	803	19.9%	824	20.4%	859	20.8%
North Central	411	10.4%	424	10.6%	447	11.1%	444	11.0%	434	10.5%
New England	269	6.8%	271	6.8%	270	6.7%	271	6.7%	299	7.2%
Western	80	2.0%	77	1.9%	66	1.6%	67	1.7%	67	1.6%
Northwest	24	0.6%	35	0.9%	33	0.8%	38	0.9%	39	0.9%
Other Countries/Territories	25	0.6%	37	0.9%	40	1.0%	45	1.1%	52	1.3%
Unknown	22	0.6%	13	0.3%	22	0.5%	17	0.4%	16	0.4%
<b>Total</b>	<b>3,950</b>		<b>3,992</b>		<b>4,045</b>		<b>4,037</b>		<b>4,128</b>	

### Undergraduate Geographical Distribution by Region, (%) Fall 2004



### Undergraduate Geographical Distribution by Region, Fall 2000-2004

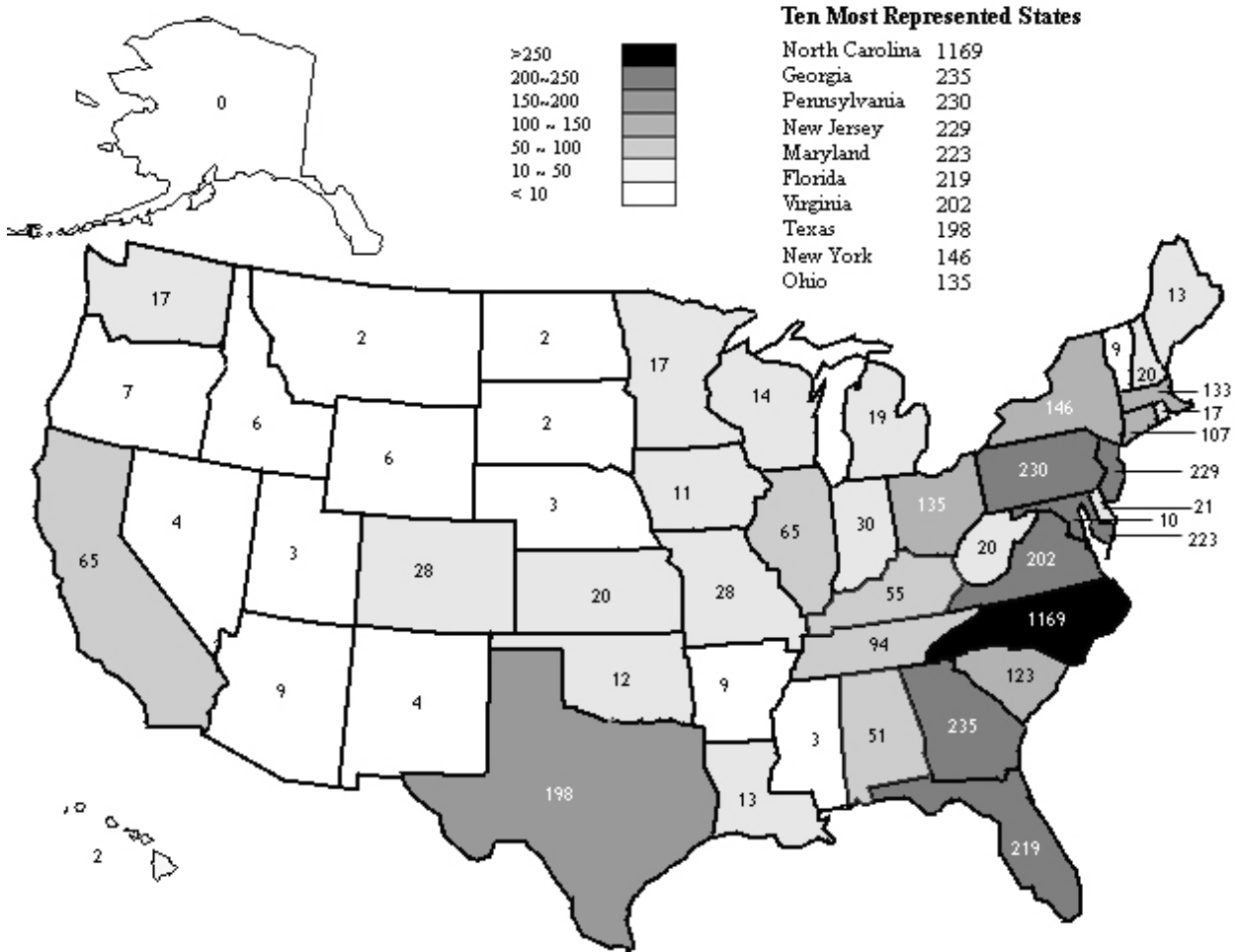


## Undergraduate Geographical Distribution by Region & State, Fall 2000-2004

		2000-01	2001-02	2002-03	2003-04	2004-05	2004-2005 Totals
<b>Southern</b>	Alabama	39	45	50	45	51	
	Florida	222	228	221	212	219	
	Georgia	195	202	191	212	235	
	Kentucky	46	35	43	49	55	
	Louisiana	20	12	11	11	13	
	Mississippi	8	6	3	4	3	
	North Carolina	1054	1048	1175	1167	1169	(28% of total enrollment)
	South Carolina	188	189	155	144	123	
	Tennessee	120	126	99	89	94	
	Texas	175	199	189	191	198	
	Virginia	250	237	227	207	202	2,362
<b>Middle Atlantic</b>	Delaware	25	21	24	25	21	
	District of Columbia	13	12	9	7	10	
	Maryland	175	191	214	212	223	
	New Jersey	216	224	213	236	229	
	New York	163	149	140	135	146	
	Pennsylvania	210	211	203	209	230	859
<b>New England</b>	Connecticut	101	100	100	99	107	
	Maine	14	15	14	13	13	
	Massachusetts	106	108	105	112	133	
	New Hampshire	17	19	18	17	20	
	Rhode Island	17	16	18	18	17	
	Vermont	14	13	15	12	9	299
<b>Northwest</b>	Alaska	0	1	2	2	0	
	Idaho	1	4	3	4	6	
	Montana	0	1	1	3	2	
	Nevada	1	3	3	3	4	
	Oregon	8	8	5	4	7	
	Utah	3	3	1	2	3	
	Washington	11	15	18	20	17	39
<b>North Central</b>	Arizona	4	8	9	8	9	
	Arkansas	8	8	10	7	9	
	Colorado	24	23	21	26	28	
	Illinois	63	66	74	70	65	
	Indiana	22	26	30	28	30	
	Iowa	8	10	11	8	11	
	Kansas	16	20	18	19	20	
	Michigan	21	20	19	15	19	
	Minnesota	14	14	14	18	17	
	Missouri	37	37	45	43	28	
	Nebraska	3	5	4	3	3	
	New Mexico	3	1	3	3	4	
	North Dakota	1	2	3	1	2	
	Ohio	111	116	120	132	135	
	Oklahoma	14	16	15	17	12	
	South Dakota	2	3	3	1	2	
	West Virginia	42	30	32	25	20	
Wisconsin	18	16	12	14	14		
Wyoming	0	3	4	6	6	434	
<b>Western</b>	California	76	73	65	66	65	
	Hawaii	4	4	1	1	2	67
<b>Territories</b>		2	1	3	4	1	
		0	0	0	0	0	
<b>Unknown</b>		22	13	22	17	16	
		0	0	0	0	0	
<b>Other Countries</b>		23	36	37	41	51	68
<b>Total</b>		<b>3,950</b>	<b>3,992</b>	<b>4,045</b>	<b>4,037</b>	<b>4,128</b>	

Note: Regions are defined by Accrediting Agencies

## Undergraduates from the United States, 2000-2004

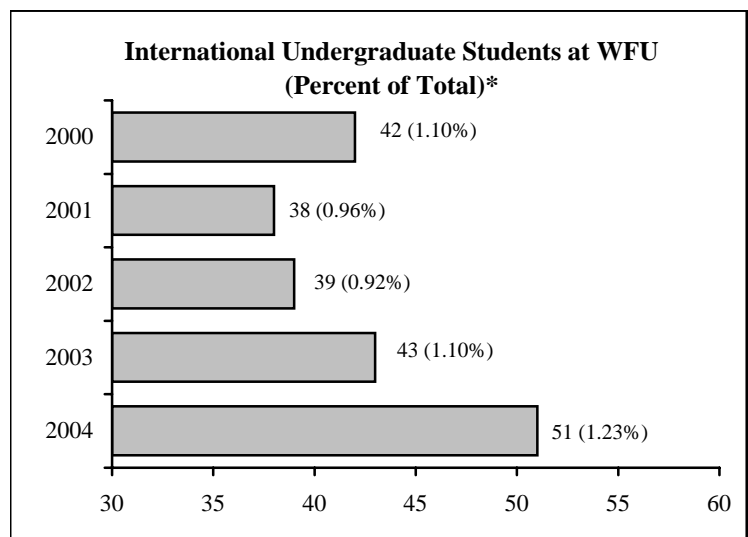


## Undergraduate International Students

### Countries Represented\*

- |           |                     |
|-----------|---------------------|
| Bermuda   | Lithuania           |
| Bolivia   | Malawi              |
| Canada    | Netherlands         |
| Ecuador   | Panama              |
| France    | South Africa        |
| Germany   | Spain               |
| Guatemala | Sweden              |
| India     | Taiwan              |
| Israel    | Trinidad and Tobago |
| Italy     | United Kingdom      |
| Japan     | Vietnam             |
| Korean    | Yugoslavia (former) |
| Kuwait    |                     |

\*Source: Center for International Studies



## Total Number of Degrees Granted, 1985-2004

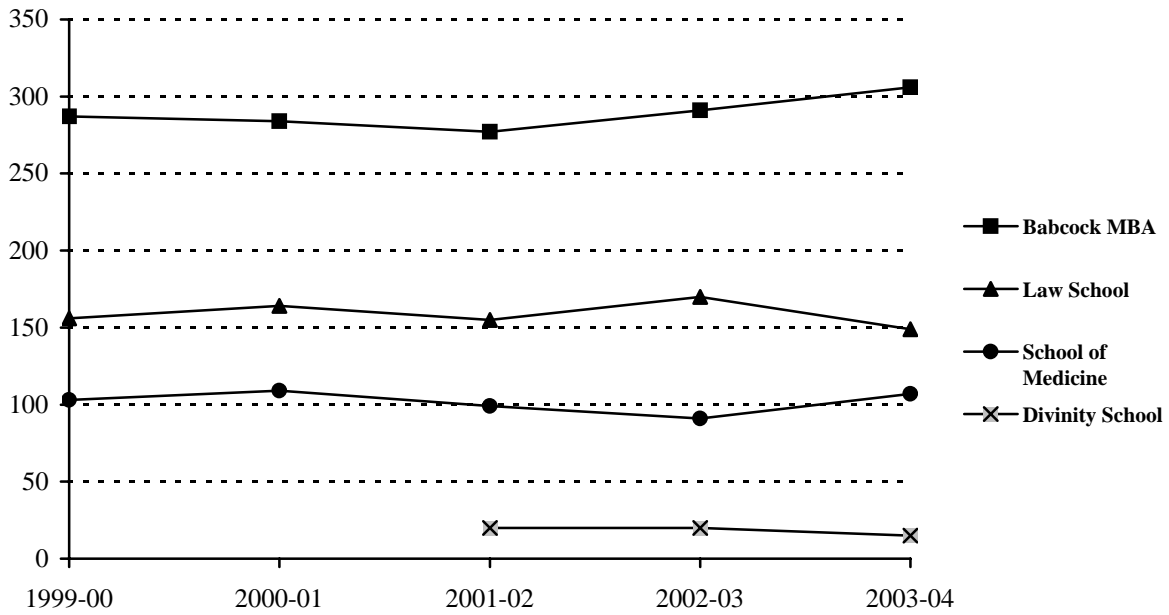
Year	Undergraduate	Master	Divinity	Doctorate	Medicine	Law	Total	Cumulative Total	Honorary
1984-85	727	190	0	7	106	169	1,199	33,895	6
1985-86	687	219	0	10	104	160	1,180	35,075	5
1986-87	758	192	0	14	104	164	1,232	36,307	7
1987-88	738	205	0	26	106	159	1,234	37,541	5
1988-89	858	200	0	9	98	158	1,323	38,864	9
1989-90	843	271	0	14	99	148	1,375	40,239	7
1990-91	782	262	0	16	101	155	1,316	41,555	5
1991-92	819	304	0	19	99	147	1,388	42,943	5
1992-93	869	326	0	18	107	160	1,480	44,423	5
1993-94	817	315	0	16	91	150	1,389	45,812	4
1994-95	829	337	0	17	114	149	1,446	47,258	6
1995-96	763	333	0	23	96	159	1,374	48,632	8
1996-97	887	399	0	20	105	155	1,566	50,198	6
1997-98	898	432	0	32	106	145	1,613	51,811	6
1998-99	878	439	0	30	110	157	1,614	53,425	5
1999-00	884	454	0	28	103	150	1,619	55,044	7
2000-01	901	469	0	25	109	153	1,657	56,701	3
2001-02	906	460	20	25	99	155	1,645	58,346	5
2002-03	916	477	20	35	91	159	1,698	60,044	5
2003-04	1000	547	15	39	107	149	1,857	61,901	5

## Number and Type of Degrees Granted, 2003 and 2004

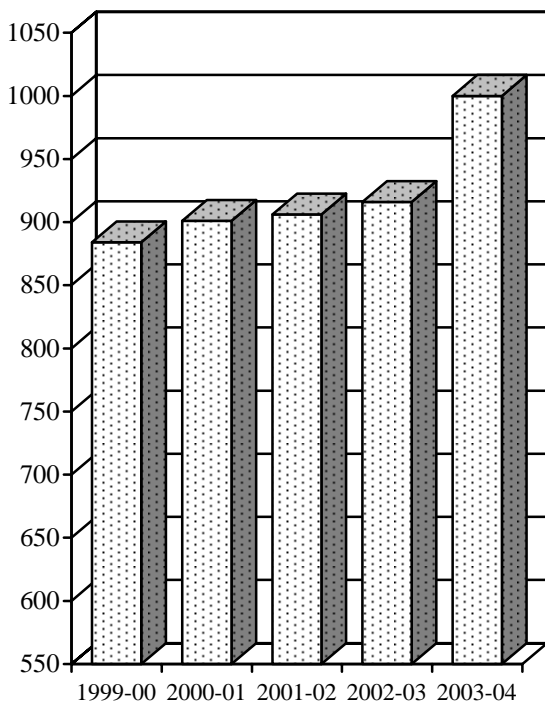
Department/Program	2002-2003									2003-2004								
	Bachelor*			Master			Doctorate			Bachelor*			Master			Doctorate		
	M	F	Total	M	F	Total	M	F	Total	M	F	Total	M	F	Total	M	F	Total
Accountancy	6	12	18	25	27	52				8	5	13	31	16	47			
Analytical Finance	33	7	40							43	11	54						
Anthropology	6	8	14							4	12	16						
Art History	1	5	6							0	7	7						
Biology	37	33	70	4	3	7	1	0	1	22	42	64	1	3	4	2	0	2
Business	56	52	108							73	44	117						
Chemistry	12	8	20	1	2	3	2	1	3	13	14	27	1	3	4	2	1	3
Classical Studies										0	1	1						
Communication	44	65	109	3	6	9				44	56	100	2	11	13			
Computer Science	14	3	17	5	3	8				9	2	11	10	2	12			
Counseling				1	14	15							3	13	16			
Dentistry										1		1						
Economics	23	10	33							32	14	46						
Education	4	7	11	5	21	26				3	15	18	8	25	33			
Engineering																		
English	19	33	52	3	4	7				28	43	71	1	4	5			
French	1	6	7								7	7						
German	0	3	3															
Health & Exercise Science	10	30	40	2	5	7				11	29	40	2	5	7			
History	32	22	54	1	0	1				38	23	61						
Information Systems	17	6	23							16		16						
Latin	1	1	2															
Liberal Studies				4	9	13							4	5	9			
Mathematical Business	0	3	3							0	1	1						
Mathematical Economics	8	2	10							5	5	10						
Mathematics	4	8	12	3	2	5				5	10	15	1	3	4			
Medical Technology	0	1	1															
Music History/Theory/Composition										2	2	4						
Music Performance	1	4	5							2	1	3						
Philosophy	4	2	6							10	1	11						
Physics	2	5	7				2	1	3	7	2	9	0	1	1	3	2	5
Political Science	38	50	88							53	46	99						
Psychology	23	59	82	2	8	10				26	68	94	2	10	12			
Religion	5	9	14	0	1	1				7	8	15	1	2	3			
Russian	1	0	1															
Sociology	12	18	30							12	24	36						
Spanish	1	16	17							4	11	15						
Speech Comm. and Theatre Arts										1	0	1						
Studio Art	2	7	9							3	8	11						
Theatre	1	3	4							1	5	6						
<b>Sub-Total</b>	418	498	916	59	105	164	5	2	7	483	517	1000	67	103	170	7	3	10
Biochemistry/Molecular Biology							4	4					1	1	2	2		
Biomedical Engineering							1	1							3	3		
Cancer Biology							2	2	4					1	1	2	2	
Clinical Epidemiology and Health Services Research				3	3	6							4	4	8			
Microbiology/Immunology							2	2	4							1	2	3
Molecular/Cellular Pathobiology				0	3	3		2	2							1	1	2
Molecular Genetics				1	0	1	2	1	3							1		1
Molecular Medicine																2	2	4
Neurobiology/Anatomy							1	1	2							2	1	3
Neuroscience				0	1	1	1	1	2							1	3	4
Pharmacology							4	1	5				1		1	3	1	4
Physiology							0	1	1								1	1
Physician Assistant													13	34	47			
<b>Sub-Total</b>				4	7	11	13	15	28				18	40	58	18	11	29
Divinity				10	10	20							11	4	15			
Law				5	6	11	86	73	159				11	2	13	75	74	149
MBA				225	66	291							236	70	306			
Medicine							52	39	91							65	42	107
<b>Grand Total</b>	418	498	916	303	194	497	156	129	285	483	517	1000	343	219	562	165	130	295

\*Degrees are conferred based on the field of the primary major only. For an analysis of double majors, see page 27. For administrative purposes, a student with two majors must designate one of the two fields as the primary major.

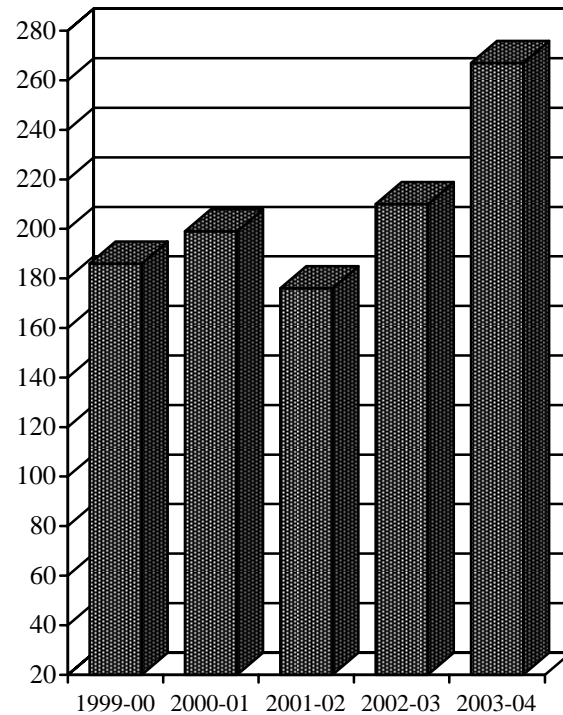
## Number and Type of Degrees Granted, 2000-2004



### Undergraduate Degrees



### Graduate Degrees

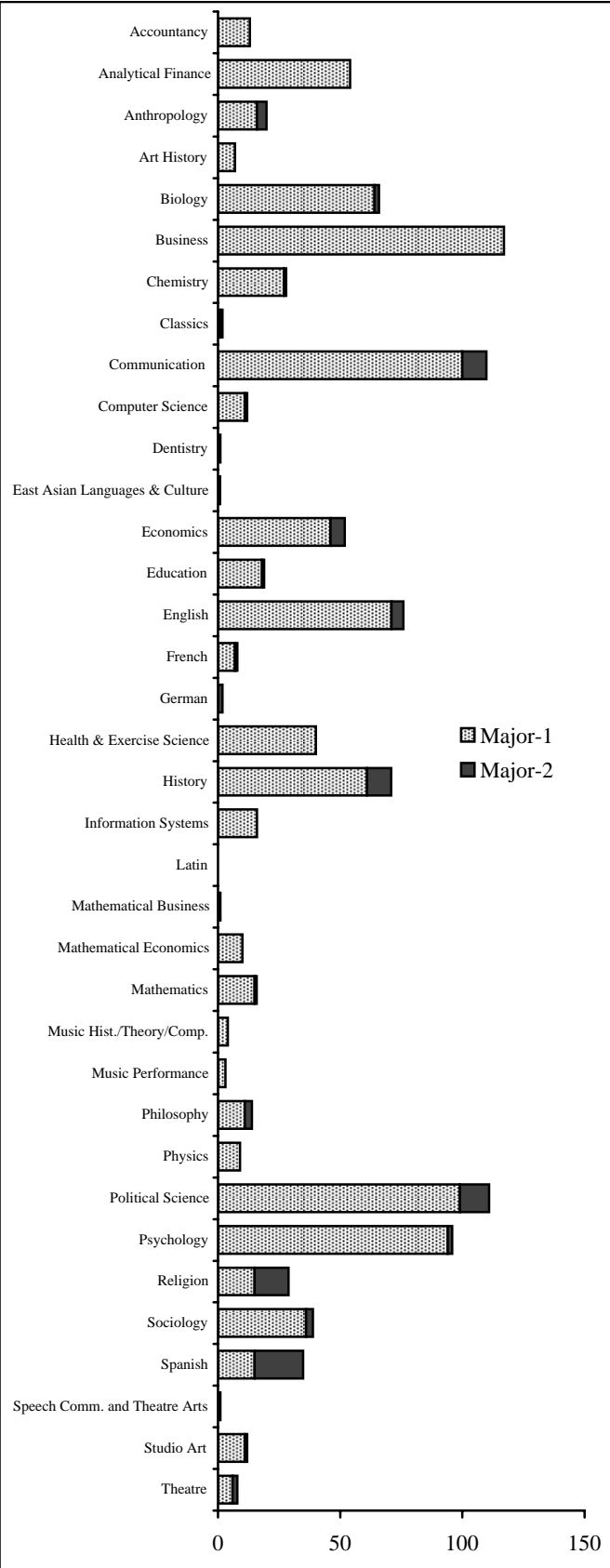


Note: Physician Assistant program awarded Master's degrees for the first time in 2003-2004



## Graduates by Double Major, 2003-2004

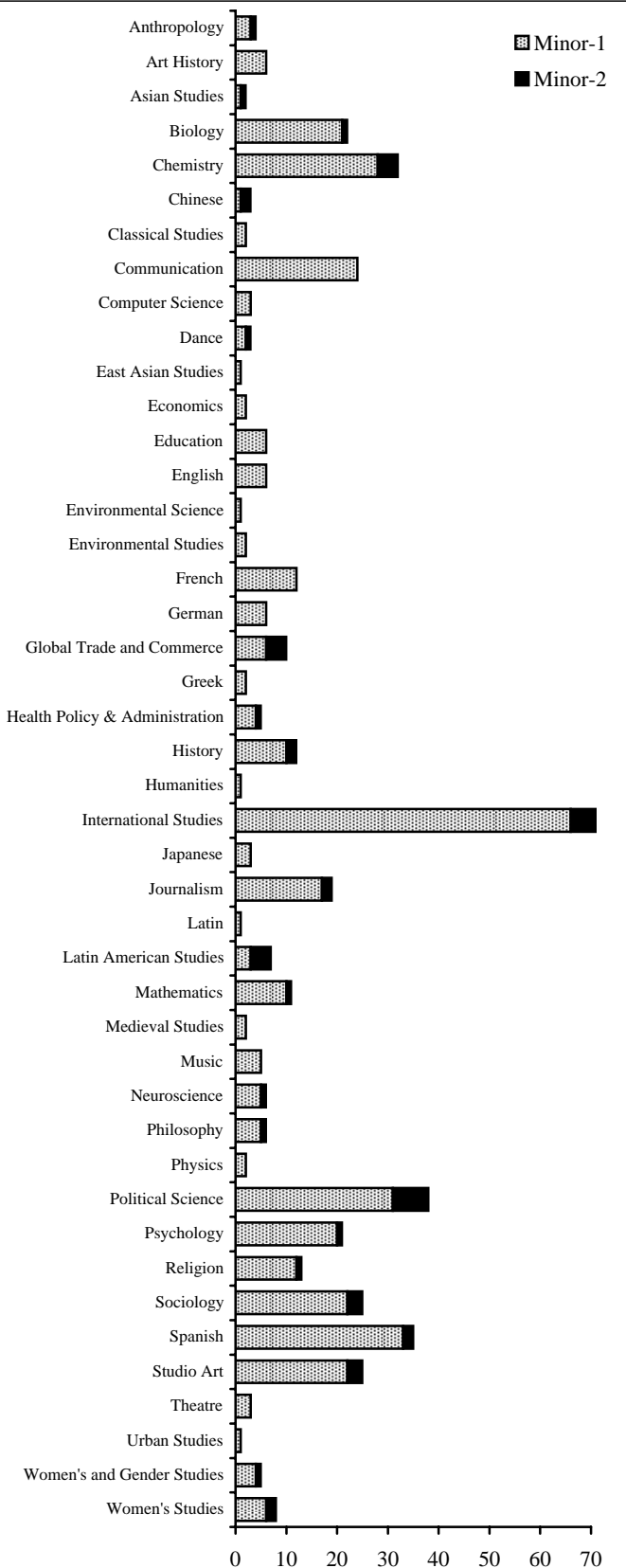
Program	Major-1	Major-2	Total
Accountancy	13	0	13
Analytical Finance	54	0	54
Anthropology	16	4	20
Art History	7	0	7
Biology	64	2	66
Business	117	0	117
Chemistry	27	1	28
Classics	1	1	2
Communication	100	10	110
Computer Science	11	1	12
Dentistry	1	0	1
East Asian Languages & Culture	0	1	1
Economics	46	6	52
Education	18	1	19
English	71	5	76
French	7	1	8
German	0	2	2
Health & Exercise Science	40	0	40
History	61	10	71
Information Systems	16	0	16
Latin	0	0	0
Mathematical Business	1	0	1
Mathematical Economics	10	0	10
Mathematics	15	1	16
Music Hist./Theory/Comp.	4	0	4
Music Performance	3	0	3
Philosophy	11	3	14
Physics	9	0	9
Political Science	99	12	111
Psychology	94	2	96
Religion	15	14	29
Sociology	36	3	39
Spanish	15	20	35
Speech Comm. and Theatre Arts	1	0	1
Studio Art	11	1	12
Theatre	6	2	8
<b>TOTAL</b>	<b>1000</b>	<b>103</b>	<b>1103</b>



Note: For administrative purposes, a student with two majors must designate one of the two fields as the primary major.

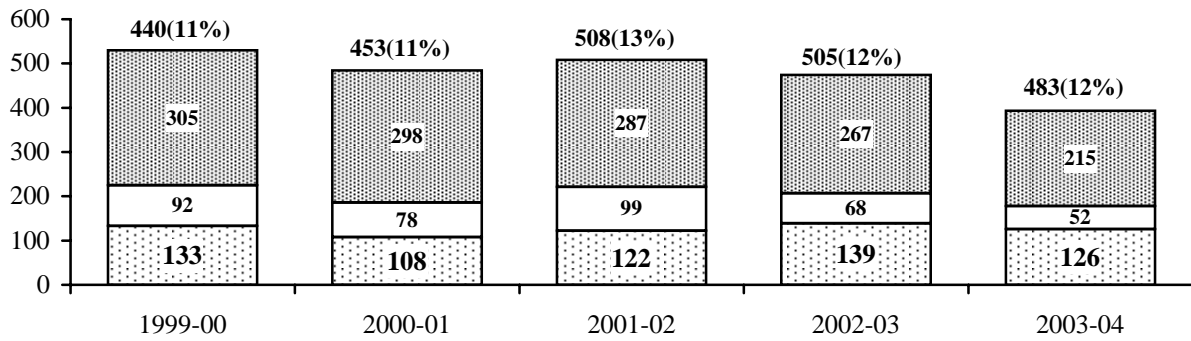
## Graduates by Minor, 2003-2004

Program	Minor-1	Minor-2	Total
Anthropology	3	1	4
Art History	6		6
Asian Studies	1	1	2
Biology	21	1	22
Chemistry	28	4	32
Chinese	1	2	3
Classical Studies	2		2
Communication	24		24
Computer Science	3		3
Dance	2	1	3
East Asian Studies	1		1
Economics	2		2
Education	6		6
English	6		6
Environmental Science	1		1
Environmental Studies	2		2
French	12		12
German	6		6
Global Trade and Commerce	6	4	10
Greek	2		2
Health Policy & Administration	4	1	5
History	10	2	12
Humanities	1		1
International Studies	66	20	86
Japanese	3		3
Journalism	17	2	19
Latin	1		1
Latin American Studies	3	4	7
Mathematics	10	1	11
Medieval Studies	2		2
Music	5		5
Neuroscience	5	1	6
Philosophy	5	1	6
Physics	2		2
Political Science	31	7	38
Psychology	20	1	21
Religion	12	1	13
Sociology	22	3	25
Spanish	33	2	35
Studio Art	22	3	25
Theatre	3		3
Urban Studies	1		1
Women's and Gender Studies	4	1	5
Women's Studies	6	2	8
<b>TOTAL</b>	<b>423</b>	<b>66</b>	<b>489</b>



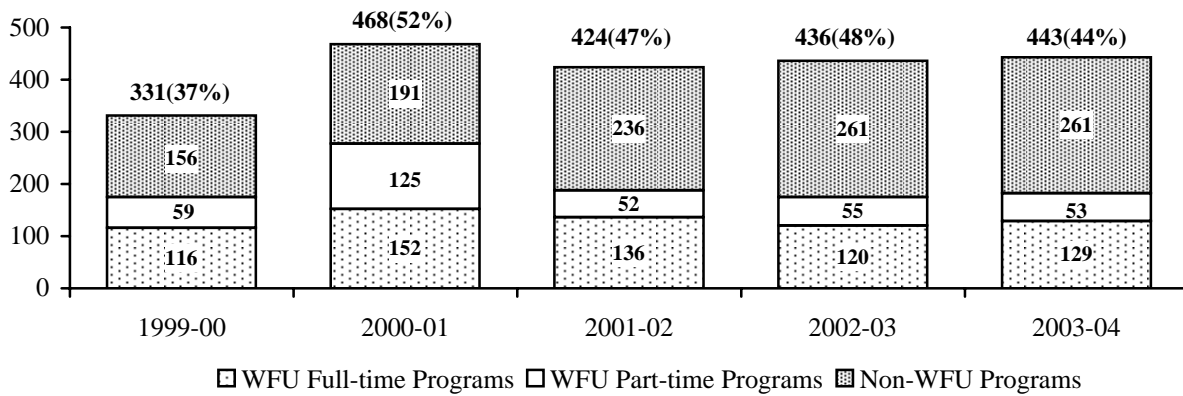
## Undergraduates Receiving Degree Credits Abroad, 2000-2004

( ) = % of total undergraduate population

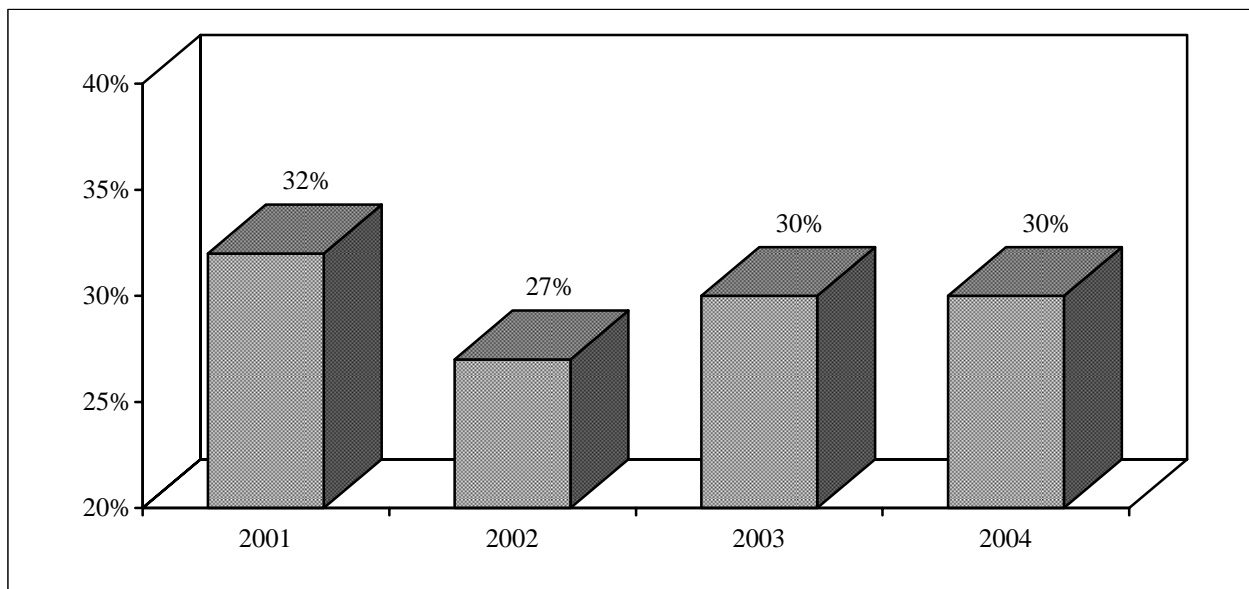


## Senior Graduates Receiving Degree Credits Abroad, 2000-2004

( ) = % of total graduates for that year



## Undergraduates Receiving Academic Distinction\*, 2001-2004

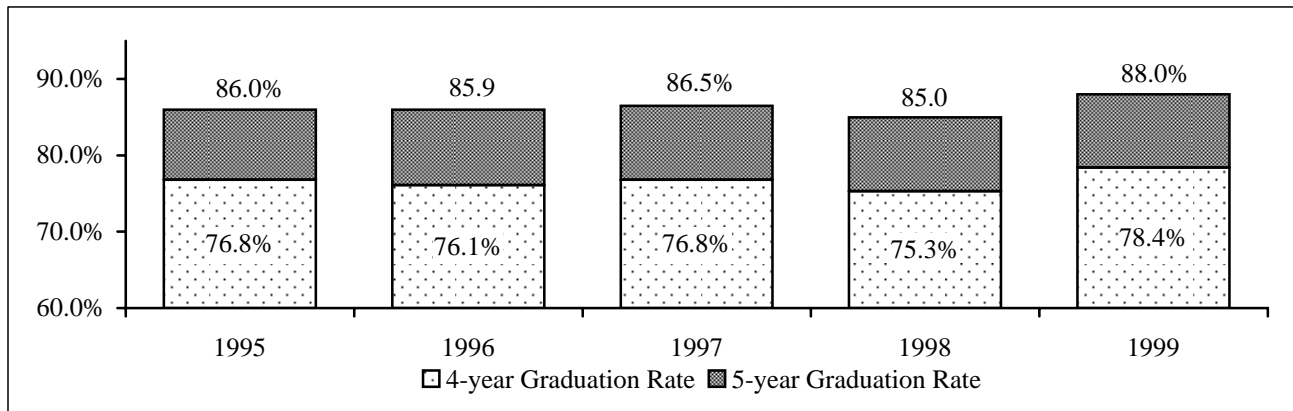


\* Minimum criteria: cum laude - 3.4, magna cum laude - 3.6, summa cum laude - 3.8

## Undergraduate Graduation and Attrition Rates

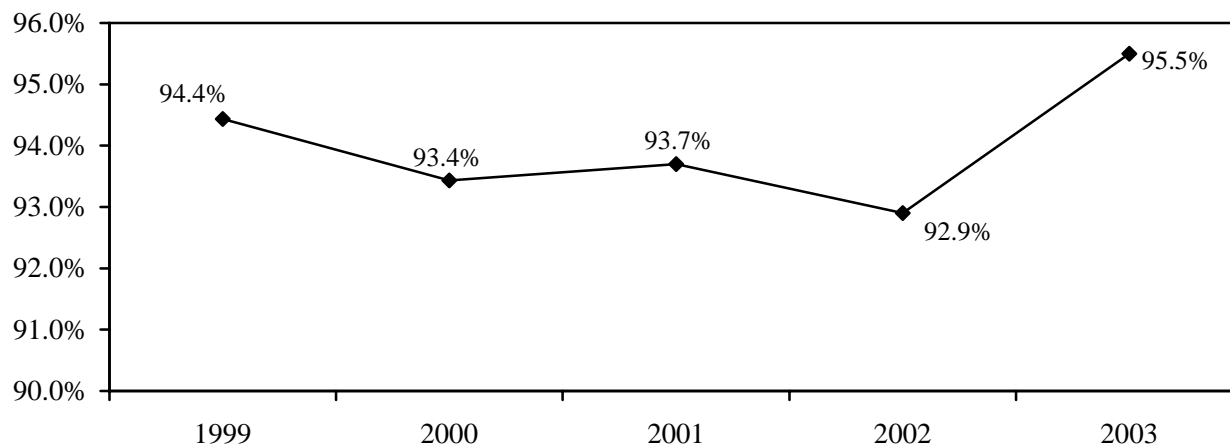
Entering First-time Freshmen, Fall 1995 -1999

Year	Number Entering	Graduated (Within 4 Years)	Graduated (Within 5 Years)	Withdrew or Transferred	Academically Ineligible
1995	962	76.8%	86.0%	11.9%	1.1%
1996	936	76.1%	85.9%	12.1%	0.9%
1997	964	76.8%	86.5%	12.2%	0.4%
1998	991	75.3%	85.0%	12.7%	0.9%
1999	969	78.4%	88.0%	10.3%	1.0%



## First-time Freshmen Retention Rate, 1999-2003

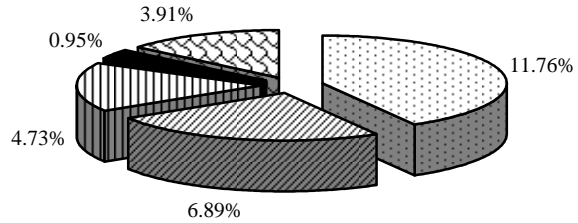
Fall	Total Enrollment	# Returned Following Fall	Retention Rate Following Fall
1999	970	916	94.4%
2000	1020	953	93.4%
2001	983	921	93.7%
2002	999	928	92.9%
2003	1003	958	95.5%



## Placement of 2004 Graduating Class\*

### GRADUATE & PROF. SCHOOLS

Arts and Sciences	11.76%
Law School	6.89%
Medical School	4.73%
Deferring	0.95%
Other	3.91%
<b>Total</b>	<b>28.24%</b>

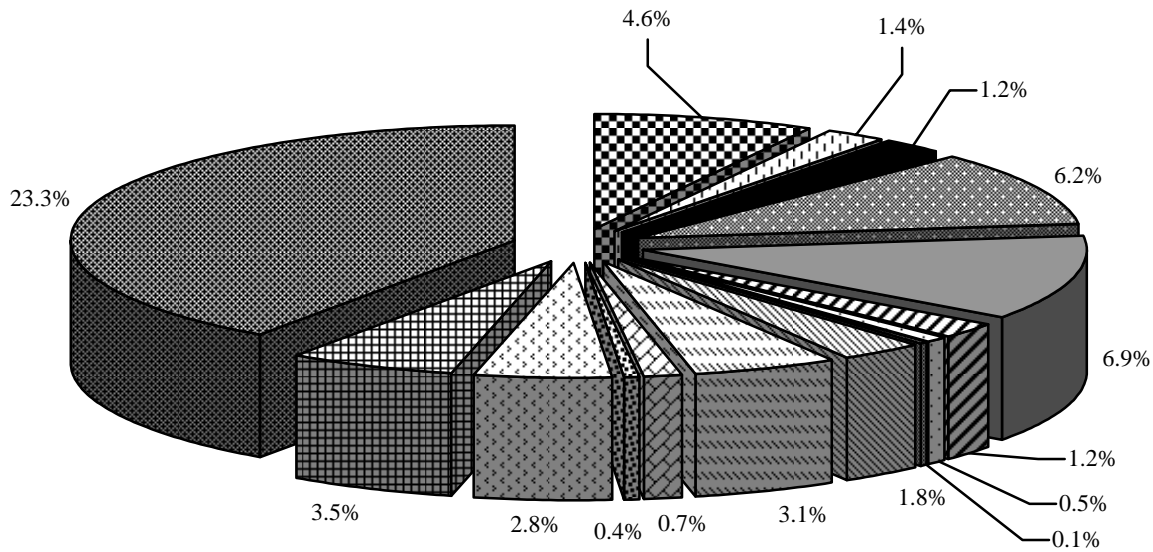


Arts and Sciences
  Law School
  Medical School
  Deferring
  Other

\*Response to Placement Survey six months after graduation (81.59%)--Office of Career Services

Accounting	4.6%	Law	1.8%
Professional Athletics**	1.4%	Management	3.1%
Consulting	1.2%	Media	0.7%
Financial Services	6.2%	Advertising	0.4%
Education/Teaching	6.9%	Research	2.8%
Government/Military	1.2%	Sales/Marketing	3.5%
Education/Administration	0.5%	Other	23.3%
Insurance	0.1%	<b>Total</b>	<b>57.8%</b>

\*\*Does not include coaching

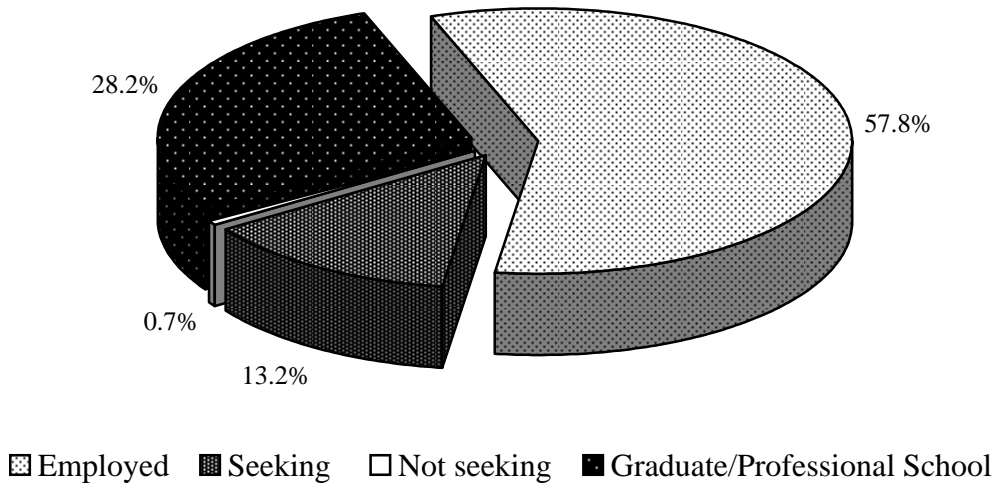


<span style="display: inline-block; width: 10px; height: 10px; border: 1px solid black; background-color: white; margin-right: 5px;"></span> Accounting	<span style="display: inline-block; width: 10px; height: 10px; border: 1px solid black; background-color: white; margin-right: 5px;"></span> Professional Athletics**	<span style="display: inline-block; width: 10px; height: 10px; border: 1px solid black; background-color: white; margin-right: 5px;"></span> Consulting	<span style="display: inline-block; width: 10px; height: 10px; border: 1px solid black; background-color: white; margin-right: 5px;"></span> Financial Services
<span style="display: inline-block; width: 10px; height: 10px; border: 1px solid black; background-color: white; margin-right: 5px;"></span> Education/Teaching	<span style="display: inline-block; width: 10px; height: 10px; border: 1px solid black; background-color: white; margin-right: 5px;"></span> Government/Military	<span style="display: inline-block; width: 10px; height: 10px; border: 1px solid black; background-color: white; margin-right: 5px;"></span> Education/Administration	<span style="display: inline-block; width: 10px; height: 10px; border: 1px solid black; background-color: white; margin-right: 5px;"></span> Insurance
<span style="display: inline-block; width: 10px; height: 10px; border: 1px solid black; background-color: white; margin-right: 5px;"></span> Law	<span style="display: inline-block; width: 10px; height: 10px; border: 1px solid black; background-color: white; margin-right: 5px;"></span> Management	<span style="display: inline-block; width: 10px; height: 10px; border: 1px solid black; background-color: white; margin-right: 5px;"></span> Media	<span style="display: inline-block; width: 10px; height: 10px; border: 1px solid black; background-color: white; margin-right: 5px;"></span> Advertising
<span style="display: inline-block; width: 10px; height: 10px; border: 1px solid black; background-color: white; margin-right: 5px;"></span> Research	<span style="display: inline-block; width: 10px; height: 10px; border: 1px solid black; background-color: white; margin-right: 5px;"></span> Sales/Marketing	<span style="display: inline-block; width: 10px; height: 10px; border: 1px solid black; background-color: white; margin-right: 5px;"></span> Other	

**Placement of 2004 Graduating Class**

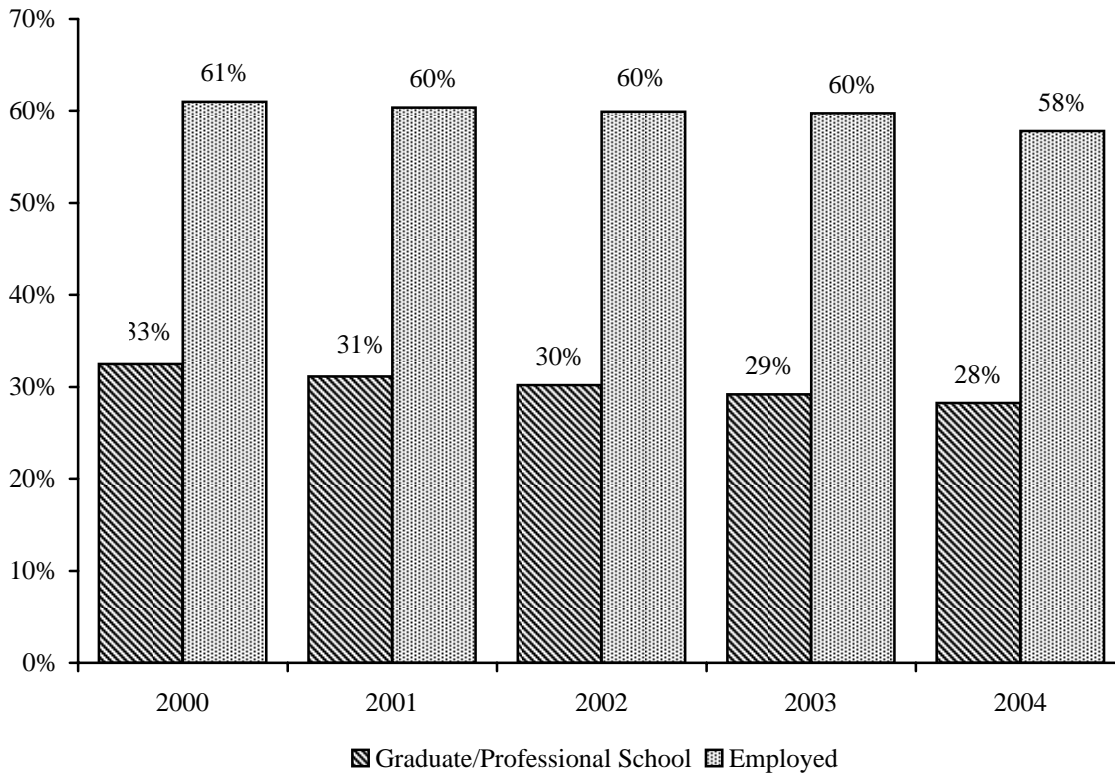
---

**OVERALL PLACEMENT OF CLASS -- 86.1%**



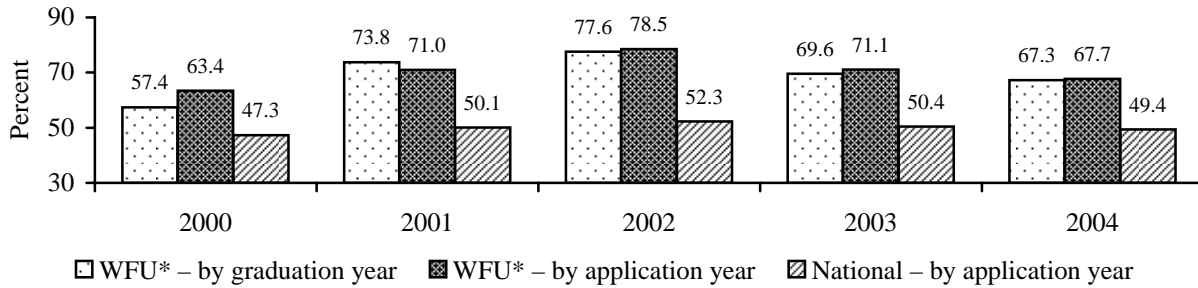
**Placement of Graduating Classes, 2000-2004**

---



## Acceptance Rates to Medical School, 2000-2004

Comparison of WFU Success with National Pool Medical School Students -- Percent Accepted



\*Alumni who applied more than once were counted only once.

Note: 202 of 291 applicants (69.4%) from the 2000-2004 graduation classes were accepted to 67 of the 126 U.S. allopathic medical schools. The four North Carolina medical schools accepted 77 students (38.1% of accepted students) as follows: Wake Forest University School of Medicine – 43; Duke University School of Medicine - 8; University of North Carolina at Chapel Hill - 15; and Brody School of Medicine of East Carolina University – 11.

## Medical School Matriculations, 2000-2004

Baylor College of Medicine	University of Alabama
Boston University	University of Arkansas
Brody at East Carolina University	University of Chicago
Dartmouth Medical School	University of Cincinnati
Drexel University	University of Connecticut
Duke University	University of Florida
East Tennessee State University	University of Kansas
Eastern Virginia Medical School	University of Kentucky
Emory University	University of Louisville
Florida State University	University of Maryland
George Washington University	University of Massachusetts
Georgetown University	University of Miami
Harvard University	University of Minnesota
Jefferson Medical College	University of Nebraska
Johns Hopkins University	University of North Carolina at Chapel Hill
Louisiana State University in New Orleans	University of Pennsylvania
Loyola University Chicago	University of Rochester
Marshall University	University of South Alabama
Medical College of Georgia	University of South Carolina
Medical University of South Carolina	University of South Florida
Mercer University	University of Southern California
Mount Sinai	University of Tennessee
New Jersey Medical School	University of Texas - Galveston
New York Medical College	University of Texas - San Antonio
Northeastern Ohio Universities	University of Texas - Southwestern Medical Center
Northwestern University	University of Virginia
Ohio State University	University of Washington
Ponce School of Medicine	Vanderbilt University
Saint Louis University	Virginia Commonwealth University
Stony Brook University	Wake Forest University
SUNY at Buffalo & Biomedical Sciences	Washington University in St. Louis
Temple University	West Virginia University
Tulane University	Yale University
Uniformed Services University	

## Applicants to Accredited Law Schools, 2002-2003

	WFU		National	
	Seniors	All	Seniors	All
Number of Applicants	87	234	32021	99504
Average LSAT				
Score	157.5	157.3	152.6	152.2
Percentile*	73rd	73rd	56th	54th
Undergraduate GPA	3.16	3.1	3.31	3.19
Admitted to ABA Law School(s)				
Number	67	177	20904	56825
Percent	77%	76%	65%	57%
Enrolled at a Law School				
Number	58	146	17784	46176
Percent	67%	62%	56%	46%
Admissions per Applicant	2.17	1.86	1.68	1.33

\*Estimated

## Law Schools Admitting Wake Forest Applicants, 2002-2003

An asterisk (\*) indicates that a student from Wake Forest enrolled at the school.

American University*	New York University School of Law	University of Denver College of Law*
Appalachian School of Law	North Carolina Central University*	University of Detroit - Mercy
Ave Maria School of Law	Northern Kentucky University Chase	University of District of Columbia
Benjamin Cardozo School of Law*	Northwestern University	University of Georgia*
Boston College Law School	Nova Southeastern University	University of Idaho
Boston University	Ohio Northern University	University of Illinois
Brooklyn Law School*	Ohio State University*	University of Kansas*
Campbell University School of Law*	Pepperdine University	University of Kentucky*
Capital University Law School*	Regent University School of Law	University of Louisville - Brandeis
Case Western Reserve University*	Roger Williams University School of Law	University of Maryland
Catholic University of America	Saint John's University School of Law	University of Miami
Chicago-Kent College of Law	Saint Louis University	University of Michigan*
Columbia University*	Saint Mary's University*	University of Missouri - Kansas City
Cornell University	Samford University - Cumberland Law*	University of North Carolina*
Creighton University	Seton Hall University	University of Notre Dame*
CUNY School of Law at Queens	South Texas College of Law*	University of Pittsburgh*
Drake University Law School	Southern Illinois University	University of Richmond*
Duke University*	Southern Methodist University*	University of San Diego*
Emory University*	Stanford University Law School	University of San Francisco
Florida Coastal School of Law*	Stetson University	University of South Carolina*
Florida State University*	Suffolk University Law School*	University of South Dakota
Fordham University	Syracuse University College of Law	University of Tennessee
Franklin Pierce Law Center*	Temple University*	University of Texas School of Law*
George Washington University*	Texas Southern University	University of Toledo
Georgetown University	Texas Tech University*	University of Virginia*
Georgia State University*	Texas Wesleyan University	Valparaiso University
Harvard Law School	Thomas M. Cooley Law School	Vanderbilt University Law School*
Howard University	Tulane University*	Vermont Law School
Indiana University - Bloomington	University at Buffalo	Villanova University
John Marshall Law School - Chicago*	University of Akron	Wake Forest University School of Law*
Lewis and Clark - Northwestern	University of Alabama*	Washburn University
Louisiana State University*	University of Arkansas - Fayetteville	Washington and Lee University
Loyola University - New Orleans	University of Arkansas - Little Rock	Washington University - Missouri*
McGeorge School of Law	University of Baltimore*	Wayne State University
Mercer University*	University of Chicago	West Virginia University*
Michigan State University - Detroit College	University of Cincinnati*	Widener University School of Law
Mississippi College School of Law	University of Colorado*	Willamette University
New England School of Law*	University of Connecticut	William and Mary Law School*
New York Law School	University of Dayton	





**2004-05  
FACULTY AND STAFF**

## Teaching Faculty\* - Wake Forest University, Fall 2004

	Full-time Teaching		Teaching Administrators/Staff		Part-time Teaching		Total		FTE
	Male	Female	Male	Female	Male	Female	Male	Female	
Arts and Sciences**	363		82		34		479		409
	234	129	41	41	16	18	291	188	
Divinity School	5		3		19		27		20
	4	1	1	2	13	6	18	9	
Law School	40		5		12		57		46***
	23	17	2	3	11	1	36	21	
Babcock MBA	36		6		4		46		39***
	32	4	6	0	1	3	39	7	
Reynolda Campus Total	444		96		69		609		514
	293	151	50	46	41	28	384	225	
Medical School	714		17		513		1,244		771
	541	173	9	8	414	99	964	280	
University Total	1,158		113		582		1,853		1,285
	834	324	59	54	455	127	1348	505	

\* All faculty (including visiting) actually teaching Fall 2004

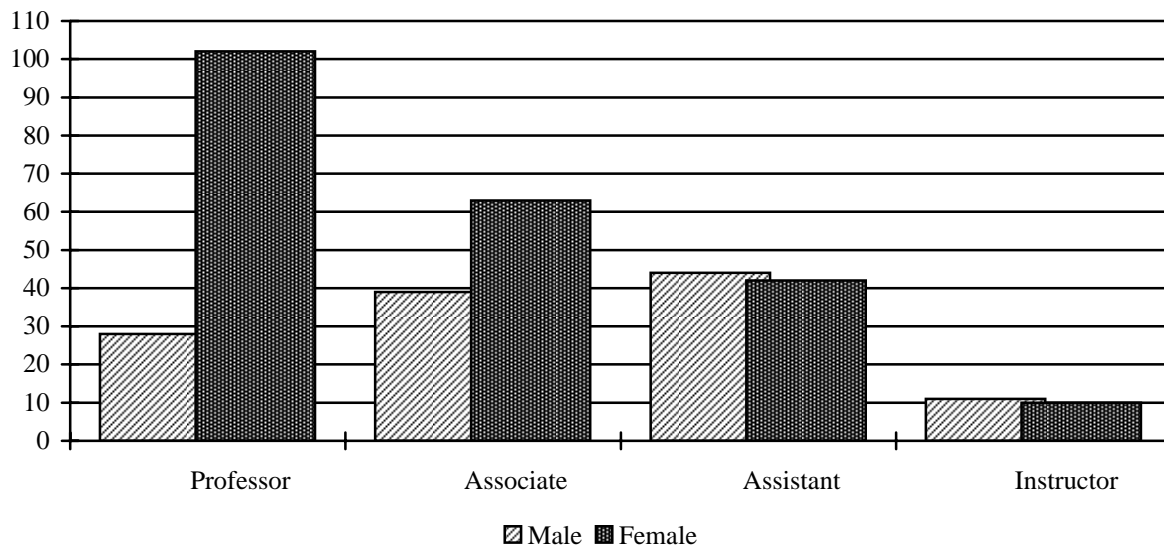
\*\* Includes the Calloway School of Business and Accountancy

\*\*\* Estimated by adding full-time faculty to one third of both teaching administrators/staff and part-time faculty

## Full-time Faculty^ by Rank and Gender, Fall 2004

	Male		Female		Total by Rank	
	Number	%	Number	%	Number	%
Professor	28	22%	102	45%	130	37%
Associate	39	30%	63	28%	102	29%
Assistant	44	34%	42	19%	86	24%
Instructor	11	9%	10	4%	21	6%
Lecturer/Other	6	5%	9	4%	15	4%
Total	128	100%	226	100%	354	100%

^Includes those faculty of the College of Arts and Sciences and the Calloway School of Business and Accountancy who are "Full-time Instructional Faculty" as defined by the AAUP Faculty Compensation Survey



## Full-time Faculty^ by Ethnicity - Wake Forest University, Fall 2004

	Black		Amer. Indian		Asian		Hispanic		White		Other/ Unknown		Total
	#	%	#	%	#	%	#	%	#	%	#	%	
Arts and Sciences*	15	4.2%	0	0.0%	14	4.0%	17	4.8%	308	87.0%	0	0.0%	<b>354</b>
Divinity School	0	0.0%	0	0.0%	0	0.0%	0	0.0%	5	100.0%	0	0.0%	<b>5</b>
Law School	4	10.8%	0	0.0%	0	0.0%	0	0.0%	33	89.2%	0	0.0%	<b>37</b>
Babcock MBA	1	2.9%	0	0.0%	3	8.6%	0	0.0%	31	88.6%	0	0.0%	<b>35</b>
Medical School**	19	2.2%	0	0.0%	74	8.7%	19	2.2%	732	86.4%	3	0.4%	<b>847</b>
<b>Total</b>	<b>39</b>	<b>3.1%</b>	<b>0</b>	<b>0.0%</b>	<b>91</b>	<b>7.1%</b>	<b>36</b>	<b>2.8%</b>	<b>1,109</b>	<b>86.8%</b>	<b>3</b>	<b>3.1%</b>	<b>1,278</b>

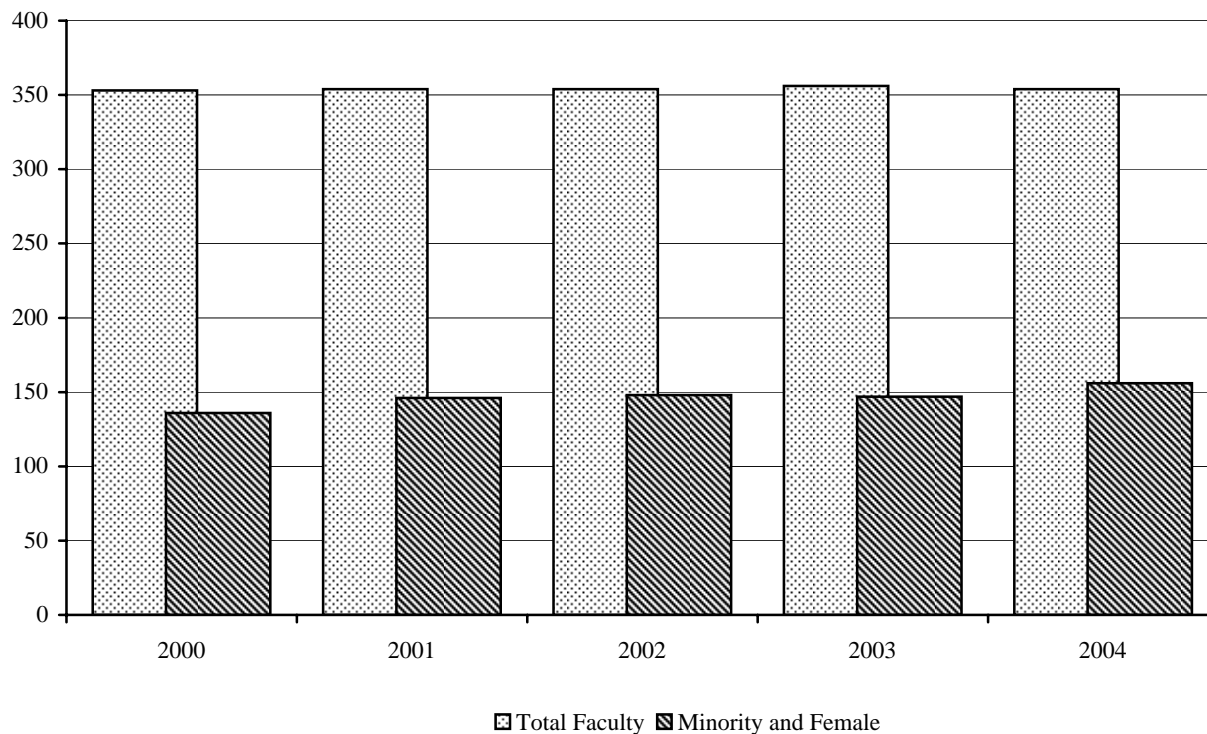
^"Full-time Instructional Faculty" as defined by the AAUP Faculty Compensation Survey (excludes medical school faculty)

\* Includes the Calloway School of Business and Accountancy

\*\* Includes administrative faculty

## Percentage of Full-time Minority and Female Faculty^, Arts and Sciences\*, Fall 2000-2004

Fall	Total Faculty	Number of Minority	% Minority	Number of Female	% Female	Total Percentage of Minority and Female
2000	353	43	12.2%	124(19 minority)	35%	42%
2001	354	41	11.6%	125(19 minority)	35%	42%
2002	354	44	12.4%	128(19 minority)	36%	43%
2003	356	47	13.2%	128(17 minority)	36%	44%
2004	354	46	13.0%	128(18 minority)	36%	44%



^"Full-time Instructional Faculty" as defined by the AAUP Faculty Compensation Survey

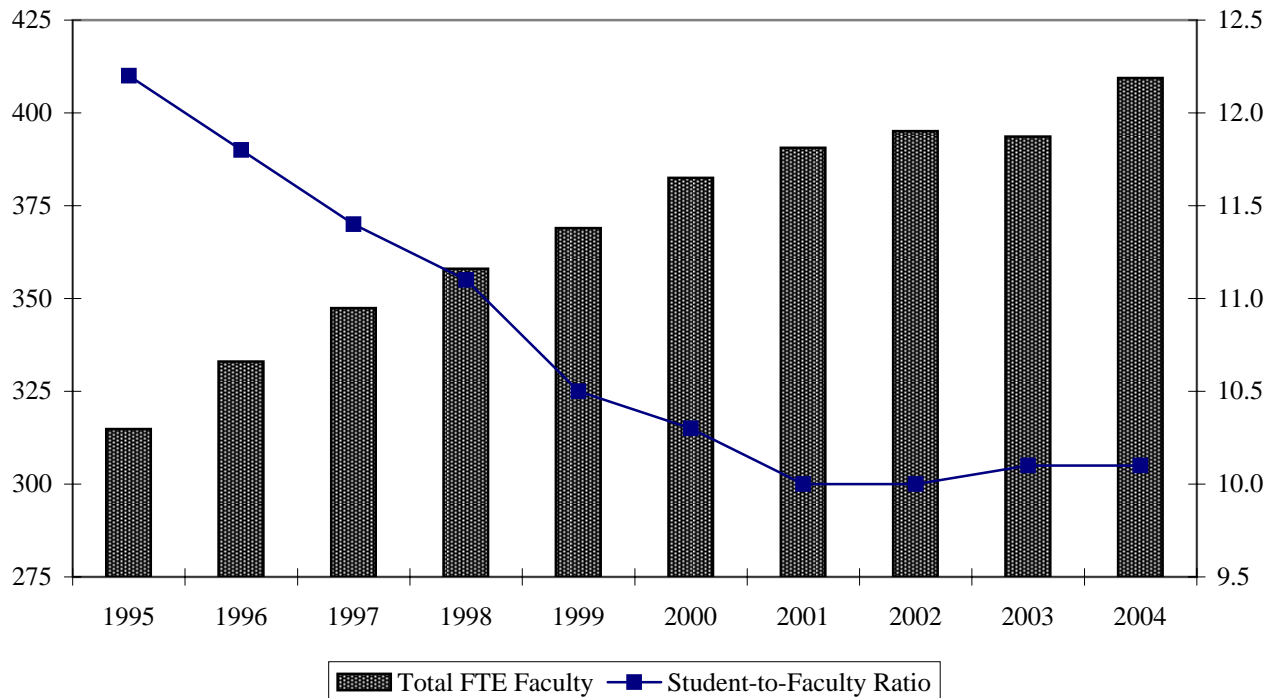
\* Includes the Calloway School of Business and Accountancy

## Teaching Equivalents and Student-to-Faculty Ratio\*, Fall 1995-2004

	1995	1996	1997	1998	1999	2000	2001	2002	2003	2004
Full-time Teaching Faculty	292	308	315	324	333	355	357	362	362	363
FTE	292	308	315	324	333	355	357	362	362	363
Part-time Teaching Faculty**	35	39	58	44	79	74	84	75	88	82
FTE	17.42	19.22	26.15	30.25	31.76	23.29	28.19	26.2	28.3	33.86
Teaching Administrators/Staff	11	13	13	11	12	11	14	16	11	34
FTE	5.41	5.81	6.25	3.75	4.24	4.21	5.42	6.9	3.3	12.56
Total Teaching Faculty/FTE	338/315	360/333	386/347	379/358	424/369	440/383	455/391	453/395	461/394	479/409
Student-to-Faculty Ratio	12.2	11.8	11.4	11.1	10.5	10.3	10.0	10.0	10.1	10.1

\*Arts and Sciences and the Calloway School of Business and Accountancy

\*\* Includes part-time faculty and part-time instructors, fee basis only for years 1999-2004



## Percentage of Part-time Faculty\*, Fall 2000-2004

	2000	2001	2002	2003	2004
Total Number of Full-time Faculty and Teaching Administrators/Staff	366	371	378	373	397
Total Number of Part-time Faculty**	74	84	75	88	82
Percentage of Part-time Faculty	16.8%	18.5%	16.6%	19.1%	17.1%
Percentage of Part-time FTE Faculty	6.1%	7.2%	6.6%	7.2%	8.3%

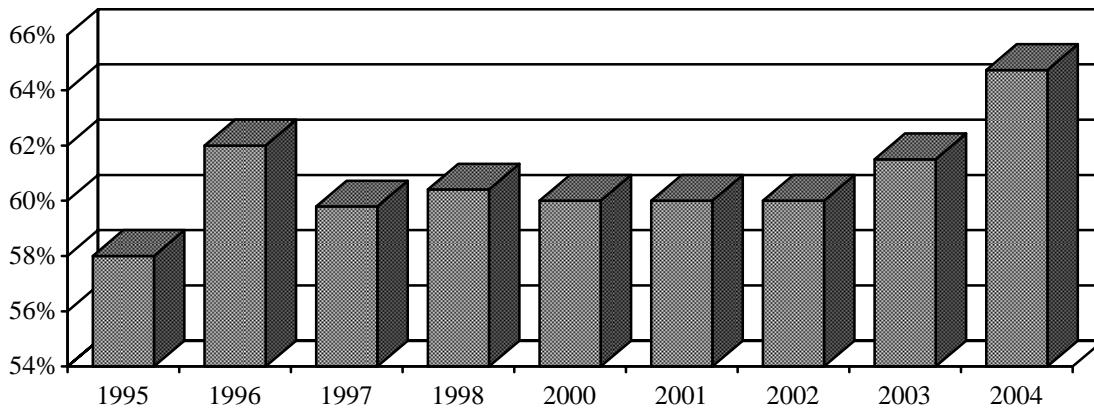
\*Faculty actually teaching in the College of Arts and Sciences and the Calloway School of Business and Accountancy

\*\* Includes part-time faculty and part-time instructors, fee basis only

### Tenure of Full-time Instructional Faculty^ - Reynolda Campus, Fall 2004

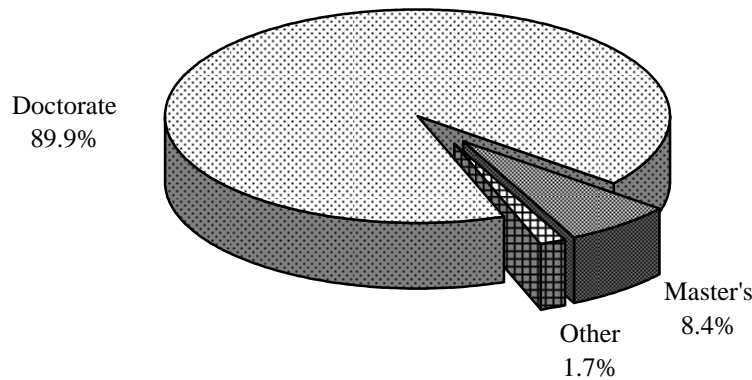
Rank	Tenured		Tenure Track		Non-Tenure Track		Total		% Tenured	
	Male	Female	Male	Female	Male	Female	Male	Female	Male	Female
Professor	128	36	1	0	4	1	133	37	96%	97%
Associate	74	40	4	0	1	0	79	40	94%	100%
Assistant	0	0	39	36	10	12	49	48	0%	0%
Instructor	0	0	1	1	10	9	11	10	0%	0%
Lecturer	1	0	0	0	6	6	7	6	14%	0%
Other rank	0	0	0	0	4	7	4	7	0%	0%
<b>Total</b>	<b>203</b>	<b>76</b>	<b>45</b>	<b>37</b>	<b>35</b>	<b>35</b>	<b>283</b>	<b>148</b>	<b>72%</b>	<b>51%</b>

### Percentage of Full-time Instructional Faculty^ Tenured - Reynolda Campus, Fall 1995-2004



### Highest Degree Earned for Full-Time Instructional Faculty^\*, Fall 2004

Degree	Male		Female		Total Faculty	
	#	%	#	%	#	%
Doctorate	212	93.8%	112	87.5%	324	91.5%
Master's	11	4.9%	13	10.2%	24	6.8%
Other	3	1.3%	3	2.3%	6	1.7%
<b>Total</b>	<b>226</b>		<b>128</b>		<b>354</b>	<b>100%</b>



^"Full-time Instructional Faculty" as defined by the AAUP Faculty Compensation Survey

\*Arts and Sciences and the Calloway School of Business and Accountancy

### Tenure of Full-time Instructional Faculty\* - School of Medicine, Fall 2004

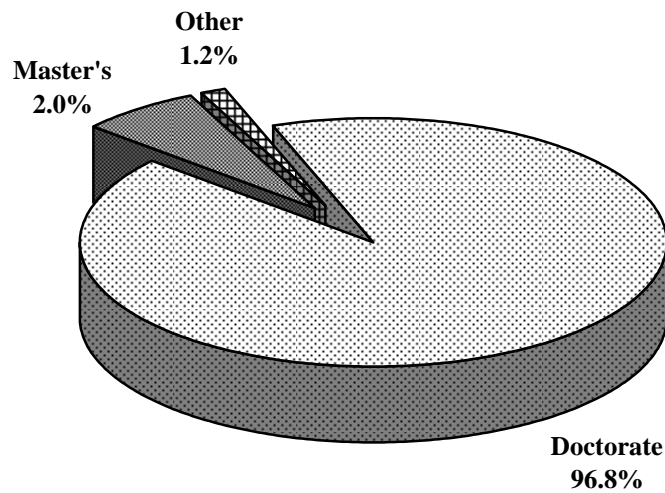
Rank	Tenured		Tenure Track		Non-Tenure Track		Total		% Tenured	
	Male	Female	Male	Female	Male	Female	Male	Female	Male	Female
Professor	126	17	69	10	3	1	198	28	64%	61%
Associate	15	2	143	43	12	6	170	51	9%	4%
Assistant	0	0	179	84	34	23	213	107	0%	0%
Instructor	0	0	22	12	20	28	42	40	0%	0%
Other rank	0	0	0	0	0	0	0	0	0%	0%
<b>Total</b>	<b>141</b>	<b>19</b>	<b>413</b>	<b>149</b>	<b>69</b>	<b>58</b>	<b>623</b>	<b>226</b>	<b>23%</b>	<b>8%</b>

\* Source: Office of the Dean

### Highest Degree Earned for Full-Time Instructional Faculty\* - School of Medicine, Fall 2004

Degree	Male		Female		Total Faculty	
	#	%	#	%	#	%
Doctorate	609	97.8%	208	92.0%	817	96.2%
Master's	9	1.4%	15	6.6%	24	2.8%
Other	5	0.8%	3	1.3%	8	0.9%
<b>Total</b>	<b>623</b>		<b>226</b>		<b>849</b>	<b>100%</b>

\* Source: Office of the Dean

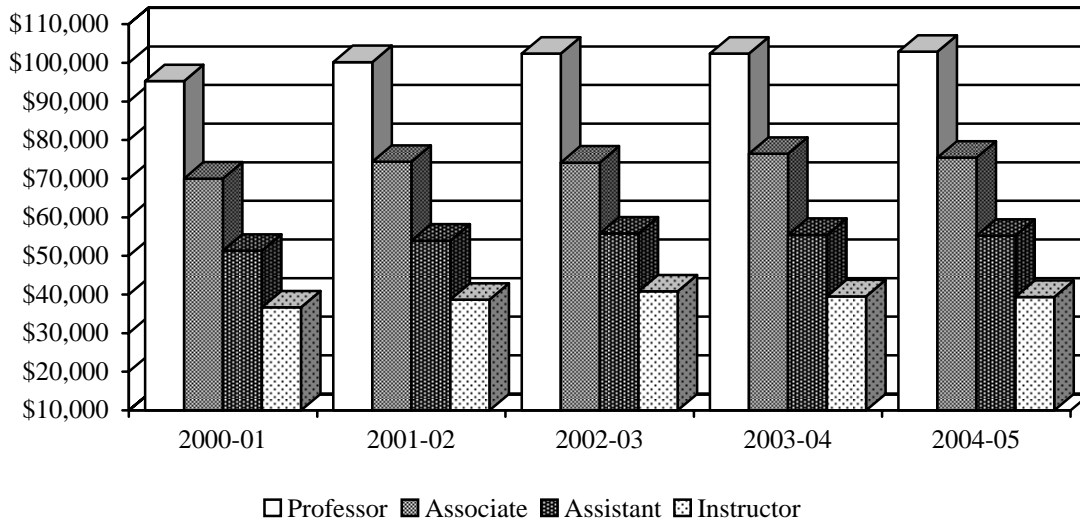


**\*Average Full-time Faculty Salary by Rank - Reynolda Campus**

Rank	2000-01	2001-02	2002-03	2003-04	2004-05
Professor	\$95,270	\$100,195	\$102,408	\$102,383	\$102,879
Associate	\$70,011	\$74,400	\$74,187	\$76,439	\$75,455
Assistant	\$51,355	\$53,958	\$55,824	\$55,441	\$55,231
Instructor	\$36,653	\$38,640	\$40,816	\$39,509	\$39,342
<b>**All Ranks</b>	<b>\$72,256</b>	<b>\$75,590</b>	<b>\$76,684</b>	<b>\$77,494</b>	<b>\$78,706</b>

\* Sources: *ACADEME* and Office of Human Resources

\*\* Average salary of all ranks, *including lecturers and no rank*



**Average Full-time Faculty Salaries - College and Calloway, 2004-2005**

Division	Professor	Associate	Assistant	Instructor
Humanities and Fine Arts	\$88,328	\$64,490	\$44,961	\$37,500
Social Sciences and SBA <sup>^</sup>	\$95,941	\$76,297	\$54,946	#
Natural Sciences and Mathematics	\$93,468	\$70,163	\$52,251	\$47,174
All Divisions	\$92,741	\$70,635	\$50,054	\$39,342

#No faculty in this category

**NOTE:**

**Humanities and Fine Arts include:**

- Art
- Classical Languages
- East Asian Languages and Cultures
- English
- German and Russian
- Humanities
- Music
- Philosophy
- Religion
- Romance Languages
- Theatre and Dance
- Certain Interdepartmental and Chaired Professors
- Women's Studies

**Social Sciences and SBA<sup>^</sup> include:**

- Anthropology
- Communication
- Counseling
- Economics
- Education
- History
- Political Science
- Psychology
- Sociology
- <sup>^</sup>Calloway School of Business and Accountancy

**Natural Sciences and Mathematics include:**

- Biology
- Chemistry
- Computer Science
- Health and Exercise Science
- Mathematics
- Physics

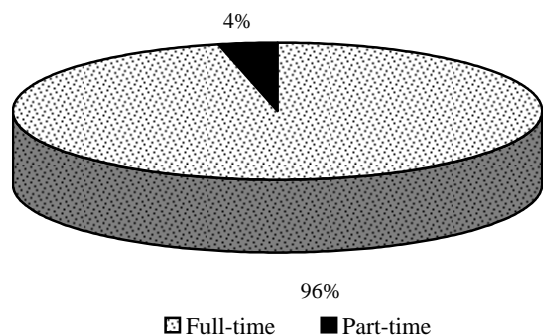
### Full-time Staff by Category, Gender, and Ethnicity - Reynolda Campus, 2004

Category	White		Black		Hispanic		Asian		Native American		Unknown		Total
	M	F	M	F	M	F	M	F	M	F	M	F	
	Executive / Administrative	55	35	4	2	0	0	1	0	0	0	0	
Professional / Non-Faculty	205	232	16	18	3	0	5	6	1	0	8	5	499
Secretarial / Clerical	21	224	3	25	0	2	0	2	0	1	0	1	279
Technical / Paraprofessional	31	24	5	5	1	0	0	1	0	0	0	0	67
Skilled Craft	53	1	4	0	1	0	0	0	1	0	0	0	60
Service Maintenance	92	28	45	41	6	15	1	0	0	0	0	0	228
<b>Total</b>	<b>457</b>	<b>544</b>	<b>77</b>	<b>91</b>	<b>11</b>	<b>17</b>	<b>7</b>	<b>9</b>	<b>2</b>	<b>1</b>	<b>8</b>	<b>6</b>	<b>1,230</b>

### Full-time Staff by Category, Gender, and Ethnicity - Bowman Gray Campus, 2004

Category	White		Black		Hispanic		Asian		Native American		Unknown		Total
	M	F	M	F	M	F	M	F	M	F	M	F	
	Executive / Administrative	82	227	4	24	0	1	1	2	0	0	0	
Professional / Non-Faculty	103	447	9	26	6	9	45	27	0	2	0	1	675
Secretarial / Clerical	30	912	8	102	0	7	1	10	0	5	0	0	1,075
Technical / Paraprofessional	158	295	14	34	4	7	14	33	0	2	0	0	561
Skilled Craft	27	4	3	1	1	0	0	0	0	0	0	0	36
Sales	5	8	0	0	0	0	0	0	0	0	0	0	13
Service Maintenance	8	43	9	28	1	1	0	0	0	1	0	0	91
Laborers	17	18	3	1	0	1	0	0	0	0	0	0	40
Operators	5	2	0	0	0	0	0	0	0	0	0	0	7
<b>Total</b>	<b>435</b>	<b>1,956</b>	<b>50</b>	<b>216</b>	<b>12</b>	<b>26</b>	<b>61</b>	<b>72</b>	<b>0</b>	<b>10</b>	<b>0</b>	<b>2</b>	<b>2,840</b>

University Staff Percentages



### Full-time vs. Part-time Staff 2004

	Full-time	Part-time	Total
Reynolda Campus	1,230	31	1,261
Bowman Gray Campus	2,840	118	2,958
<b>Total</b>	<b>4,070</b>	<b>149</b>	<b>4,219</b>



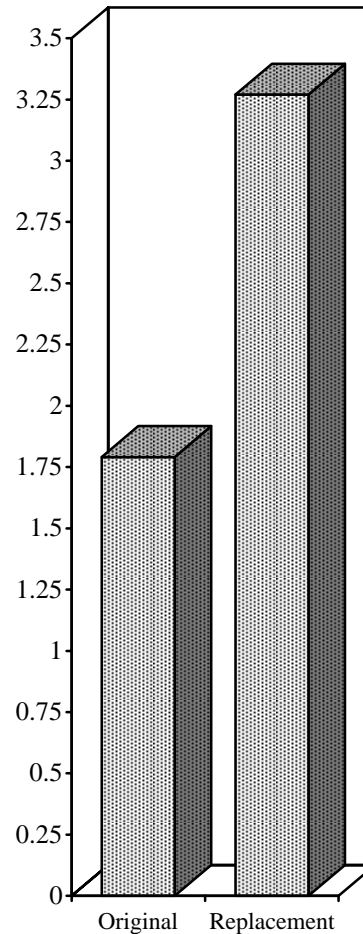


**2004-05  
FACILITIES**

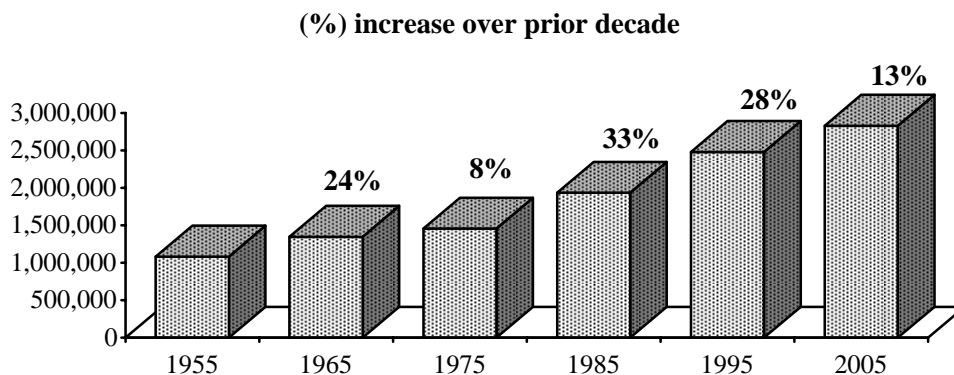
## Main Facilities Reynolda Campus - Building Profiles

		Date	Gross Sq. ft.	Assignable Sq. ft.
<b>Academic</b>	Calloway Center (w/ Kirby Wing)	1969	88,674	54,394
	Carswell Hall	1955	58,815	38,971
	Greene Hall	1999	80,000	46,872
	Museum of Anthropology	1987	7,048	5,107
	Olin Physical Laboratory	1989	31,837	20,751
	Reynolds Gymnasium	1955	151,569	103,717
	Salem Hall	1955	55,083	33,915
	Scales Fine Art Center	1976	143,346	76,635
	Tribble Hall	1963	80,168	47,937
	Wingate Hall & Wait Chapel	1955	81,879	39,066
	Winston Hall	1961	100,460	51,852
	Worrell Professional Center	1993	178,000	115,700
	Z. Smith Reynolds Library	1955	187,659	133,186
<b>Support</b>	Starling Hall/Welcome Center	1956	9,239	3,686
	Manchester Athletic Center	1978	65,393	36,178
	Benson Center	1990	100,422	57,849
	Central Heating Plant	1955	15,466	6,578
	Information Systems	1998	71,000	60,393
	Landscaping Building	1982	5,709	5,224
	Maintenance Garage Shop	1956	10,153	6,656
	Miller Center	2001	64,845	38,101
	H.S. Moore Bldg.-Facilities Mgmt	1956	24,162	21,818
	President's House	1929	14,399	10,800
	Bookstore Warehouse/Photographer	1984	6,000	5,228
	Reynolda Hall	1955	135,799	99,602
	WFDD Radio	1920	3,769	1,681
<b>Residential (on Campus)</b>	Babcock	1961	53,027	36,231
	Bostwick	1955	43,568	32,751
	Collins	1985	49,601	31,720
	Davis	1955	69,959	43,387
	Efird	1955	15,476	10,611
	Huffman	1955	15,476	10,180
	Johnson	1955	43,392	32,305
	Kitchin	1955	66,373	43,727
	Luter	1971	68,175	43,255
	Martin	1994	28,754	22,960
	Palmer	1982	12,942	10,860
	Piccolo	1982	12,942	10,860
	Polo	1998	78,562	59,600
	Poteat	1955	52,271	37,082
	Student Apartments	1956	28,012	21,196
	Taylor	1955	68,680	45,831
	Townhouses	1976	7,897	6,717

**Total Cost of Buildings  
Listed  
(x \$100,000,000)**

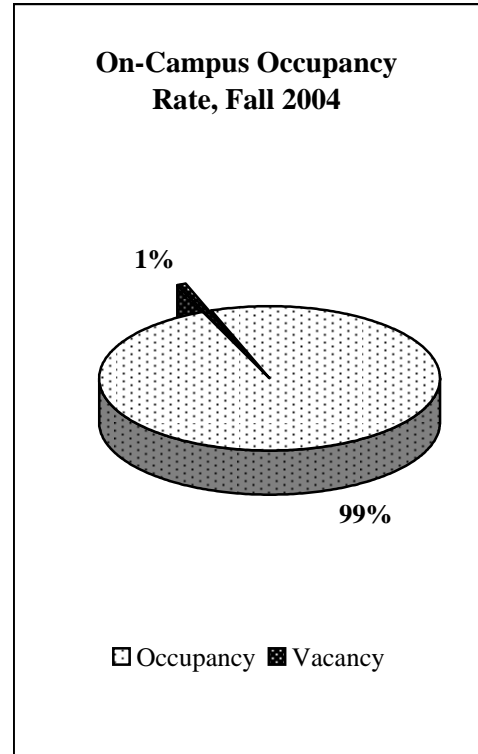


## Gross Square Feet of Reynolda Campus Facilities by Decade

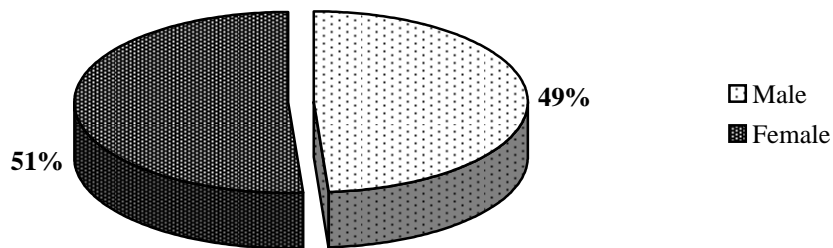


## Student Housing Utilization, Fall 2004

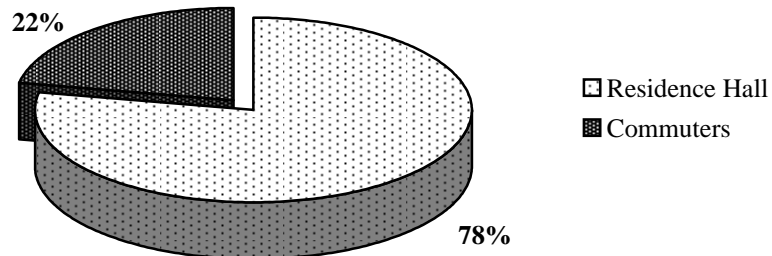
Student Housing	Capacity	Occupancy
Babcock (Coed)	250	249
Bostwick (Coed)	198	196
Collins (Coed)	231	229
Davis (Coed)	295	284
Efird (Coed)	95	84
Huffman Theme (Coed)	78	69
Johnson Substance Free (Coed)	198	195
Kitchin (Coed)	277	264
Luter (Coed)	289	281
North (Coed)	95	92
Palmer (Coed)	56	55
Piccolo (Coed)	62	62
Polo (Coed)	194	191
Poteat (Coed)	240	231
Rosedale, Theme Wesley (Coed)	14	14
Student Apartments (Coed)	110	109
Taylor (Coed)	248	238
Theme House - Anthony Aston (Coed)	13	12
Theme House - Technology Quarters (Male)	9	9
Theme House - Nia (Female)	10	9
Theme House - International (Coed)	12	12
Townhouses (Female)	31	31
1125 Polo Rd - Independent (Male)	4	3
Theme House - Baggataway (Male)	7	7
<b>Total</b>	<b>3,016</b>	<b>2,926</b>



### On-Campus Housing Utilization by Gender, Fall 2004



### Distribution of Fall 2004 Undergraduate Enrollment by Type of Housing



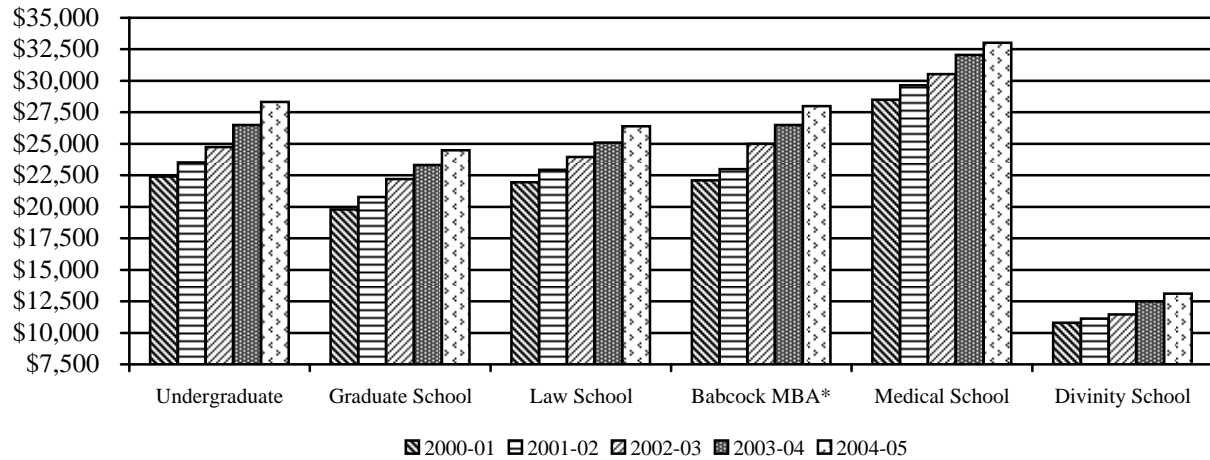


**2004-05  
FINANCES**

## First-year Student Tuition and Fees

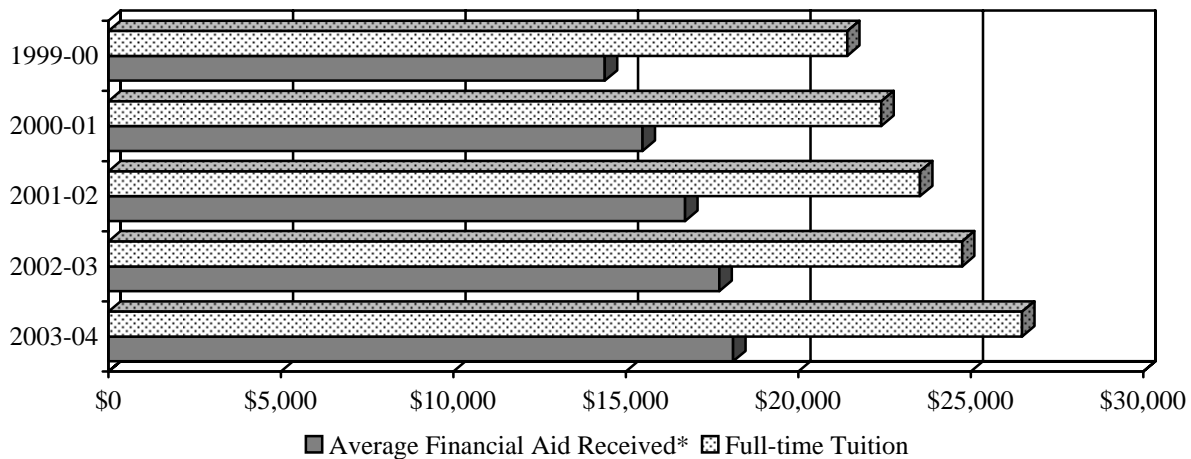
School	2000-01	2001-02	2002-03	2003-04	2004-05
Undergraduate	\$22,410	\$23,530	\$24,750	\$26,490	\$28,310
Graduate School	\$19,800	\$20,790	\$22,200	\$23,310	\$24,475
Law School	\$21,950	\$22,950	\$23,950	\$25,100	\$26,400
Babcock MBA*	\$22,100	\$23,000	\$25,000	\$26,500	\$28,000
Medical School	\$28,500	\$29,640	\$30,529	\$32,056	\$33,016
Divinity School	\$10,800	\$11,130	\$11,450	\$12,500	\$13,100

\* Resident first-year



## Undergraduate Tuition and Financial Aid

Year	Average Financial Aid Received*	Full-time Tuition	Percentage
1999-00	\$14,393	\$21,420	67.2%
2000-01	\$15,484	\$22,410	69.1%
2001-02	\$16,719	\$23,530	69.1%
2002-03	\$17,717	\$24,750	71.6%
2003-04	\$18,111	\$26,490	68.4%



\* Average amount of aid received from all sources (excluding parent loans) through the Office of Financial Aid.

## Annual Costs\* for "Most Competitive" Private Institutions, 2004-2005

### *Barron's Profile of American Colleges\*\**

Private Institution **	Room/Board	Tuition/Fees	Comprehensive Fees
New York University, NY	\$11,390	\$30,095	\$41,485
George Washington University, DC	\$10,210	\$30,820	\$41,030
Columbia University, NY	\$9,066	\$31,472	\$40,538
Georgetown University, DC	\$10,154	\$30,338	\$40,492
Middlebury College, VT	n/a	n/a	\$40,400
University of Chicago, IL	\$9,624	\$30,729	\$40,353
Washington University in St. Louis, MO	\$9,640	\$30,546	\$40,186
Wesleyan University, CT	\$8,474	\$31,650	\$40,124
Harvey Mudd College, CA	\$9,845	\$30,237	\$40,082
Cornell University, NY	\$9,882	\$30,167	\$40,049
Tufts University, MA	\$9,030	\$30,969	\$39,999
Boston College, MA	\$10,580	\$29,396	\$39,976
Connecticut College, CT	n/a	n/a	\$39,975
Bates College, ME	n/a	n/a	\$39,900
Massachusetts Institute of Technology, MA	\$9,100	\$30,800	\$39,900
Harvard University, MA	\$9,260	\$30,620	\$39,880
Vanderbilt University, TN	\$9,826	\$29,990	\$39,816
Brown University, RI	\$8,474	\$31,334	\$39,808
Colby College, ME	n/a	n/a	\$39,800
Brandeis University, MA	\$8,656	\$31,072	\$39,728
Haverford College, PA	\$9,420	\$30,270	\$39,690
Bowdoin College, ME	\$8,054	\$31,626	\$39,680
Johns Hopkins University, MD	\$9,516	\$30,140	\$39,656
University of Pennsylvania, PA	\$8,918	\$30,716	\$39,634
Carnegie Mellon University, PA	\$8,554	\$31,036	\$39,590
Hamilton College, NY	\$7,825	\$31,700	\$39,525
Amherst College, MA	\$8,160	\$31,360	\$39,520
University of Southern California, CA	\$8,998	\$30,512	\$39,510
Northwestern University, IL	\$9,393	\$30,085	\$39,478
Dartmouth College, NH	\$9,000	\$30,465	\$39,465
Swarthmore College, PA	\$9,314	\$30,094	\$39,408
Stanford University, CA	\$9,503	\$29,847	\$39,350
Duke University, NC	\$8,525	\$30,720	\$39,245
Colgate University, NY	\$7,620	\$31,440	\$39,060
Vassar College, NY	\$7,680	\$31,350	\$39,030
Wellesley College, MA	\$9,202	\$29,796	\$38,998
Claremont McKenna College, CA	\$9,780	\$29,210	\$38,990
Emory University, GA	\$9,650	\$29,322	\$38,972
Yale University, CT	\$9,030	\$29,820	\$38,850
Oberlin College, OH	\$7,643	\$31,167	\$38,810
Pomona College, CA	\$10,385	\$28,365	\$38,750
College of the Holy Cross, MA	\$8,860	\$29,686	\$38,546
Princeton University, NJ	\$8,387	\$29,910	\$38,297
Williams College, MA	\$8,110	\$29,990	\$38,100
Lafayette College, PA	\$8,786	\$28,625	\$37,411
Carleton College, MN	\$6,309	\$30,666	\$36,975
Reed College, OR	\$7,750	\$29,200	\$36,950
University of Notre Dame, IN	\$7,418	\$29,512	\$36,930
<b>Wake Forest University, NC</b>	<b>\$8,000</b>	<b>\$28,310</b>	<b>\$36,310</b>
Case Western Reserve, University, OH	\$8,202	\$26,762	\$34,964
Davidson College, NC	\$7,732	\$27,171	\$34,903
Macalester College, MN	\$7,350	\$26,806	\$34,156
California Institute of Technology, CA	\$8,013	\$25,551	\$33,564
Washington and Lee University, VA	\$6,790	\$25,760	\$32,550
University of Richmond, VA	\$5,390	\$26,520	\$31,910
Rice University, TX	\$8,380	\$18,826	\$27,206

\*Source: US NEWS AND WORLD REPORT America's Best Colleges 2005

\*\*Private specialty schools (art and engineering) are not included

## Undergraduate Student Financial Aid Programs, 1999-2004

Type of Aid	1999-00	2000-01	2001-02	2002-03	2003-04
<b>Institutional Aid</b>					
Athletic	\$5,661,037	\$5,872,655	\$6,350,145	\$6,354,006	\$7,989,559
Non-Athletic*	\$16,439,221	\$17,296,821	\$19,197,630	\$21,033,958	\$21,906,735
<b>Total Institutional and Other*</b>	<b>\$22,100,258</b>	<b>\$23,169,476</b>	<b>\$25,547,775</b>	<b>\$27,387,964</b>	<b>\$29,896,294</b>
<b>Private Aid</b>					
Grants	\$2,486,653	\$2,930,391	\$3,240,879	\$3,517,633	\$3,290,533
Loans	\$1,399,198	\$2,034,051	\$2,296,674	\$2,356,203	\$3,149,602
<b>Total Private</b>	<b>\$3,885,851</b>	<b>\$4,964,442</b>	<b>\$5,537,553</b>	<b>\$5,873,836</b>	<b>\$6,440,135</b>
<b>Federal</b>					
PELL	\$522,479	\$575,373	\$701,335	\$796,011	\$862,662
SEOG	\$465,237	\$658,095	\$550,727	\$560,628	\$651,354
Perkins	\$1,487,737	\$2,232,442	\$2,983,762	\$3,385,491	\$3,475,568
Work Study	\$574,204	\$728,189	\$528,038	\$545,402	\$601,145
Stafford#	\$4,793,847	\$4,505,506	\$4,314,617	\$4,919,554	\$5,412,500
<b>Total Federal###</b>	<b>\$10,953,843</b>	<b>\$12,884,200</b>	<b>\$12,845,616</b>	<b>\$14,962,542</b>	<b>\$17,400,098</b>
<b>State</b>					
NCLTG	\$1,765,750	\$1,773,900	\$1,743,750	\$1,813,986	\$1,908,900
NC Scholarship Incentive Grant**	\$17,250	\$18,750	\$8,400	\$7,700	\$13,650
<b>Total State###</b>	<b>\$2,889,680</b>	<b>\$2,938,325</b>	<b>\$2,893,825</b>	<b>\$3,022,197</b>	<b>\$3,133,135</b>
<b>Total Financial Aid</b>	<b>\$39,829,632</b>	<b>\$43,956,443</b>	<b>\$46,824,769</b>	<b>\$51,246,539</b>	<b>\$56,869,662</b>

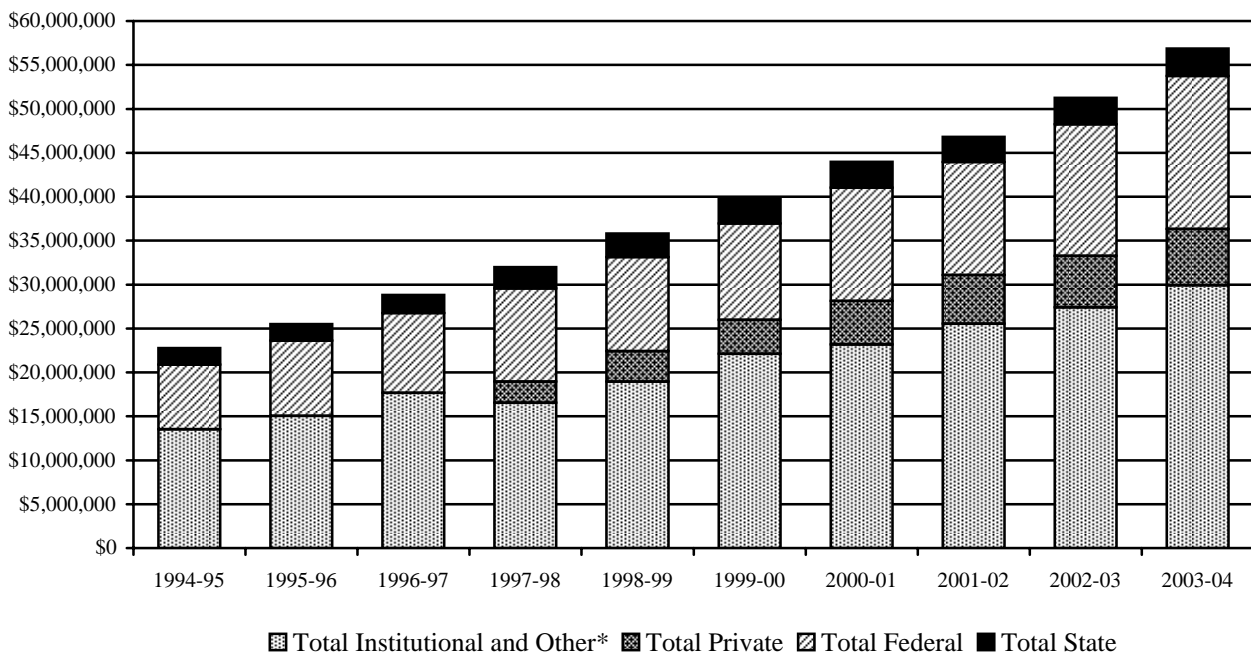
\* Includes tuition concessions

\*\* Federal and State share

# This total includes both subsidized and unsubsidized loans.

## This total includes Federal grants and loans not listed in the above categories. The amount not listed for 2003-04 is \$6,396,869.

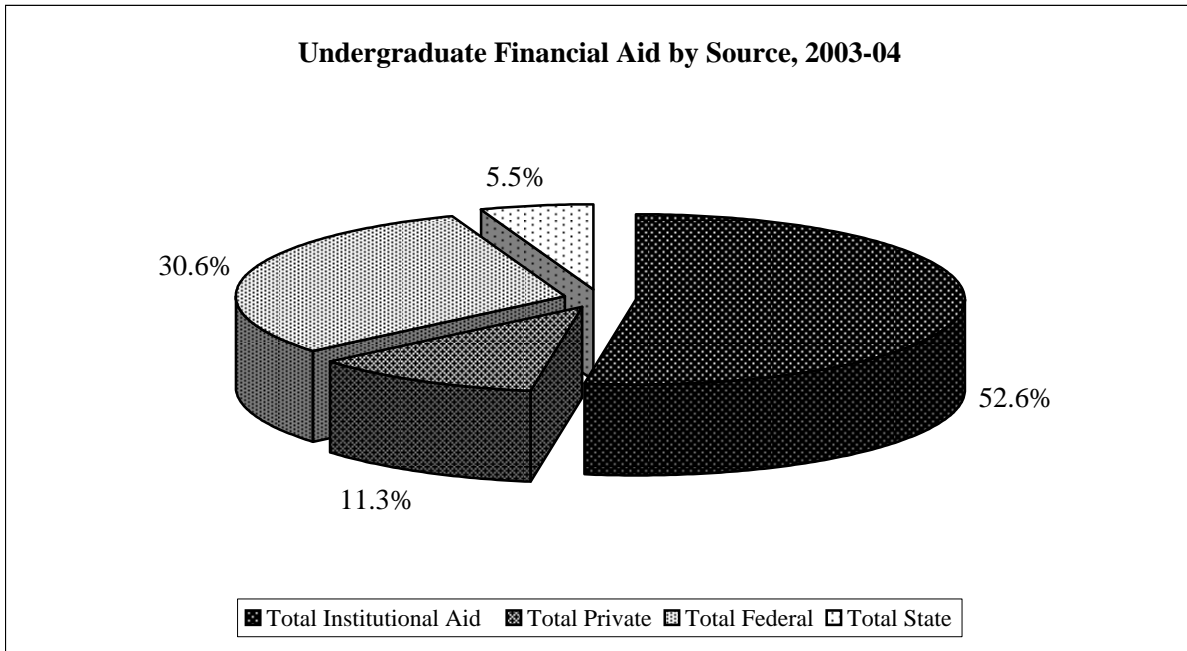
### This total includes State grants and loans not listed in the above categories. The amount not listed for 2003-04 is \$16,260.



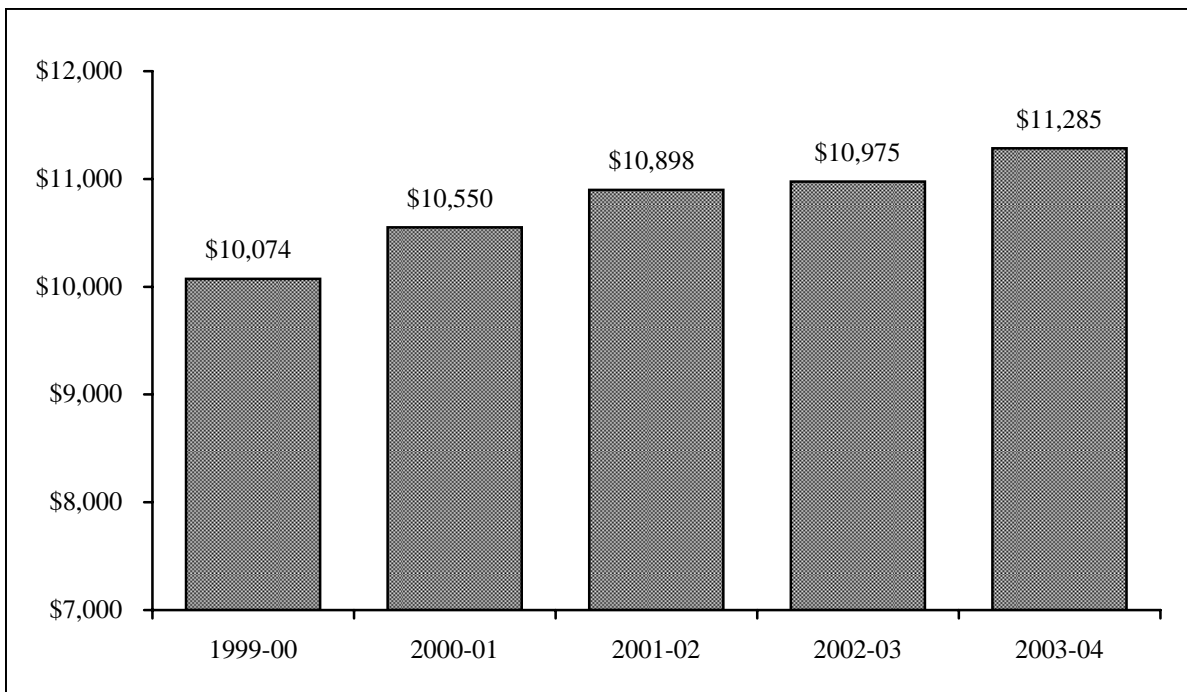
Note: Private aid is included as part of institutional aid from 1992-93 through 1996-97.

## Undergraduate Financial Aid by Source, 2004-2005

Type of Aid	Total Amount	% of Total
Total Institutional Aid	\$29,896,294	52.6%
Total Private	\$6,440,135	11.3%
Total Federal	\$17,400,098	30.6%
Total State	\$3,133,135	5.5%
<b>Total</b>	<b>\$56,869,662</b>	<b>100.0%</b>



## Average Instructional Dollars Expended Per Undergraduate Student, 2000-2004

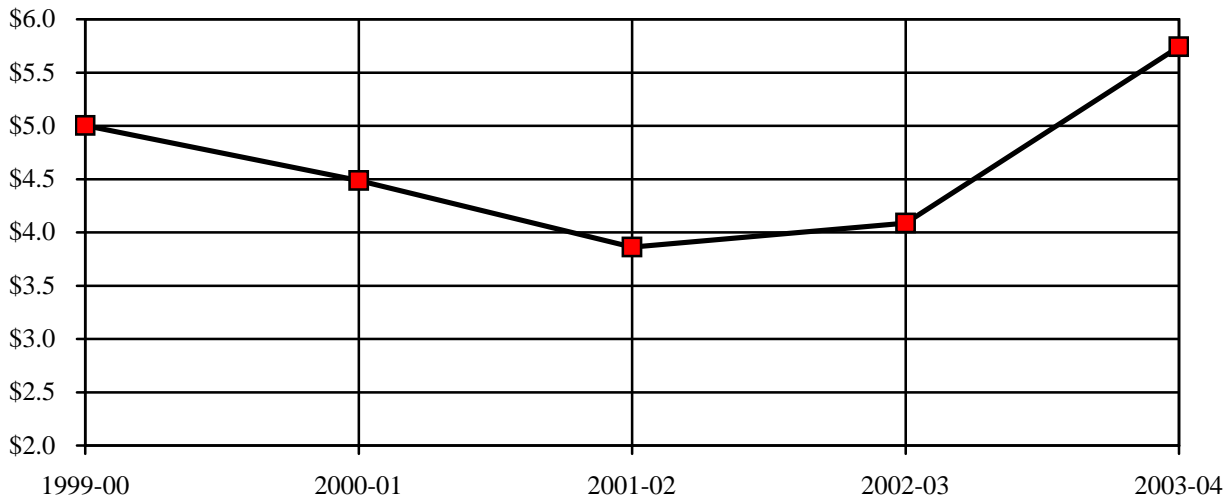




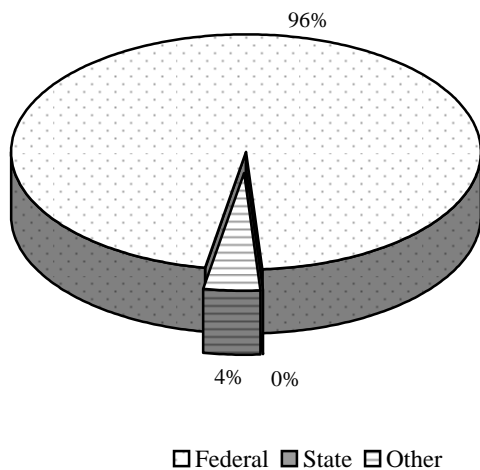
## Research Grants by Fund Source, Reynolda Campus, 2000-2004

Fund Source	1999-00	2000-01	2001-02	2002-03	2003-04
Federal	\$3,452,312	\$3,036,514	\$3,233,141	\$3,334,303	\$5,513,502
State	\$200,135	\$573,189	\$49,119	\$221,112	\$0
Other	\$1,350,903	\$877,070	\$579,351	\$530,418	\$229,529
<b>Total</b>	<b>\$5,003,350</b>	<b>\$4,486,773</b>	<b>\$3,861,611</b>	<b>\$4,085,833</b>	<b>\$5,743,031</b>

Total Research Grants Received (x \$1,000,000)



Research Grants 2003-04



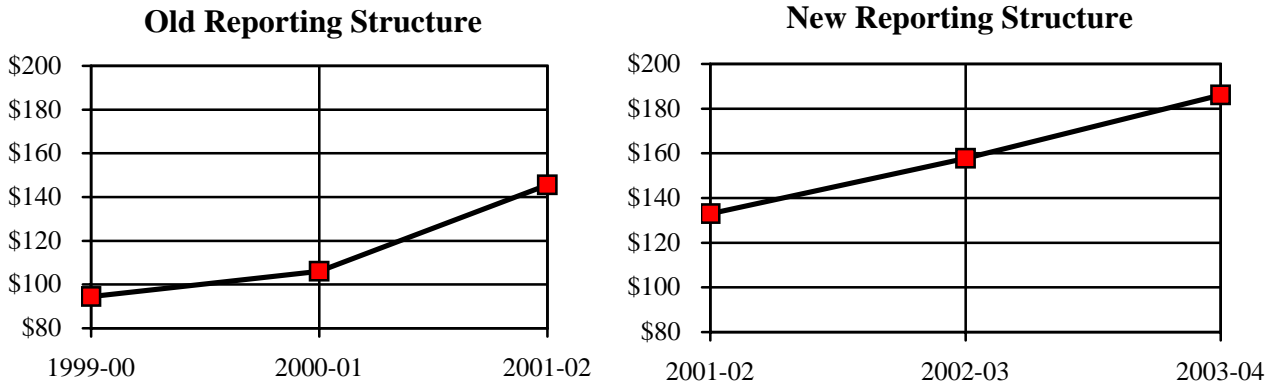
## Research Grants by Discipline

Anthropology (9)	\$63,953
Art (0.5)	\$143,640
Biology (9)	\$355,882
Calloway (1)	\$25,300
Chemistry (13)	\$1,205,296
Communication (5)	\$226,264
Computer Science (3.5)	\$742,683
Education (1)	\$4,000
Graduate Studies (1)	\$38,000
Health and Exercise Science (13)	\$1,351,850
International Studies (2)	\$176,919
Law School (1)	\$2,000
Mathematics (2)	\$550,511
Physics (7)	\$755,782
Sociology (1)	\$58,108
University Police (1)	\$42,842
<b>Total (72)</b>	<b>\$5,743,030</b>

## Research Grants by Fund Source, Bowman Gray Campus, 2000-2004

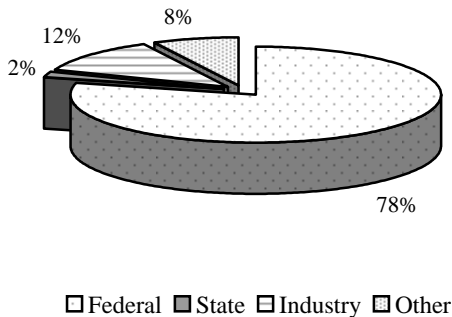
Fund Source	1999-00	2000-01	2001-02	2002-03	2003-04
Federal	\$64,522,822	\$73,437,005	\$114,840,282	\$122,966,458	\$146,954,320
State	\$7,031,956	\$7,357,337	\$3,194,199	\$3,239,256	\$3,564,605
Industry	\$16,215,674	\$13,573,733	\$15,781,030	\$16,051,813	\$21,450,760
Other	\$6,696,387	\$11,625,438	\$11,771,880	\$15,474,943	\$14,074,117
<b>Total</b>	<b>\$94,466,839</b>	<b>\$105,993,513</b>	<b>\$145,587,391</b>	<b>\$157,732,470</b>	<b>\$186,043,802</b>

Total Research Grants Received (x 1,000,000)\*



\*The Bowman Gray Campus changed the reporting structure of research grant data in 2001-02. The data now includes both direct and indirect costs. The total for 2000-01 would be \$132,787,300 if reported the same way.

Research Grants 2003-04



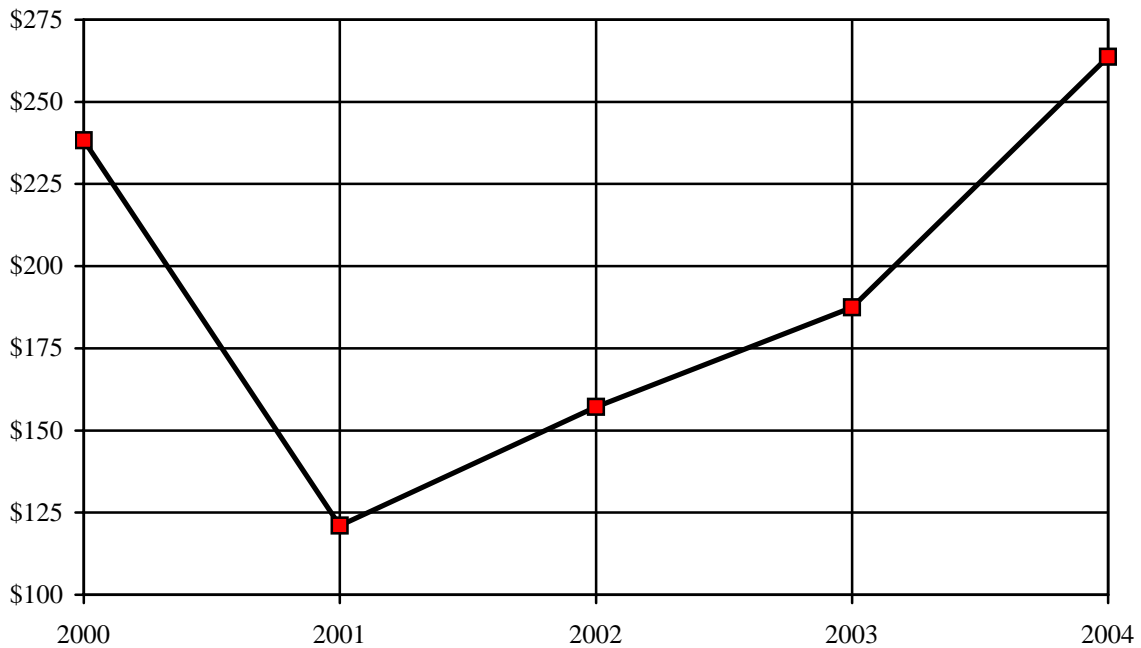
## Research Grants by Discipline

Anesthesiology (26)	\$2,698,126
Biochemistry (29)	\$6,061,321
Cancer Biology (27)	\$4,972,614
Dermatology (63)	\$4,180,564
Family & Community Medicine (18)	\$2,801,504
Internal Medicine (263)	\$35,900,654
Medical Education (5)	\$694,583
Microbiology/Immunology (22)	\$2,599,326
Neurobiology & Anatomy (30)	\$6,446,374
Neurology (44)	\$8,909,136
Obstetrics & Gynecology (16)	\$2,614,354
Pathology (50)	\$10,148,433
Pediatrics (56)	\$7,341,723
Physiology/Pharmacology (88)	\$20,428,270
Psychiatry (15)	\$5,014,912
Public Health Services (103)	\$45,871,458
Radiation Oncology (11)	\$2,587,836
Radiological Sciences (18)	\$2,993,847
Surgical Sciences (103)	\$9,109,124
Institutional (6)	\$4,669,643
<b>Total (993)</b>	<b>\$186,043,802</b>

## Sources of Revenue - Reynolda Campus, Fiscal Year 2004

Sources of Revenue	Amount
Net Student Tuition and Fees	\$97,471,000
Sales and Services of Auxiliary Enterprises	\$68,609,000
Private Gifts, Grants, and Contracts	\$21,287,000
Dividends, Interest, and Rents	\$9,822,000
Federal Grants and Contracts	\$5,096,000
Organized Activities Relating to Educational Departments	\$3,858,000
Other	\$1,235,000
State Grants and Contracts	\$1,320,000
Interest on Short-term Investments and Other Income	\$534,000
Net Realized and Unrealized Appreciation on Investments	\$54,428,000
<b>Total</b>	<b>\$263,660,000</b>

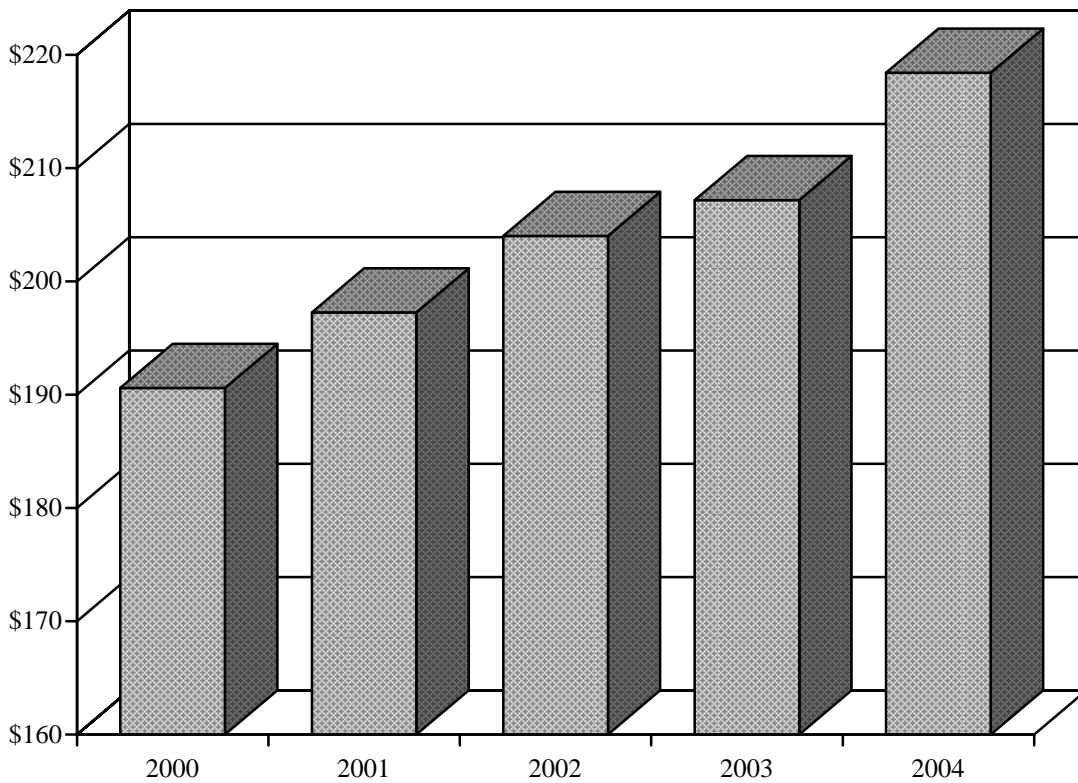
Reynolda Campus Revenues (x \$1,000,000) 2000-2004



## Expenditures - Reynolda Campus, Fiscal Year 2004

Expenditures and Transfers	Amount
Instruction, Departmental Research, and Clinical	\$94,679,000
Auxiliary Enterprises	\$55,673,000
Institutional Support	\$32,096,000
Libraries	\$10,019,000
Student Services	\$11,088,000
Academic Support	\$6,371,000
Organized Activities	\$1,996,000
Other	\$6,505,000
<b>Total</b>	<b>\$218,427,000</b>

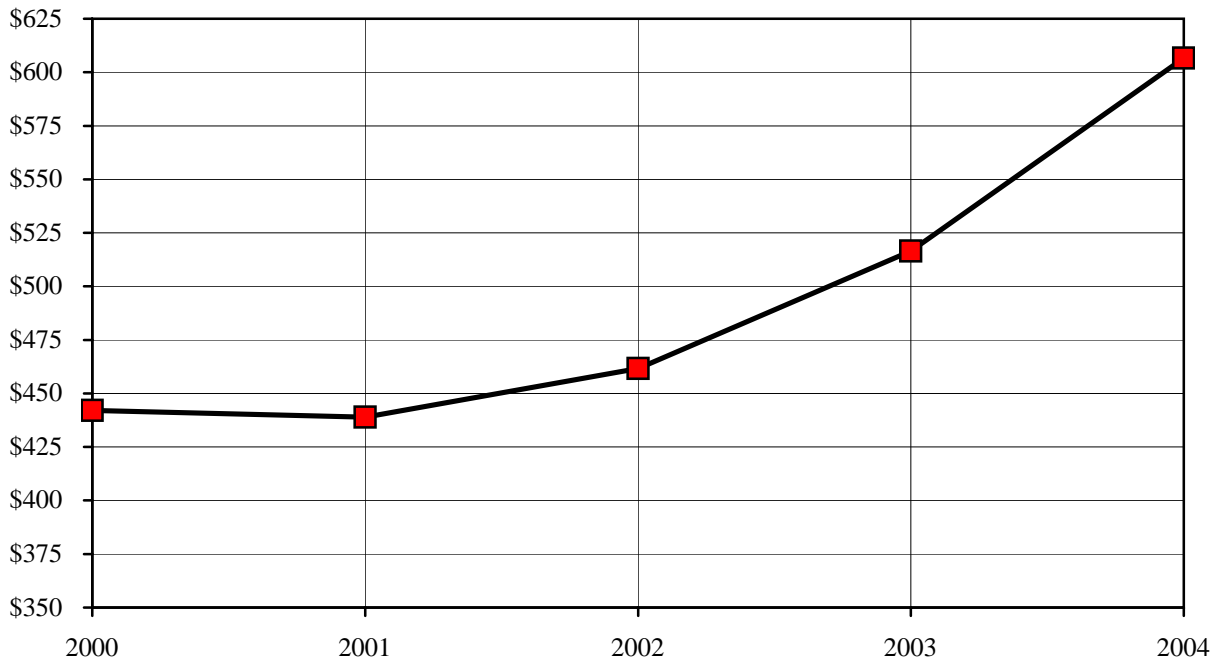
Reynolda Campus Expenditures (x \$1,000,000) 2000-2004



## Sources of Revenue - Bowman Gray Campus, Fiscal Year 2000-2004

Sources of Revenue	Amount
Clinical Services	\$312,915,000
Federal Grants and Contracts	\$121,751,000
Private Gifts, Grants, and Contracts	\$43,200,000
Other	\$51,252,000
Net Student Tuition and Fees	\$14,569,000
Dividends, Interest, and Rents	\$9,311,000
State Grants and Contracts	\$10,314,000
Sales and Services of Auxiliary Enterprises	\$998,000
Interest on Short-term Investments and Other Income	\$3,044,000
Net Realized and Unrealized Appreciation on Investments	(\$39,277,000)
<b>Total</b>	<b>\$567,354,000</b>

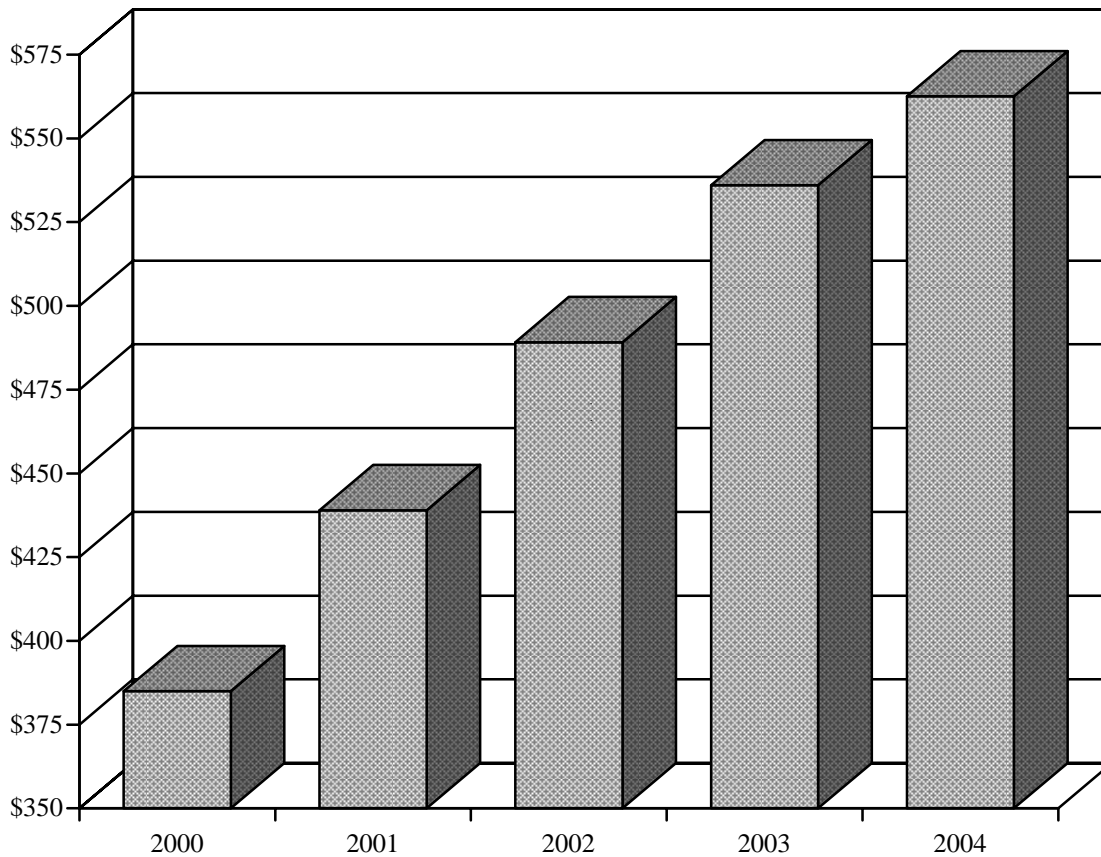
**Bowman Gray Campus Revenues (x \$1,000,000) 2000-2004**



## Expenditures - Bowman Gray Campus, Fiscal Year 2004

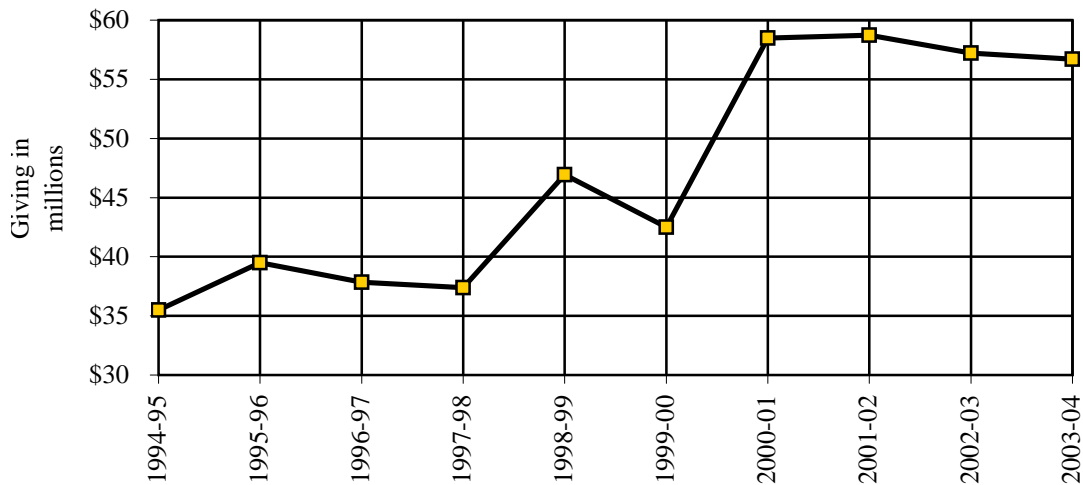
Expenditures and Transfers	Amount
Instruction, Departmental Research, and Clinical	\$377,553,000
Sponsored Research, Training, and Other Programs	\$142,103,000
Institutional Support	\$34,676,000
Academic Support	\$7,521,000
Libraries	\$3,975,000
Auxiliary Enterprises	\$999,000
Student Services	\$2,019,000
Other	(\$6,306,000)
<b>Total</b>	<b>\$562,540,000</b>

**Bowman Gray Campus Expenditures (x \$1,000,000) 2000-2004**

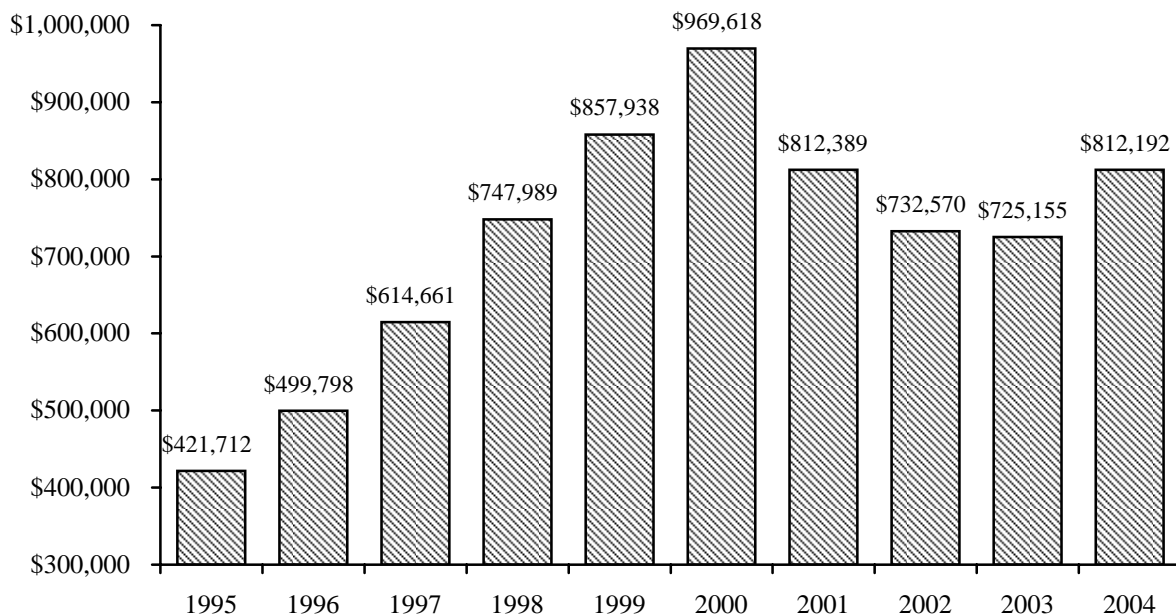


## Summary of Total Giving to Wake Forest University, 1995-2004

Year	Reynolda Campus	Bowman Gray Campus	Total
1994-95	\$17,261,873	\$18,218,683	<b>\$32,895,288</b>
1995-96	\$25,259,279	\$14,248,508	<b>\$39,507,787</b>
1996-97	\$17,454,882	\$20,381,895	<b>\$39,507,787</b>
1997-98	\$22,201,636	\$15,180,763	<b>\$37,836,777</b>
1998-99	\$27,714,025	\$19,224,287	<b>\$46,938,312</b>
1999-00	\$25,868,336	\$16,633,467	<b>\$42,501,803</b>
2000-01	\$40,170,743	\$18,317,274	<b>\$58,488,017</b>
2001-02	\$35,032,045	\$23,705,634	<b>\$58,737,679</b>
2002-03	\$33,615,108	\$23,596,556	<b>\$57,211,664</b>
2003-04	\$32,489,427	\$24,211,144	<b>\$56,700,571</b>

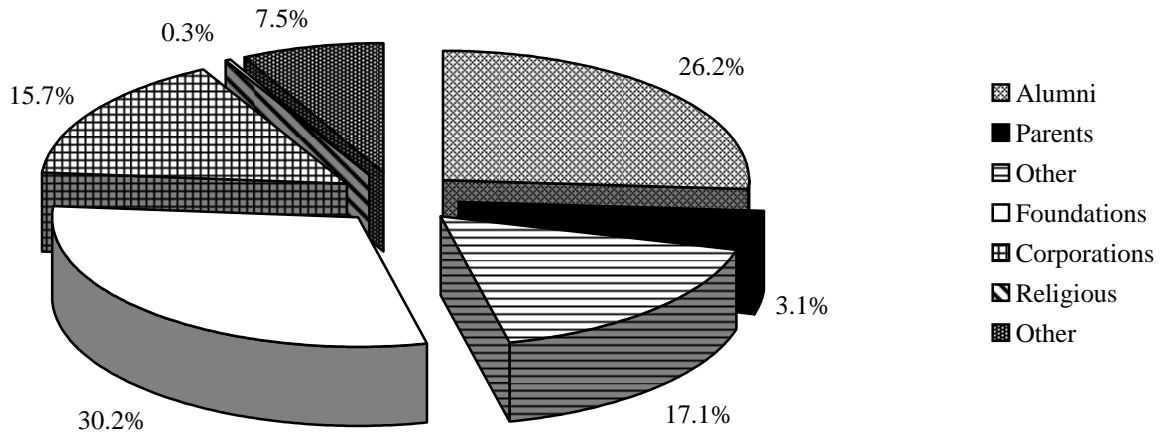


## Market Value of Endowment Funds (x \$1000)



## Charitable Contributions by Category

### Fiscal Year 2003-04



	Fiscal Year 2003-04	% Total
<b>Individuals</b>		
Alumni	\$14,864,581	26.2%
Parents	\$1,733,951	3.1%
Other	\$9,678,862	17.1%
<b>Organizations</b>		
Foundations	\$17,097,421	30.2%
Corporations	\$8,916,747	15.7%
Religious	\$181,772	0.3%
Other	\$4,227,237	7.5%
<b>Total</b>	<b>\$56,700,571</b>	<b>100%</b>

### Alumni Giving Percentage 2000-2004

