

Full-time Faculty^ by Ethnicity - Wake Forest University, Fall 2004

	Black		Amer. Indian		Asian		Hispanic		White		Other/ Unknown		Total
	#	%	#	%	#	%	#	%	#	%	#	%	
Arts and Sciences*	15	4.2%	0	0.0%	14	4.0%	17	4.8%	308	87.0%	0	0.0%	354
Divinity School	0	0.0%	0	0.0%	0	0.0%	0	0.0%	5	100.0%	0	0.0%	5
Law School	4	10.8%	0	0.0%	0	0.0%	0	0.0%	33	89.2%	0	0.0%	37
Babcock MBA	1	2.9%	0	0.0%	3	8.6%	0	0.0%	31	88.6%	0	0.0%	35
Medical School**	19	2.2%	0	0.0%	74	8.7%	19	2.2%	732	86.4%	3	0.4%	847
Total	39	3.1%	0	0.0%	91	7.1%	36	2.8%	1,109	86.8%	3	3.1%	1,278

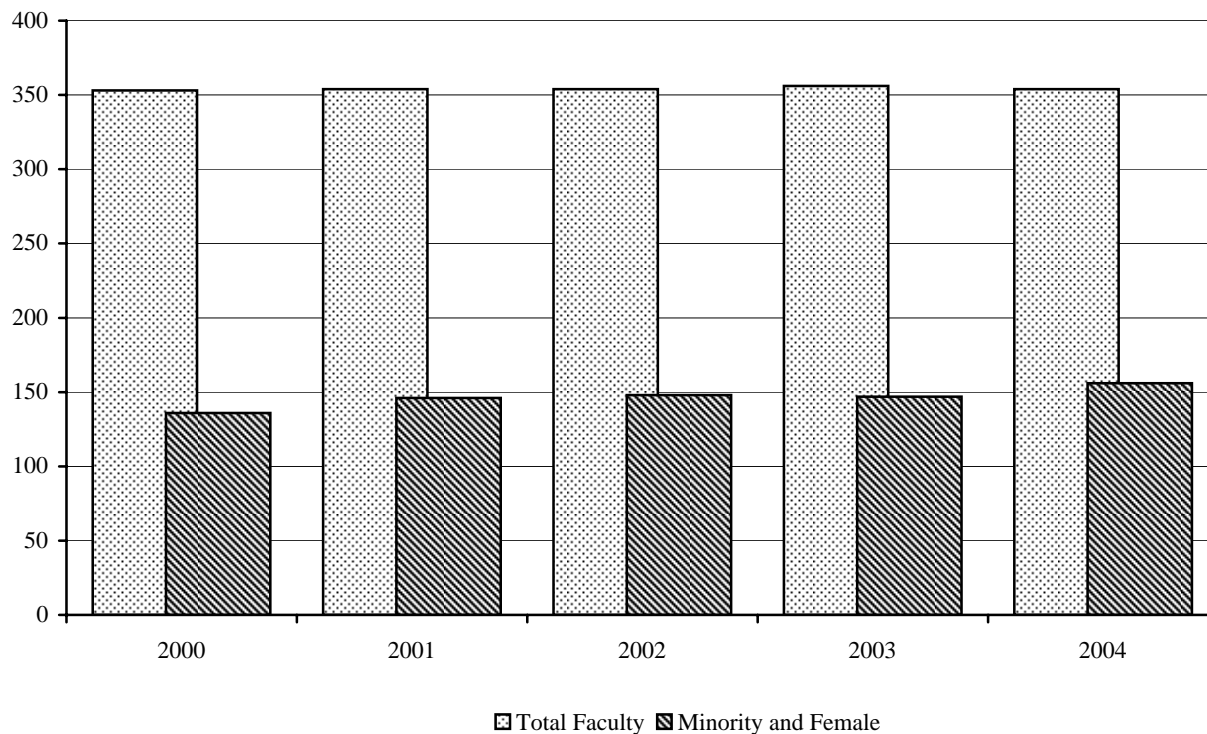
^"Full-time Instructional Faculty" as defined by the AAUP Faculty Compensation Survey (excludes medical school faculty)

* Includes the Calloway School of Business and Accountancy

** Includes administrative faculty

Percentage of Full-time Minority and Female Faculty^, Arts and Sciences*, Fall 2000-2004

Fall	Total Faculty	Number of Minority	% Minority	Number of Female	% Female	Total Percentage of Minority and Female
2000	353	43	12.2%	124(19 minority)	35%	42%
2001	354	41	11.6%	125(19 minority)	35%	42%
2002	354	44	12.4%	128(19 minority)	36%	43%
2003	356	47	13.2%	128(17 minority)	36%	44%
2004	354	46	13.0%	128(18 minority)	36%	44%



^"Full-time Instructional Faculty" as defined by the AAUP Faculty Compensation Survey

* Includes the Calloway School of Business and Accountancy