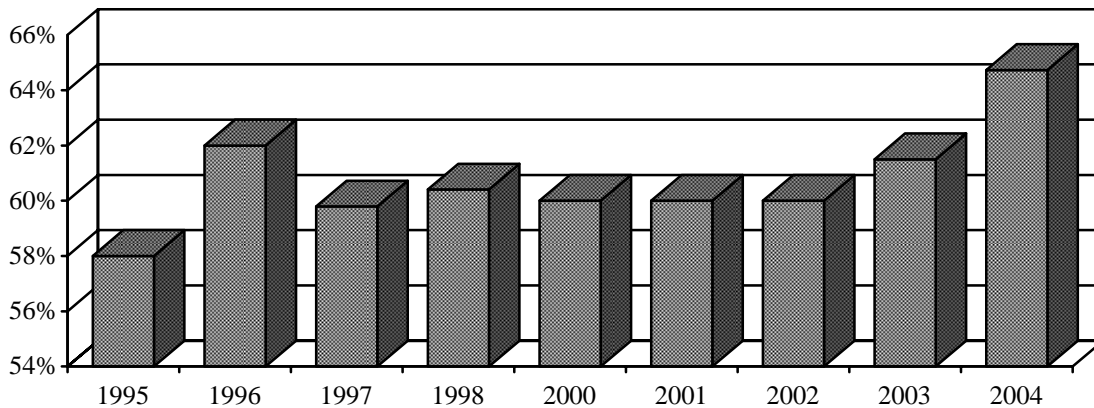


Tenure of Full-time Instructional Faculty^ - Reynolda Campus, Fall 2004

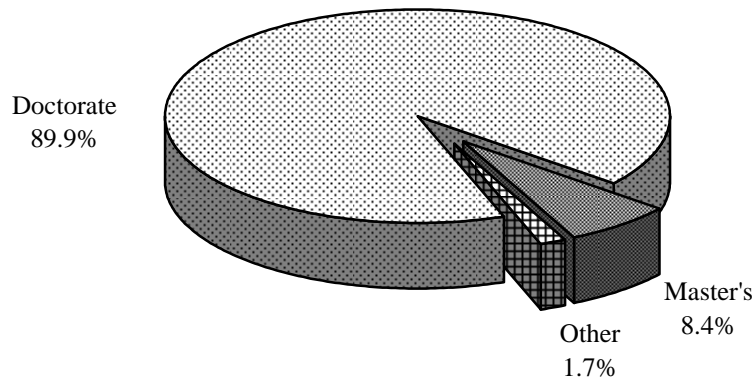
Rank	Tenured		Tenure Track		Non-Tenure Track		Total		% Tenured	
	Male	Female	Male	Female	Male	Female	Male	Female	Male	Female
Professor	128	36	1	0	4	1	133	37	96%	97%
Associate	74	40	4	0	1	0	79	40	94%	100%
Assistant	0	0	39	36	10	12	49	48	0%	0%
Instructor	0	0	1	1	10	9	11	10	0%	0%
Lecturer	1	0	0	0	6	6	7	6	14%	0%
Other rank	0	0	0	0	4	7	4	7	0%	0%
Total	203	76	45	37	35	35	283	148	72%	51%

Percentage of Full-time Instructional Faculty^ Tenured - Reynolda Campus, Fall 1995-2004



Highest Degree Earned for Full-Time Instructional Faculty^*, Fall 2004

Degree	Male		Female		Total Faculty	
	#	%	#	%	#	%
Doctorate	212	93.8%	112	87.5%	324	91.5%
Master's	11	4.9%	13	10.2%	24	6.8%
Other	3	1.3%	3	2.3%	6	1.7%
Total	226		128		354	100%



^"Full-time Instructional Faculty" as defined by the AAUP Faculty Compensation Survey

*Arts and Sciences and the Calloway School of Business and Accountancy