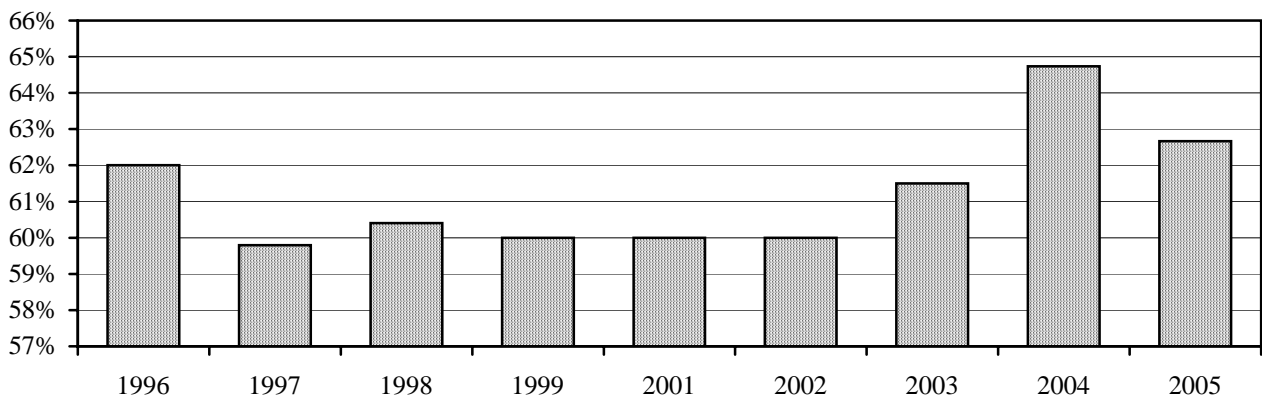


Tenure of Full-time Instructional Faculty^ - Reynolda Campus, Fall 2005

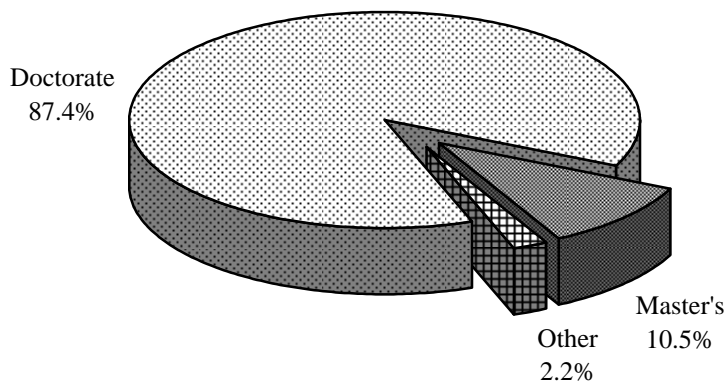
Rank	Tenured		Tenure Track		Non-Tenure Track		Total		% Tenured	
	Male	Female	Male	Female	Male	Female	Male	Female	Male	Female
Professor	127	38	1	0	5	1	133	39	95%	97%
Associate	76	40	6	1	1	1	83	42	92%	95%
Assistant	0	0	37	33	16	15	53	48	0%	0%
Instructor	0	0	1	0	12	11	13	11	0%	0%
Lecturer	1	0	0	0	9	6	10	6	10%	0%
Other rank	0	0	0	0	5	7	5	7	0%	0%
Total	204	78	45	34	48	41	297	153	69%	51%

Percentage of Full-time Instructional Faculty^ Tenured - Reynolda Campus, Fall 1996-2005



Highest Degree Earned for Full-Time Instructional Faculty^*, Fall 2005

Degree	Male		Female		Total Faculty	
	#	%	#	%	#	%
Doctorate	215	88.8%	110	84.6%	325	87.4%
Master's	23	9.5%	16	12.3%	39	10.5%
Other	4	1.7%	4	3.1%	8	2.2%
Total	242		130		372	100%



^"Full-time Instructional Faculty" as defined by the AAUP Faculty Compensation Survey

*Arts and Sciences and the Calloway School of Business and Accountancy