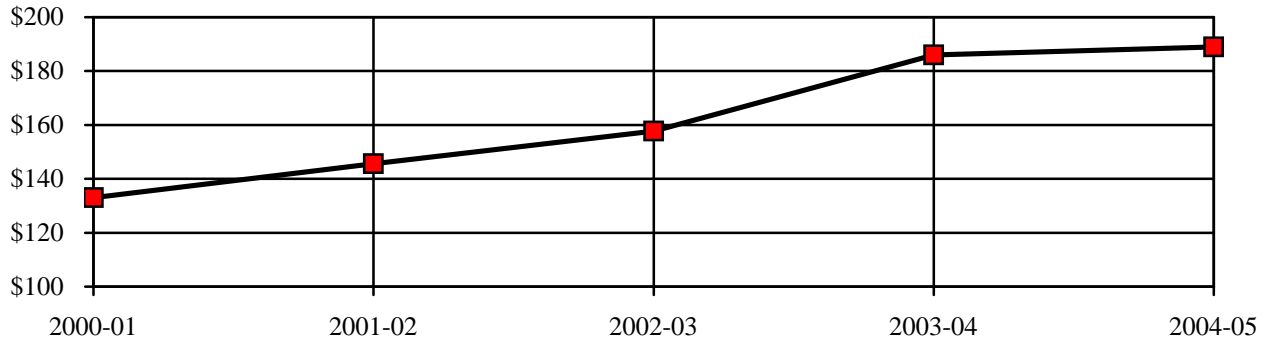


Research Grants by Fund Source, Bowman Gray Campus, 2001-2005

Fund Source	2000-01	2001-02	2002-03	2003-04	2004-05
Federal	\$73,437,005	\$114,840,282	\$122,966,458	\$146,954,320	\$152,276,049
State	\$7,357,337	\$3,194,199	\$3,239,256	\$3,564,605	\$9,911,486
Industry	\$13,573,733	\$15,781,030	\$16,051,813	\$21,450,760	\$16,801,781
Other	\$11,625,438	\$11,771,880	\$15,474,943	\$14,074,117	\$9,933,502
Total	\$105,993,513	\$145,587,391	\$157,732,470	\$186,043,802	\$188,922,818

Total Research Grants Received (x 1,000,000)*

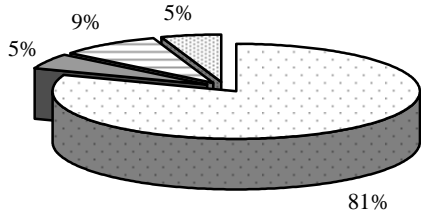


*The Bowman Gray Campus changed the reporting structure of research grant data in 2001-02. The data now includes both direct and indirect costs. The total for 2000-01 would be \$132,787,300 if reported the same way.

Research Grants by Discipline

Anesthesiology (30)	\$3,212,143
Biochemistry (38)	\$7,823,386
Cancer Biology (40)	\$5,917,801
Carpenter Library (1)	\$39,995
Dermatology (54)	\$1,916,036
Family & Community Medicine (20)	\$3,047,910
Internal Medicine (262)	\$35,176,238
Medical Education (1)	\$49,775
Microbiology/Immunology (27)	\$5,665,859
Neurobiology & Anatomy (30)	\$7,362,874
Neurology (41)	\$5,807,086
Obstetrics & Gynecology (21)	\$2,896,548
Pathology (44)	\$9,543,808
Pediatrics (60)	\$14,960,165
Physiology/Pharmacology (92)	\$17,498,279
Psychiatry (21)	\$3,797,166
Public Health Services (91)	\$44,606,251
Radiation Oncology (12)	\$1,960,605
Radiological Sciences (18)	\$4,700,509
Regenerative Medicine (6)	\$523,687
Surgical Sciences (107)	\$8,333,578
Institutional (4)	\$4,083,120
Total (1020)	\$188,922,818

Research Grants 2004-05



□ Federal ■ State □ Industry ■ Other