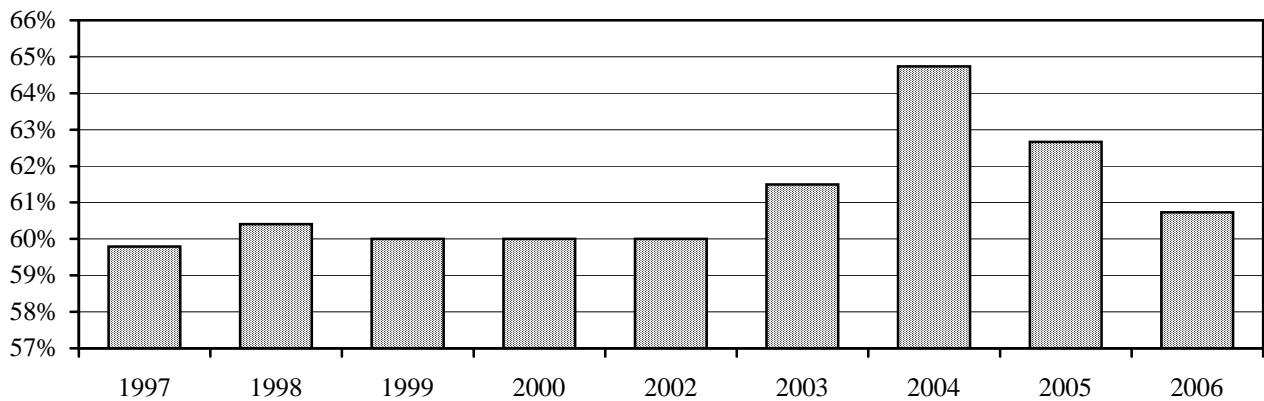


Tenure of Full-time Instructional Faculty^ - Reynolda Campus, Fall 2006

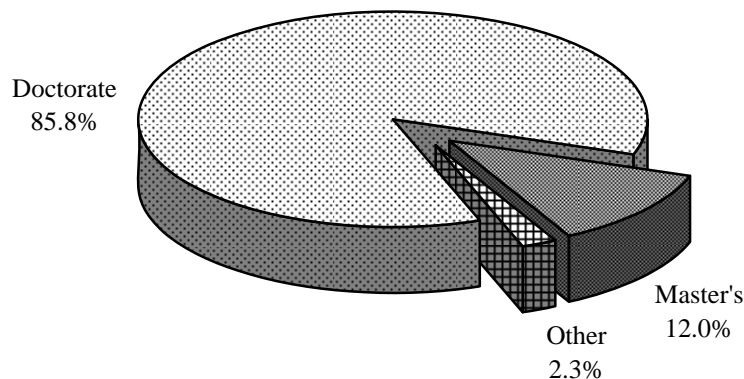
Rank	Tenured		Tenure Track		Non-Tenure Track		Total		% Tenured	
	Male	Female	Male	Female	Male	Female	Male	Female	Male	Female
Professor	128	35	0	0	3	0	131	35	98%	100%
Associate	75	44	3	3	0	2	78	49	96%	90%
Assistant	0	0	35	32	19	15	54	47	0%	0%
Instructor	0	0	2	1	13	25	15	26	0%	0%
Lecturer	1	0	0	0	12	7	13	7	8%	0%
Other rank	0	0	0	0	4	7	4	7	0%	0%
Total	204	79	40	36	51	56	295	171	69%	46%

Percentage of Full-time Instructional Faculty^ Tenured - Reynolda Campus, Fall 1997-2006



Highest Degree Earned for Full-Time Instructional Faculty^*, Fall 2006

Degree	Male		Female		Total Faculty	
	#	%	#	%	#	%
Doctorate	218	89.3%	119	79.9%	337	85.8%
Master's	22	9.0%	25	16.8%	47	12.0%
Other	4	1.6%	5	3.4%	9	2.3%
Total	244	100%	149	100%	393	100%



^"Full-time Instructional Faculty" as defined by the AAUP Faculty Compensation Survey

*Arts and Sciences and the Calloway School of Business and Accountancy