

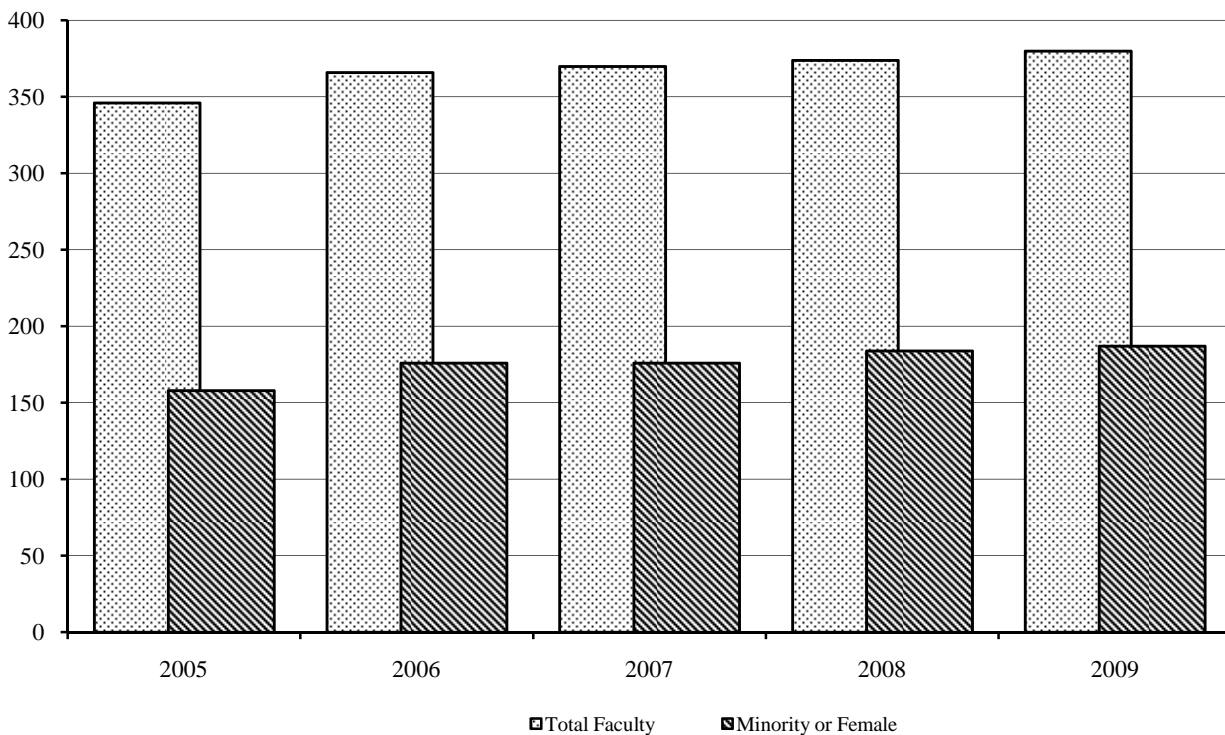
Full-time Faculty* by Ethnicity - Wake Forest University, Fall 2009

	Black		Amer. Indian		Asian		Hispanic		White		Other		Total
	#	%	#	%	#	%	#	%	#	%	#	%	
Arts and Sciences	14	3.7%	0	0.0%	19	5.0%	16	4.2%	321	84.5%	10	2.6%	380
Divinity School	1	16.7%	0	0.0%	0	0.0%	0	0.0%	4	66.7%	1	16.7%	6
Law School	6	18.2%	0	0.0%	0	0.0%	0	0.0%	27	81.8%	0	0.0%	33
Schools of Business	1	1.8%	1	1.8%	4	7.0%	2	3.5%	48	84.2%	1	1.8%	57
Medical School	25	2.8%	5	0.6%	107	11.8%	19	2.1%	744	82.0%	7	0.8%	907
Total	47	3.4%	6	0.4%	130	9.4%	37	2.7%	1,144	82.7%	19	3.1%	1,383

*"Full-time Instructional Faculty" as defined by the AAUP Faculty Compensation Survey (excludes medical school faculty)

Percentage of Full-time Minority and Female Faculty†, Arts and Sciences, Fall 2005-2009

Fall	Total Faculty	Number of Minority	% Minority	Number of Female	% Female	Total Percentage of Minority or Female
2005	346	39	11.3%	124(14 minority)	35%	42%
2006	366	44	12.0%	143(20 minority)	38%	45%
2007	370	47	12.7%	144(23 minority)	38%	44%
2008	374	51	13.6%	150(28 minority)	39%	46%
2009	380	59	15.5%	159(31 minority)	42%	49%



†"Full-time Instructional Faculty" as defined by the AAUP Faculty Compensation Survey