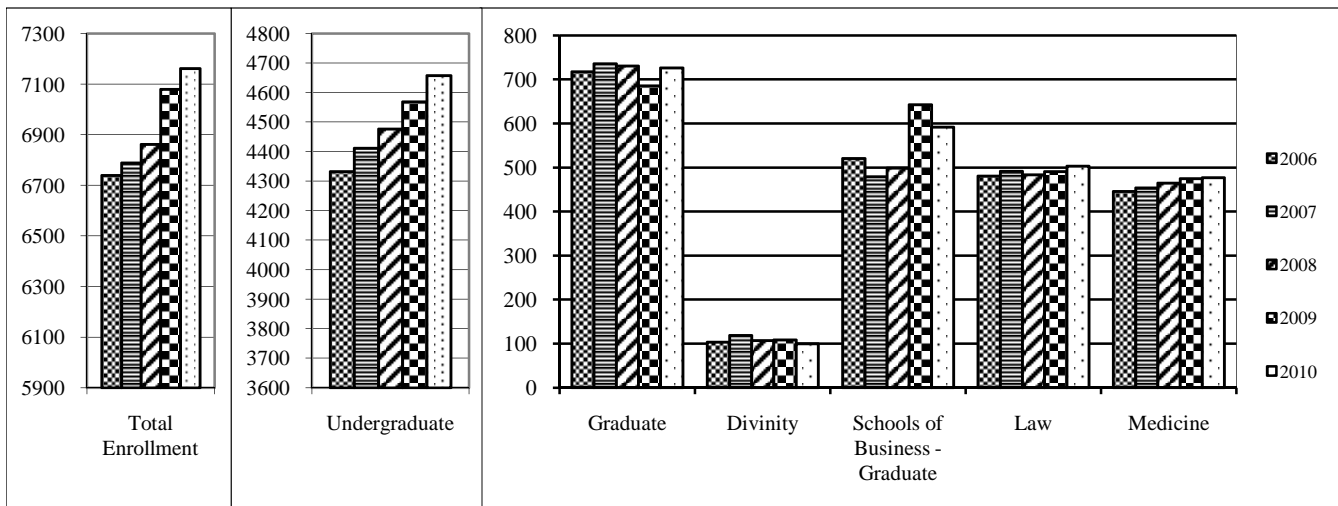


Enrollment by School, Fall 2006-2010



Enrollment by Class and by School, Fall 2010

	Male	Female	Total	FTE*
Freshmen [†]	598	653	1,251	1248.75
Sophomores	589	623	1,212	1209.00
Juniors	568	598	1,166	1165.25
Seniors	493	520	1,013	992.00
Unclassified	5	10	15	7.00
Total Undergraduates	2,253	2,404	4,657	4622.00
<i>Study Abroad</i>	<i>113</i>	<i>231</i>	<i>344</i>	<i>344.00</i>
<i>Reynolda Campus</i>	<i>2,140</i>	<i>2,173</i>	<i>4,313</i>	<i>4278.00</i>
Graduate - Arts & Sciences	210	234	444	413.75
Graduate - Medicine	123	159	282	276.00
Divinity	59	41	100	98.00
Schools of Business-Graduate	403	189	592	590.00
Law School	296	207	503	502.75
Medical School	261	216	477	477.00
Physician Assistant	23	84	107	107.00
University Total	3,628	3,534	7,162	7086.50

*Full-time equivalent

Source: IPEDS-Fall Enrollment 2010

[†]Includes all first-time, first-year students, even those with advanced standing

