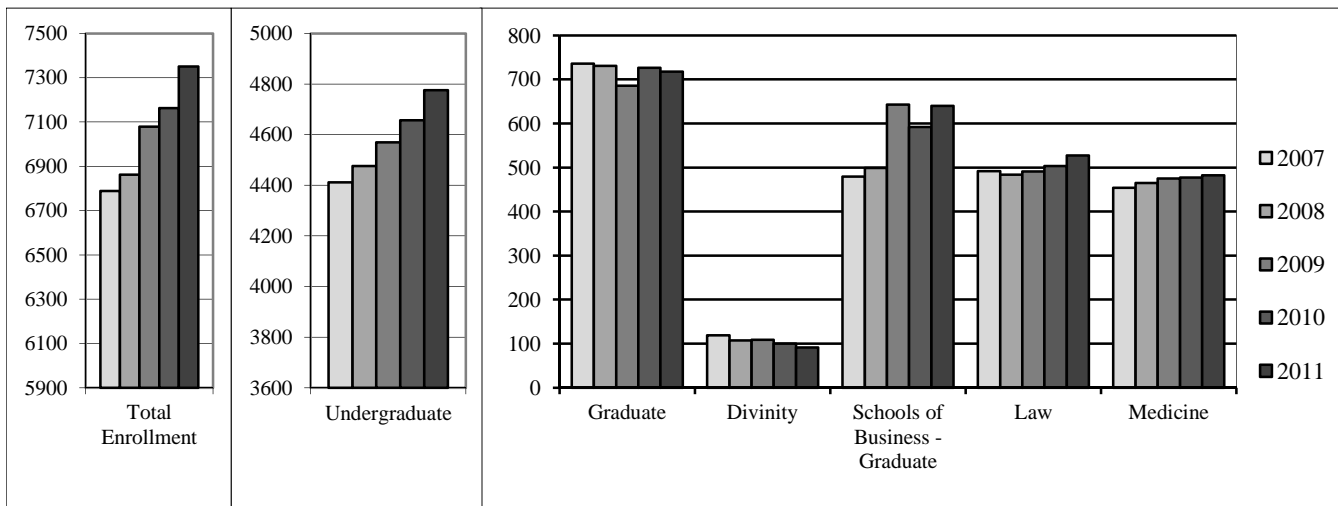


Enrollment by School, Fall 2007-2011



Enrollment by Class and by School, Fall 2011

	Male	Female	Total	FTE*
Freshmen [†]	596	680	1,276	1274.50
Sophomores	576	627	1,203	1200.25
Juniors	597	597	1,194	1192.00
Seniors	522	573	1,095	1077.00
Unclassified	3	4	7	2.50
Total Undergraduates	2,294	2,481	4,775	4746.25
<i>Study Abroad</i>	<i>104</i>	<i>214</i>	<i>318</i>	<i>318.00</i>
<i>Reynolda Campus</i>	<i>2,190</i>	<i>2,267</i>	<i>4,457</i>	<i>4428.25</i>
Graduate - Arts & Sciences	203	231	434	405.25
Graduate - Medicine	128	156	284	282.00
Divinity	45	47	92	91.00
Schools of Business - Graduate	420	220	640	639.00
Law School	306	221	527	525.50
Medical School	264	218	482	482.00
Physician Assistant	26	91	117	117.00
University Total	3,686	3,665	7,351	7288.00

*Full-time equivalent

Source: IPEDS-Fall Enrollment 2011

[†]Includes all first-time, first-year students, even those with advanced standing

