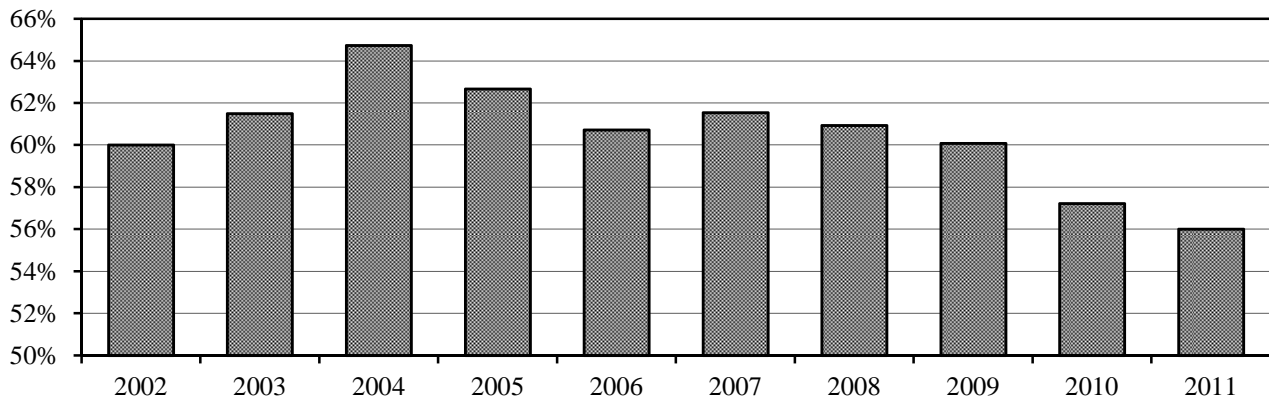


Tenure of Full-time Instructional Faculty* - Reynolda Campus, Fall 2011

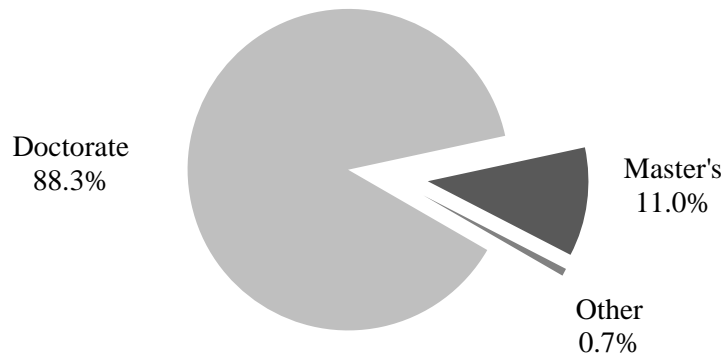
Rank	Tenured		Tenure Track		Non-Tenure Track		Total		% Tenured	
	Male	Female	Male	Female	Male	Female	Male	Female	Male	Female
Professor	122	48	0	0	1	0	123	48	99%	100%
Associate	71	48	2	1	0	0	73	49	97%	98%
Assistant	0	0	44	44	1	0	45	44	0%	0%
Lecturer	0	0	1	0	1	1	2	1	0%	0%
Other rank	0	0	0	0	67	64	67	64	0%	0%
Total	193	96	47	45	70	65	310	206	62%	47%

Percentage of Full-time Instructional Faculty* Tenured - Reynolda Campus, Fall 2002-2011



Highest Degree Earned for Full-Time Instructional Faculty*†, Fall 2011

Degree	Male		Female		Total Faculty	
	#	%	#	%	#	%
Doctorate	206	90.4%	148	85.5%	354	88.3%
Master's	21	9.2%	23	13.3%	44	11.0%
Other	1	0.4%	2	1.2%	3	0.7%
Total	228	100%	173	100%	401	100%



*"Full-time Instructional Faculty" as defined by the AAUP Faculty Compensation Survey

† Arts and Sciences