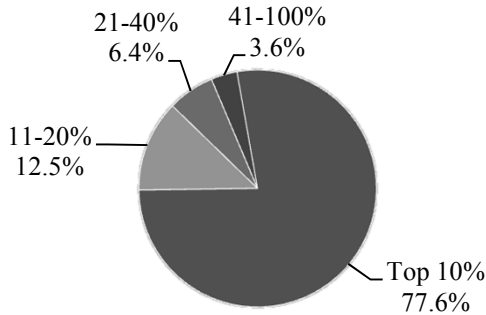


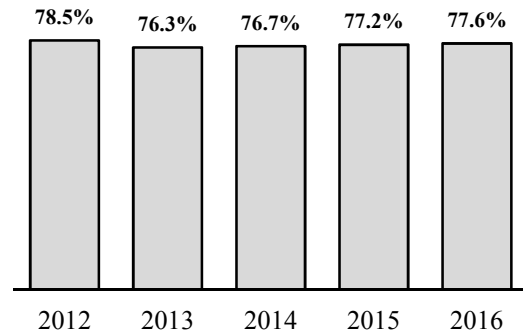
High School Rank of Entering Freshmen, 2012-2016

| Rank | 2012 | | 2013 | | 2014 | | 2015 | | 2016 | |
|---------------|--------------|-------|--------------|-------|--------------|-------|--------------|-------|--------------|-------|
| | # | % | # | % | # | % | # | % | # | % |
| Top 10% | 471 | 78.5% | 405 | 76.3% | 329 | 76.7% | 331 | 77.2% | 304 | 77.6% |
| 11-20% | 75 | 12.5% | 78 | 14.7% | 56 | 13.1% | 57 | 13.3% | 49 | 12.5% |
| 21-40% | 34 | 5.7% | 39 | 7.3% | 28 | 6.5% | 26 | 6.1% | 25 | 6.4% |
| 41-60% | 18 | 3.0% | 5 | 0.9% | 14 | 3.3% | 10 | 2.3% | 10 | 2.6% |
| 61-80% | 2 | 0.3% | 3 | 0.6% | 2 | 0.5% | 3 | 0.7% | 3 | 0.8% |
| 81-100% | 0 | 0.0% | 1 | 0.2% | 0 | 0.0% | 2 | 0.5% | 1 | 0.3% |
| Not Available | 634 | | 699 | | 858 | | 855 | | 914 | |
| Total | 1,234 | | 1,230 | | 1,287 | | 1,284 | | 1,306 | |

Freshmen HS Rank, Fall 2016

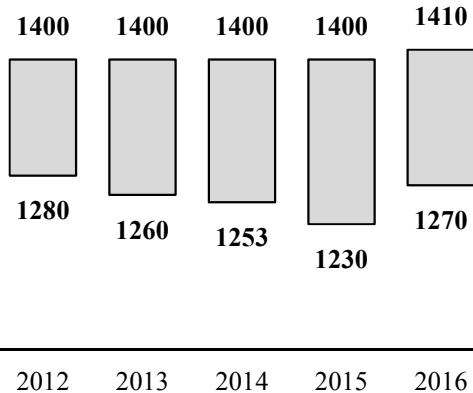


Top 10%

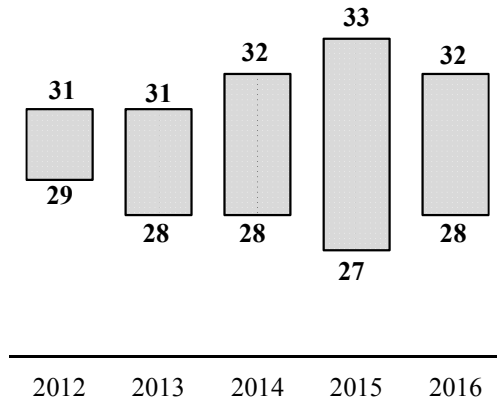


Middle 50% of ACT and SAT Scores for Entering Freshmen, 2012-2016

SAT for First Time Freshmen
(Enrolled)
25th/75th Percentile



ACT for First Time Freshmen
(Enrolled)
25th/75th Percentile



Note: SAT data above are based on each student's "best combined score" of Math and Verbal/Reading sections.